

## General Information

Location: Belgrade Scg  
IATA Code: BJY  
Lat/Long: N44° 56.5' E020° 15.0'  
Elevation: 281 ft

Airport Use: Military  
Magnetic Variation: 4.2°E

Fuel Types: 100-130 Octane  
Customs: Yes  
Airport Type: IFR  
Landing Fee: Yes  
Control Tower: Yes  
Jet Start Unit: No  
LLWS Alert: No  
Beacon: No

Sunrise: 0334 Z  
Sunset: 1739 Z,

## Runway Information

Runway: 12L  
Length x Width: 8209 ft x 148 ft  
Surface Type: asphalt  
TDZ-Elev: 268 ft  
Lighting: Edge, ALS

Runway: 12R  
Length x Width: 7999 ft x 148 ft  
Surface Type: asphalt  
TDZ-Elev: 267 ft

Runway: 30L  
Length x Width: 7999 ft x 148 ft  
Surface Type: asphalt  
TDZ-Elev: 280 ft

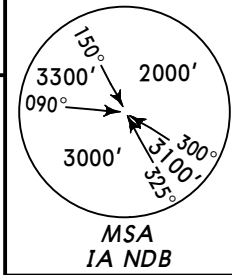
Runway: 30R  
Length x Width: 8209 ft x 148 ft  
Surface Type: asphalt  
TDZ-Elev: 281 ft  
Lighting: Edge

## Communication Information

Batajnica Tower 118.2 VHF-DF

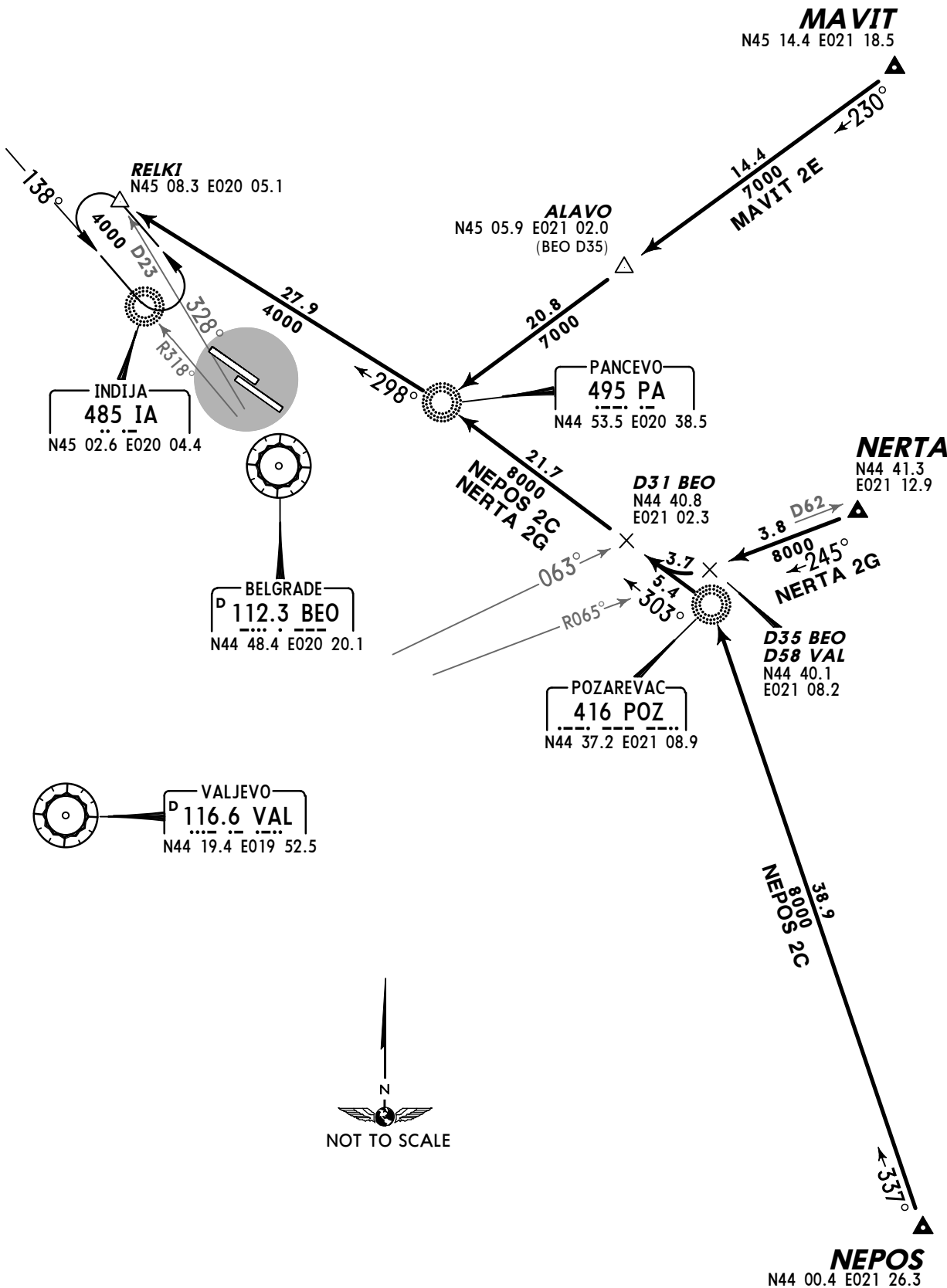
Batajnica Approach Control 126.05 VHF-DF

Apt Elev 281'  
Alt Set: hPa  
Trans level: By ATC Trans alt: 10000'



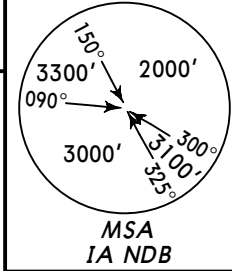
MAVIT 2E [MAVI2E]  
NEPOS 2C [NEPO2C]  
NERTA 2G [NERT2G]  
RWY 12L ARRIVALS

**SPEED** MAX 250 KT BELOW 10000'



Apt Elev  
281'

Alt Set: hPa  
Trans level: By ATC Trans alt: 10000'



TADAM 1D [TADA1D]  
TISAK 2F [TISA2F]  
VAL 2T, VAL 2U  
RWY 12L ARRIVALS  
**SPEED MAX 250 KT BELOW 10000'**

**TADAM**  
N45 14.8 E019 32.8

**TISAK**  
N45 25.3 E020 13.6

MITROVICA  
D 117.0 SMI  
N45 00.6 E019 25.8

LANEN  
N45 05.2  
E019 57.5  
(BEO D23)  
(115° brg to IA)

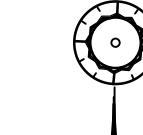
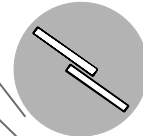
D26 BEO  
N45 13.1 E020 08.7

BEDEM  
N45 02.3  
E019 48.5  
(SMI D16)

INDIJA  
485 IA  
N45 02.6 E020 04.4

D3.4 SMI  
D42 VAL  
N44 57.5  
E019 27.9

ODANI  
N45 03.3  
E020 01.4  
(SMI D25)



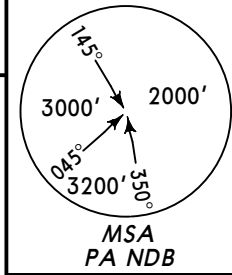
BELGRADE  
D 112.3 BEO  
N44 48.4 E020 20.1

VALJEVO  
D 116.6 VAL  
N44 19.4 E019 52.5  
390 VAL  
N44 19.3 019 52.5



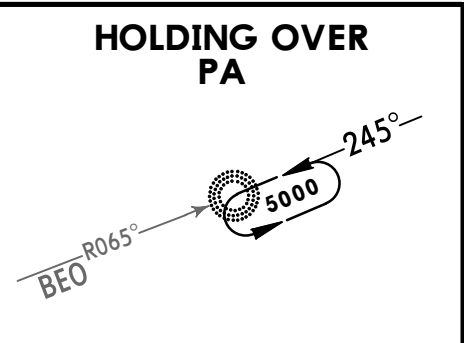
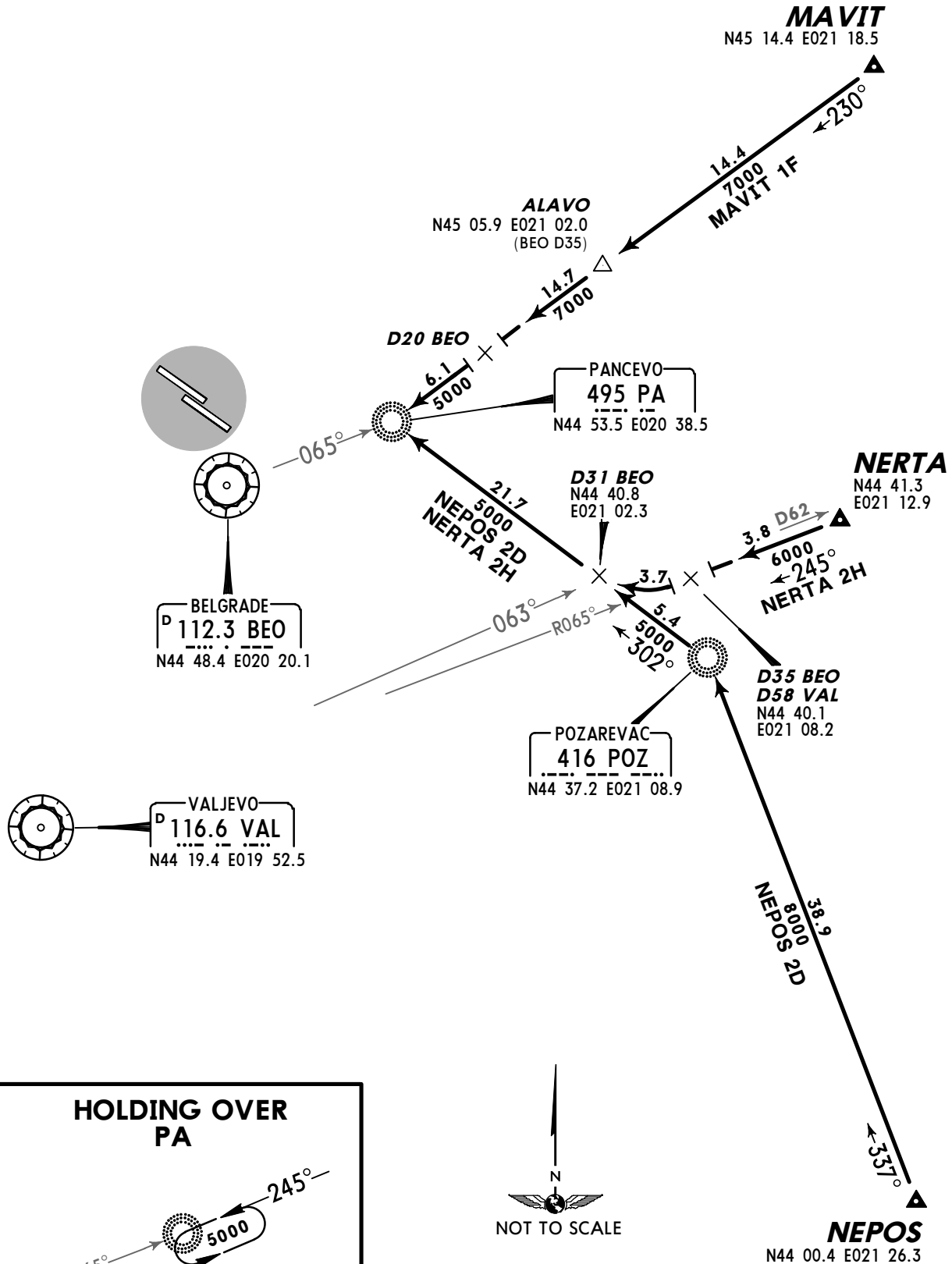
Apt Elev  
281'

Alt Set: hPa  
Trans level: By ATC Trans alt: 10000'



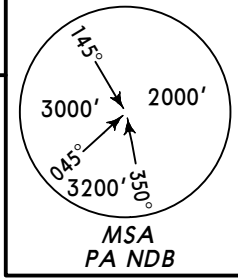
MAVIT 1F [MAV11F]  
NEPOS 2D [NEPO2D]  
NERTA 2H [NERT2H]  
RWY 30R ARRIVALS

**SPEED** MAX 250 KT BELOW 10000'

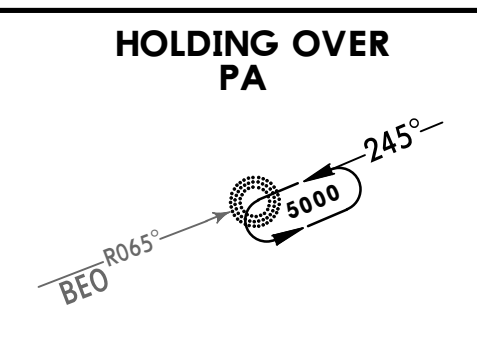
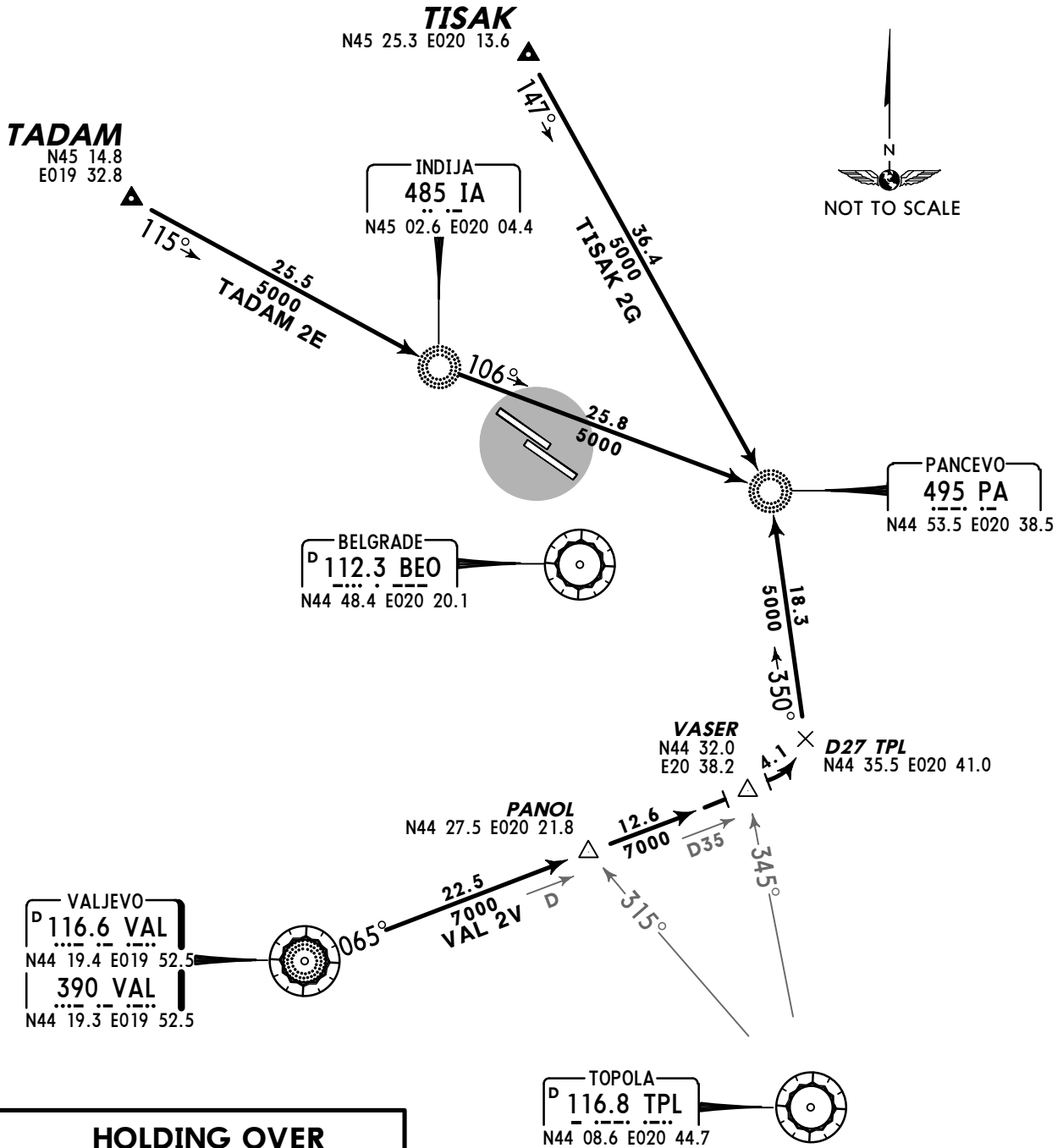


Apt Elev  
281'

Alt Set: hPa  
Trans level: By ATC Trans alt: 10000'

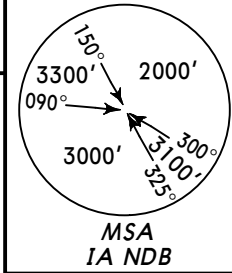


TADAM 2E [TADA2E]  
TISAK 2G [TISA2G]  
VAL 2V  
RWY 30R ARRIVALS  
**~~SPEED~~ MAX 250 KT BELOW 10000'**



Apt Elev  
281'

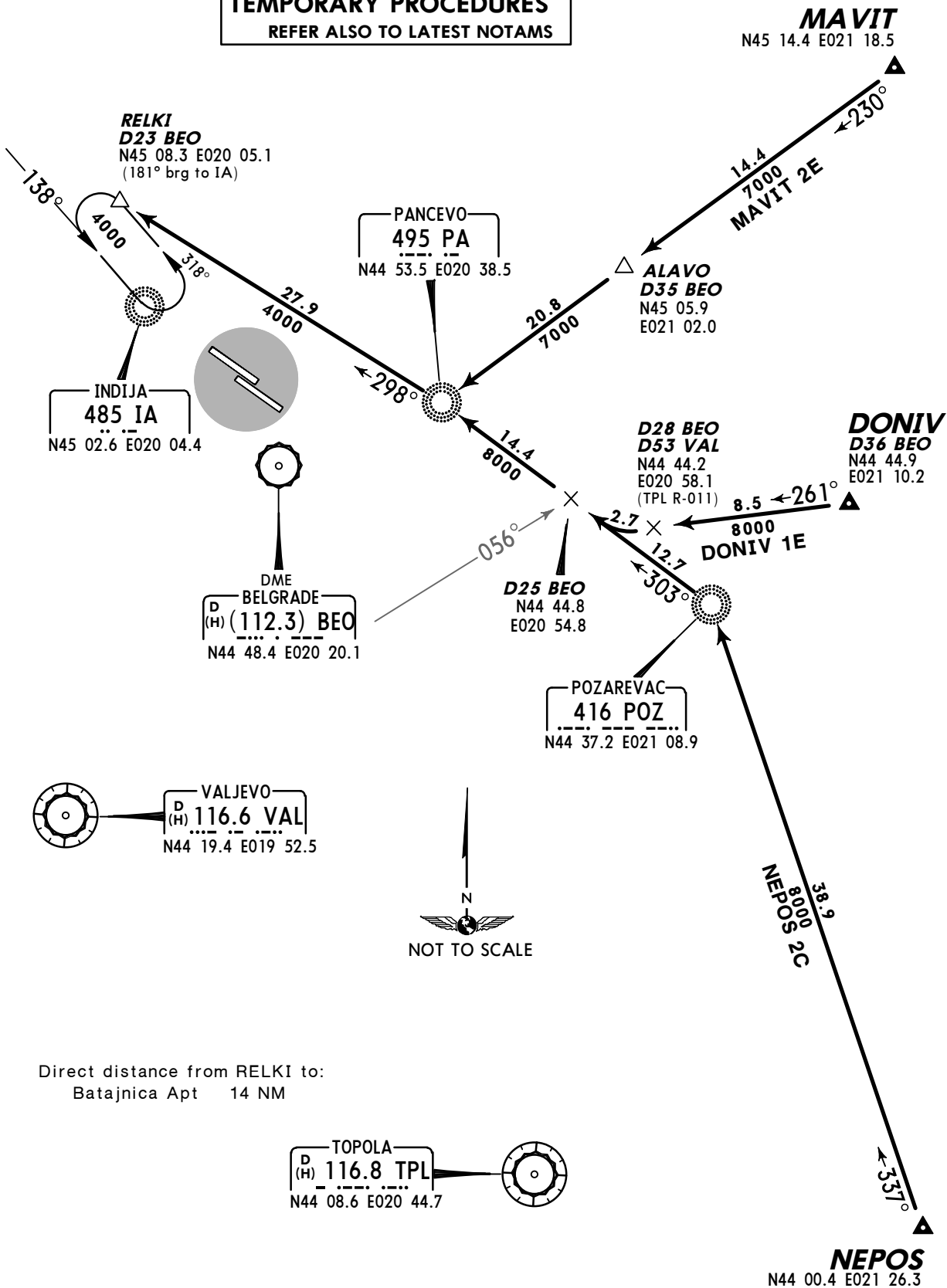
Alt Set: hPa  
Trans level: By ATC Trans alt: 10000'



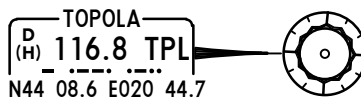
DONIV 1E [DONI1E]  
MAVIT 2E [MAVI2E]  
NEPOS 2C [NEPO2C]  
RWY 12L ARRIVALS

**SPEED** MAX 250 KT BELOW 10000'

**TEMPORARY PROCEDURES**  
REFER ALSO TO LATEST NOTAMS

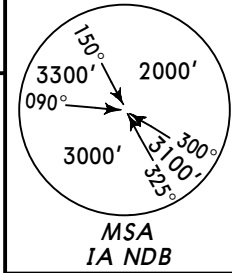


Direct distance from RELKI to:  
Batajnica Apt 14 NM



Apt Elev  
281'

Alt Set: hPa  
Trans level: By ATC Trans alt: 10000'

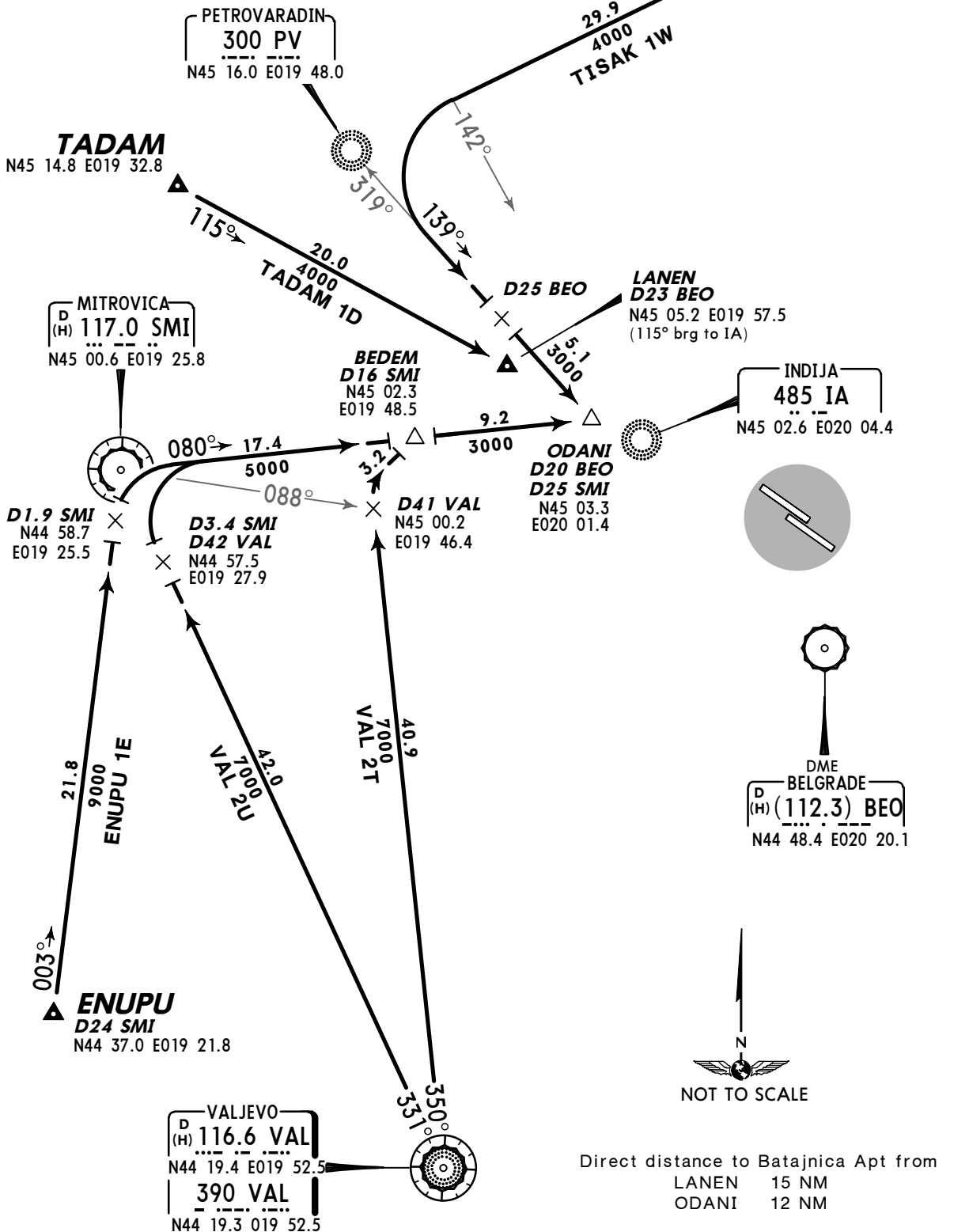


**ENUPU 1E [ENUP1E]  
TADAM 1D [TADA1D]  
TISAK 1W [TISA1W]  
VAL 2T, VAL 2U  
RWY 12L ARRIVALS**

**~~SPEEDS~~ MAX 250 KT BELOW 10000'**

**TEMPORARY PROCEDURES**  
REFER ALSO TO LATEST NOTAMS

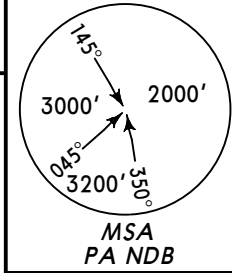
**TISAK**  
N45 25.3 E020 13.6





Apt Elev  
281'

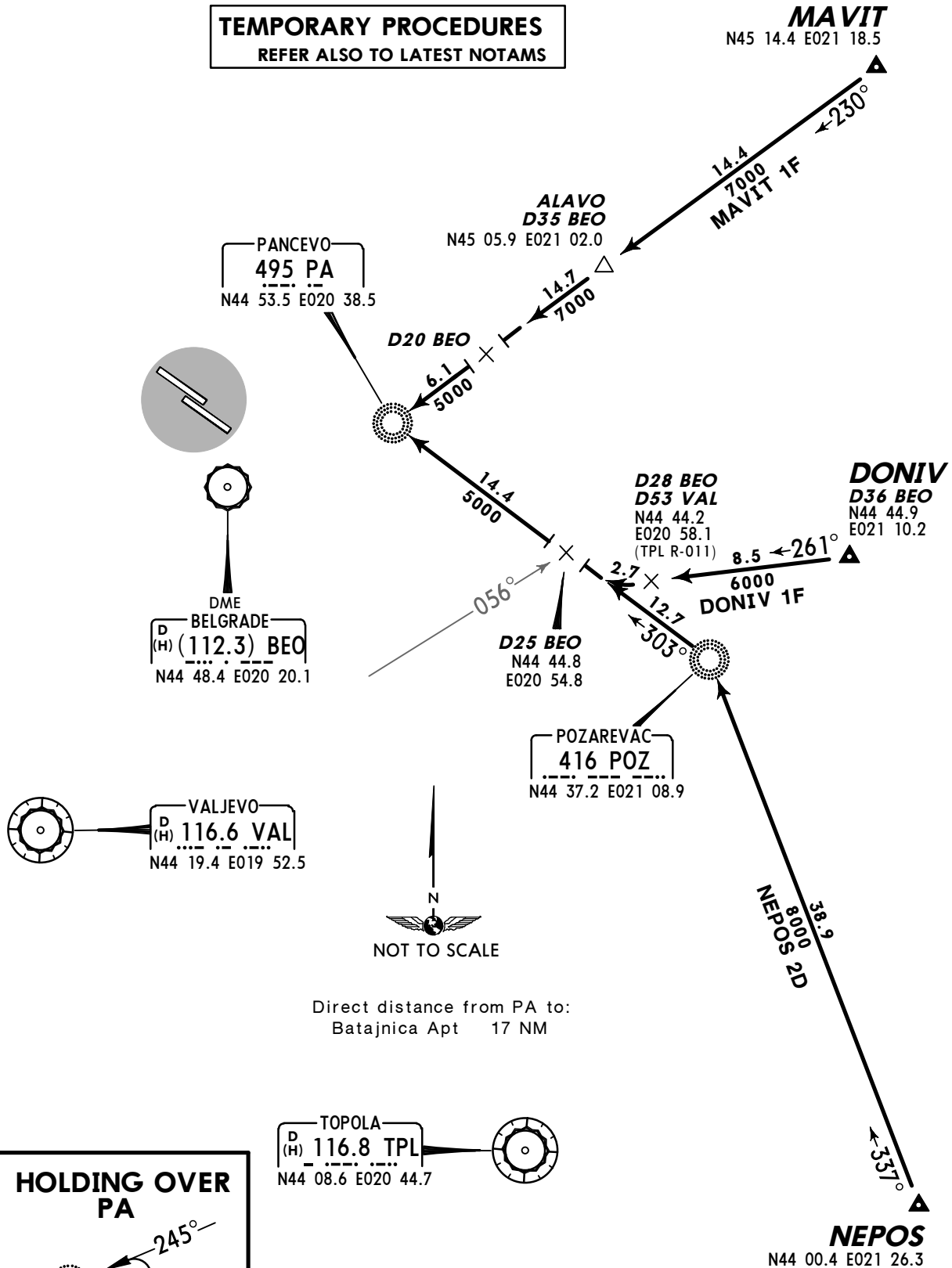
Alt Set: hPa  
Trans level: By ATC Trans alt: 10000'



DONIV 1F [DONI1F]  
MAVIT 1F [MAVI1F]  
NEPOS 2D [NEPO2D]  
RWY 30R ARRIVALS

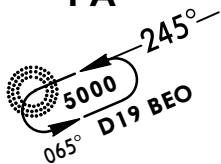
**SPEED** MAX 250 KT BELOW 10000'

**TEMPORARY PROCEDURES**  
REFER ALSO TO LATEST NOTAMS



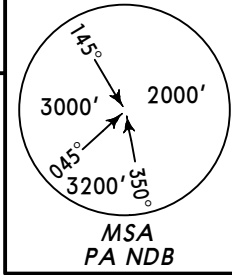
Direct distance from PA to:  
Batajnica Apt 17 NM

**HOLDING OVER PA**



Apt Elev  
281'

Alt Set: hPa  
Trans level: By ATC Trans alt: 10000'



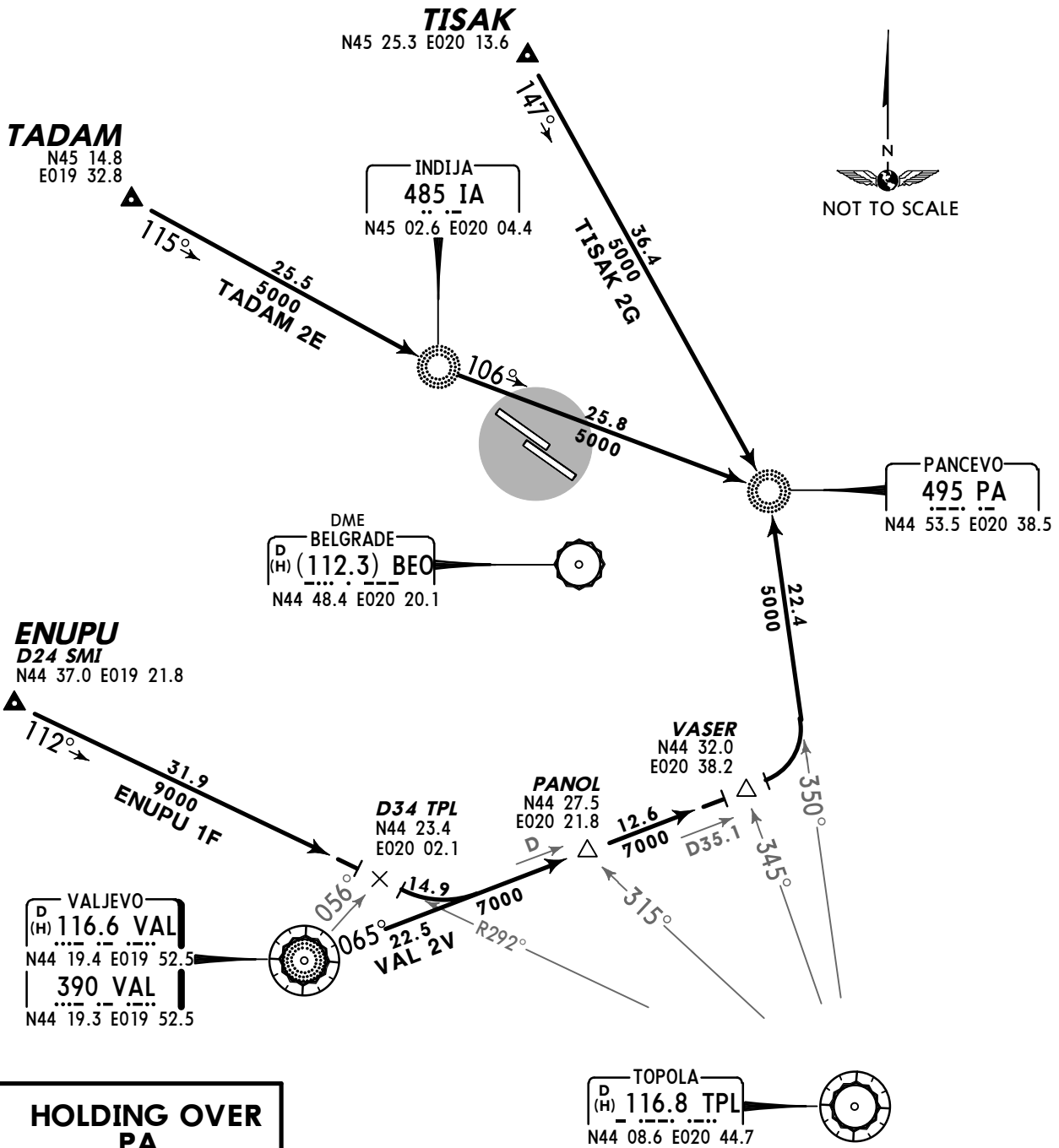
ENUPU 1F [ENUP1F]  
TADAM 2E [TADA2E]  
TISAK 2G [TISA2G]  
VAL 2V

RWY 30R ARRIVALS

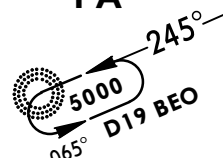
**SPEED** MAX 250 KT BELOW 10000'

**TEMPORARY PROCEDURES**

REFER ALSO TO LATEST NOTAMS



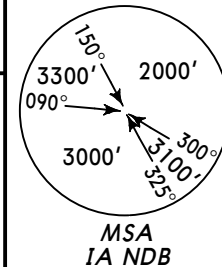
**HOLDING OVER PA**



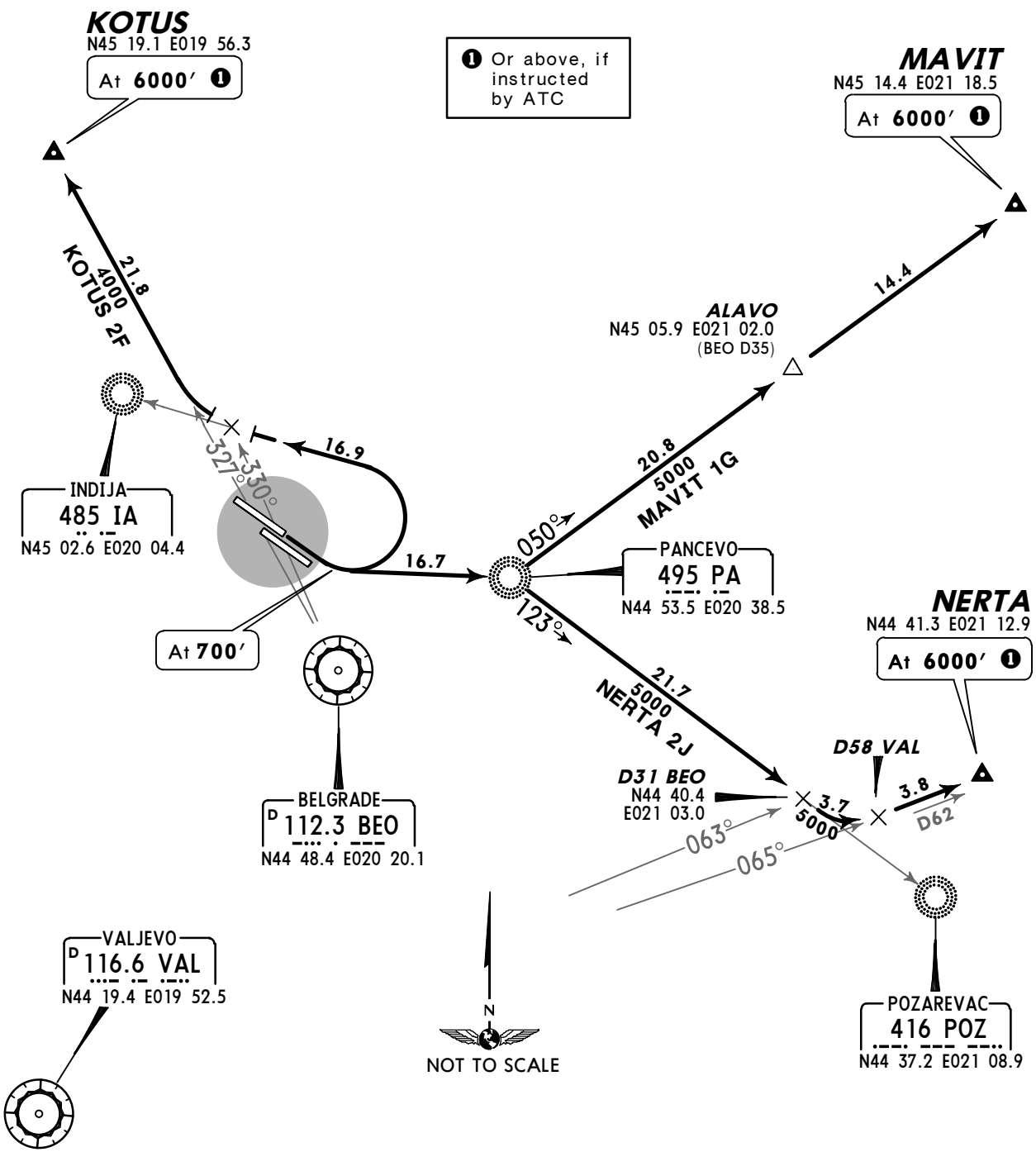
Direct distance from PA to:  
Batajnica Apt 17 NM

Apt Elev  
281'

Trans level: By ATC Trans alt: 10000'



**KOTUS TWO FOXTROT (KOTUS 2F)**  
**MAVIT ONE GOLF (MAVIT 1G) [MAVI1G]**  
**NERTA TWO JULIETT (NERTA 2J) [NERT2J]**  
**RWY 12L DEPARTURES**  
**~~SPEED~~ MAX 250 KT BELOW 10000'**

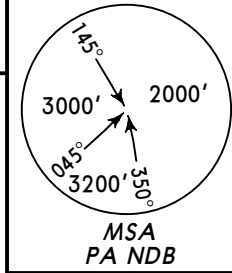


Initial climb clearance **6000'** , higher only when cleared by ATC

SID	ROUTING
<b>KOTUS 2F</b>	Climb straight ahead, at 700' turn LEFT towards IA, at BEO R-330 turn RIGHT, intercept BEO R-327 to KOTUS.
<b>MAVIT 1G</b>	Climb straight ahead, at 700' turn LEFT to PA, turn LEFT, 050° bearing to MAVIT.
<b>NERTA 2J</b>	Climb straight ahead, at 700' turn LEFT to PA, turn RIGHT, 123° bearing towards POZ, at D31 BEO (VAL R-063) turn LEFT, intercept VAL R-065 to NERTA.

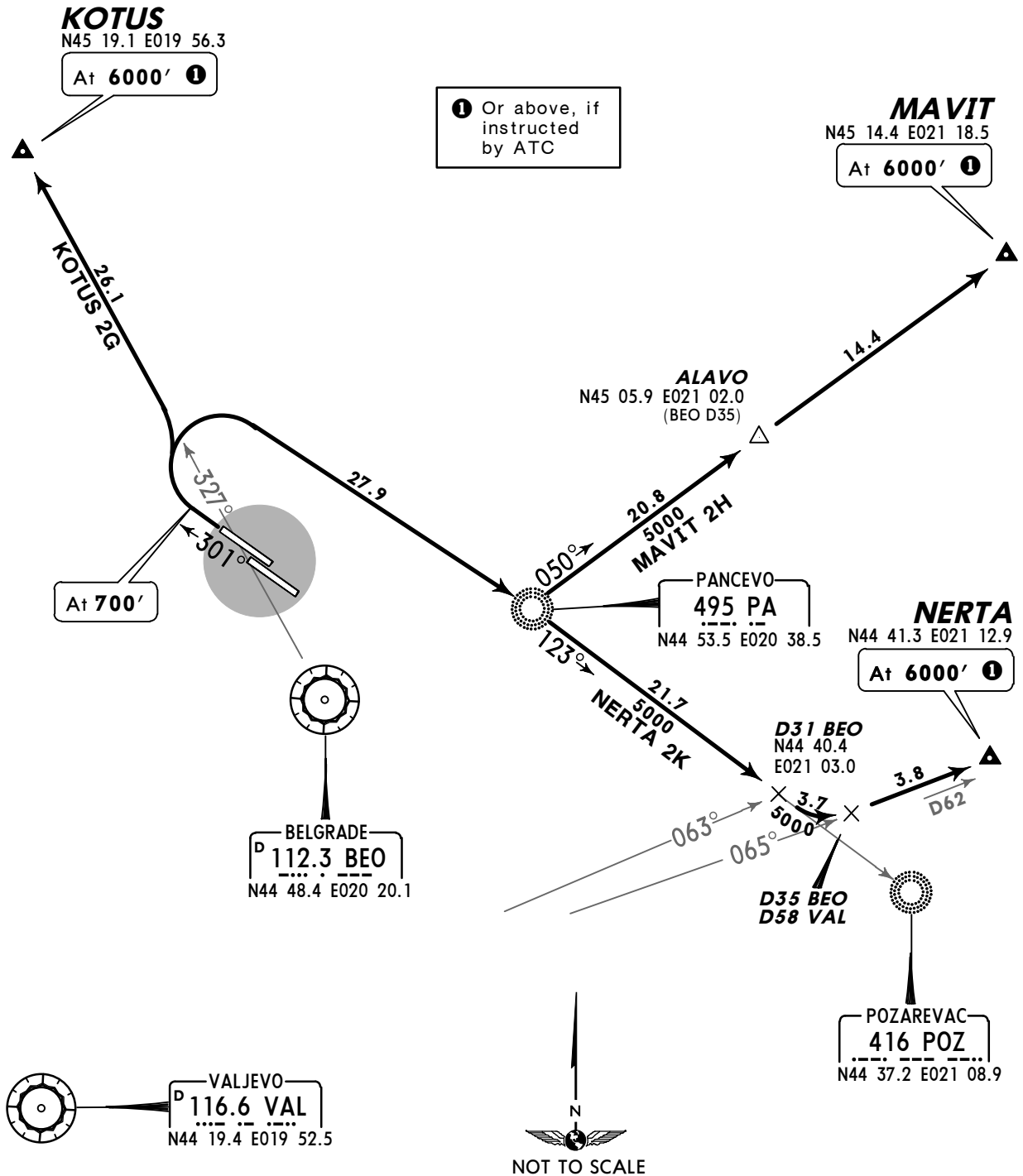
Apt Elev  
281'

Trans level: By ATC Trans alt: 10000'



KOTUS TWO GOLF (KOTUS 2G)[KOTU2G]  
MAVIT TWO HOTEL (MAVIT 2H)[MAVI2H]  
NERTA TWO KILO (NERTA 2K)[NERT2K]  
RWY 30R DEPARTURES

**SPEED** MAX 250 KT BELOW 10000'



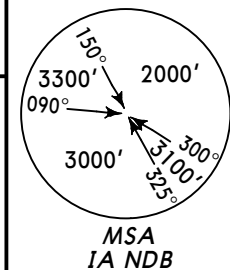
① Or above, if instructed by ATC

Initial climb clearance **6000'** , higher only when cleared by ATC

SID	ROUTING
<b>KOTUS 2G</b>	Climb straight ahead, at 700' turn RIGHT, intercept BEO R-327 to KOTUS.
<b>MAVIT 2H</b>	Climb straight ahead, at 700' turn RIGHT to PA, turn LEFT, 050° bearing to MAVIT.
<b>NERTA 2K</b>	Climb straight ahead, at 700' turn RIGHT to PA, 123° bearing towards POZ, at D31 BEO (VAL R-063) turn LEFT, intercept VAL R-065 to NERTA.

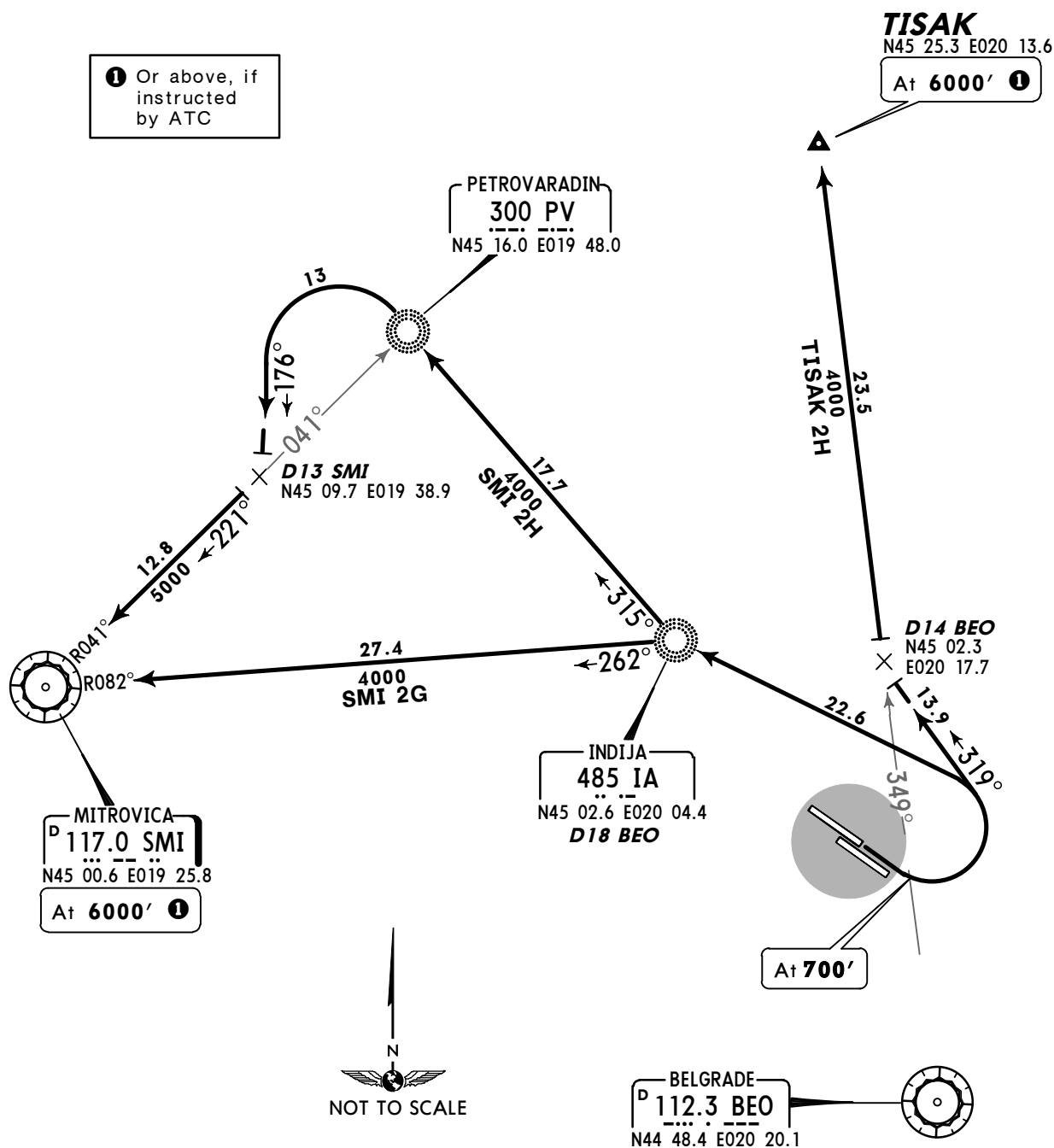
Apt Elev  
281'

Trans level: By ATC Trans alt: 10000'



MITROVICA TWO GOLF (SMI 2G)  
MITROVICA TWO HOTEL (SMI 2H)  
TISAK TWO HOTEL (TISAK 2H) [TISA2H]  
RWY 12L DEPARTURES  
**~~SPEED~~ MAX 250 KT BELOW 10000'**

① Or above, if instructed by ATC



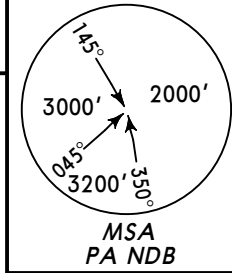
Initial climb clearance 6000' , higher only when cleared by ATC	
SID	ROUTING
<b>SMI 2G</b>	Climb straight ahead, at 700' turn LEFT to IA, turn LEFT, intercept SMI R-082 inbound to SMI.
<b>SMI 2H</b>	Climb straight ahead, at 700' turn LEFT to IA, turn RIGHT, 315° bearing to PV, turn LEFT, 176° track to D13 SMI, turn RIGHT, intercept SMI R-041 inbound to SMI.
<b>TISAK 2H</b>	Climb straight ahead, at 700' turn LEFT, 319° track to D14 BEO, turn RIGHT, intercept BEO R-349 to TISAK.

CHANGES: SIDs renumbered; MSA.

© JEPPESEN, 2009, 2011. ALL RIGHTS RESERVED.

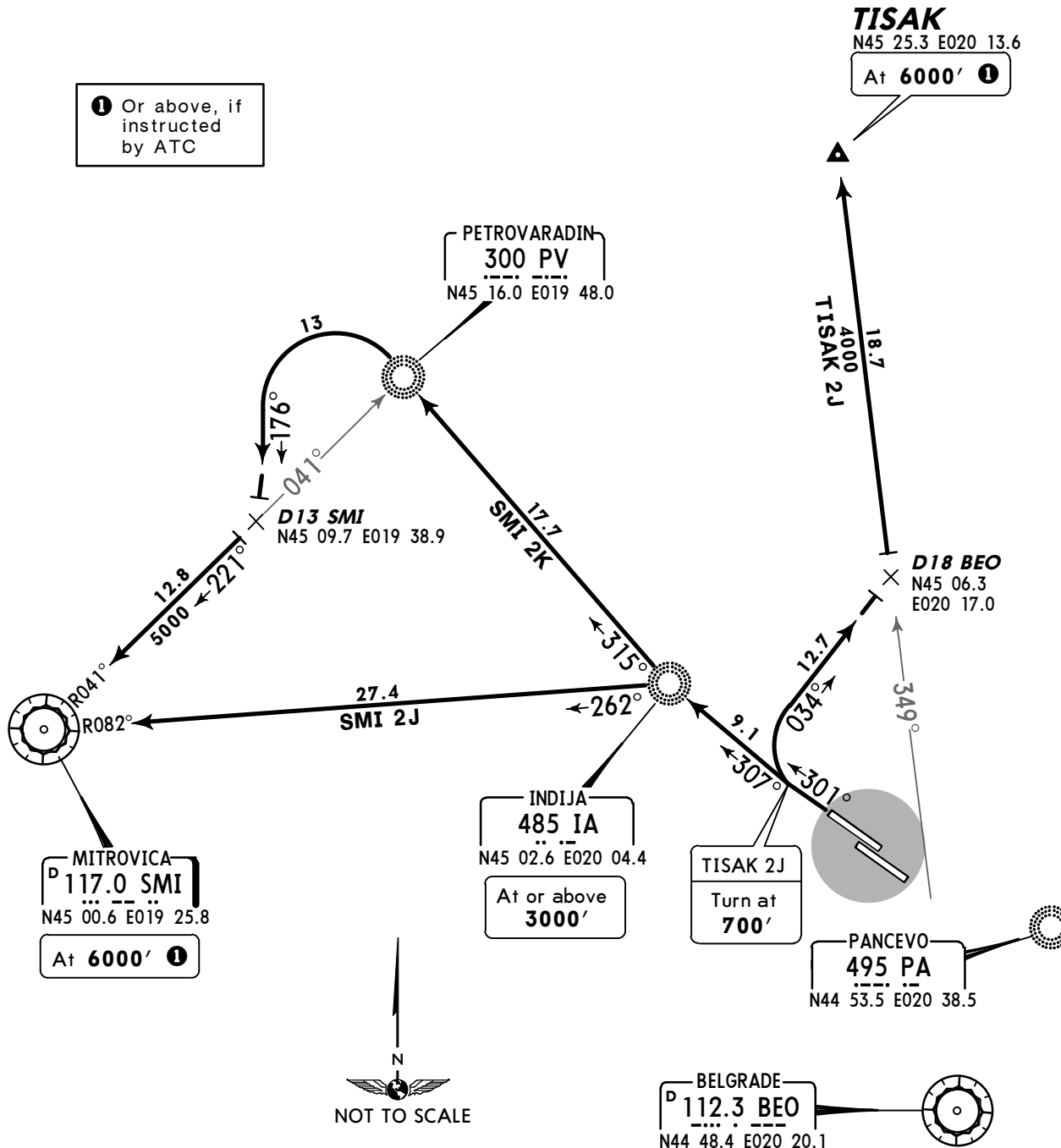
Apt Elev  
281'

Trans level: By ATC Trans alt: 10000'



MITROVICA TWO JULIETT (SMI 2J)  
MITROVICA TWO KILO (SMI 2K)  
TISAK TWO JULIETT (TISAK 2J)[TISA2J]  
RWY 30R DEPARTURES  
**~~SPEED~~ MAX 250 KT BELOW 10000'**

① Or above, if instructed by ATC

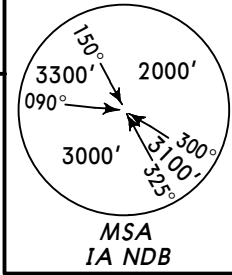


Initial climb clearance **6000'** , higher only when cleared by ATC

SID	ROUTING
SMI 2J	Climb straight ahead to IA, turn LEFT, intercept SMI R-082 inbound to SMI.
SMI 2K	Climb straight ahead to IA, 315° bearing to PV, turn LEFT, 176° track to D13 SMI, turn RIGHT, intercept SMI R-041 inbound to SMI.
TISAK 2J	Climb straight ahead, at 700' turn RIGHT, 034° track to D18 BEO, turn LEFT, intercept BEO R-349 to TISAK.

Apt Elev  
281'

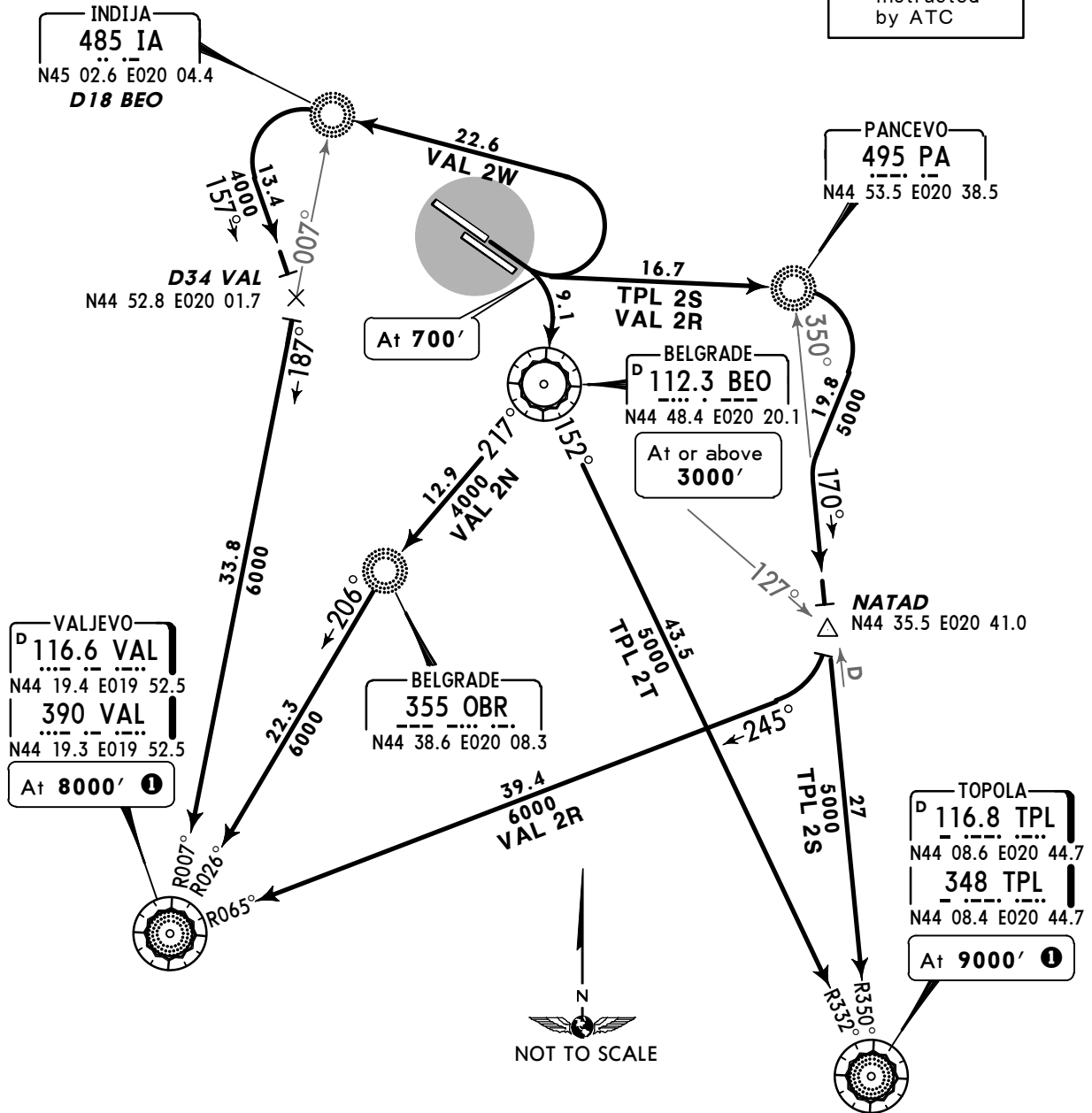
Trans level: By ATC Trans alt: 10000'



TOPOLA TWO SIERRA (TPL 2S)  
TOPOLA TWO TANGO (TPL 2T)  
VALJEVO TWO NOVEMBER (VAL 2N)  
VALJEVO TWO ROMEO (VAL 2R)  
VALJEVO TWO WHISKEY (VAL 2W)  
RWY 12L DEPARTURES

**SPEEDS MAX 250 KT BELOW 10000'**

① Or above, if instructed by ATC

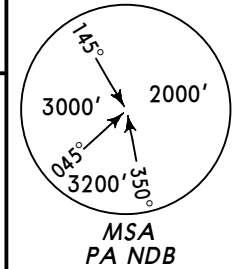


Initial climb clearance **6000'** , higher only when cleared by ATC

SID	ROUTING
TPL 2S	Climb straight ahead, at 700' turn LEFT to PA, turn RIGHT, intercept TPL R-350 inbound to TPL.
TPL 2T	Climb straight ahead, at 700' turn RIGHT to BEO, turn LEFT, BEO R-152 to TPL.
VAL 2N	Climb straight ahead, at 700' turn RIGHT to BEO, turn RIGHT, BEO R-217 to OBR, intercept VAL R-026 inbound to VAL.
VAL 2R	Climb straight ahead, at 700' turn LEFT to PA, turn RIGHT, intercept TPL R-350 inbound, at NATAD turn RIGHT, intercept VAL R-065 inbound to VAL.
VAL 2W	Climb straight ahead, at 700' turn LEFT to IA, turn LEFT, 157° track to D34 VAL, turn RIGHT, intercept VAL R-007 inbound to VAL.

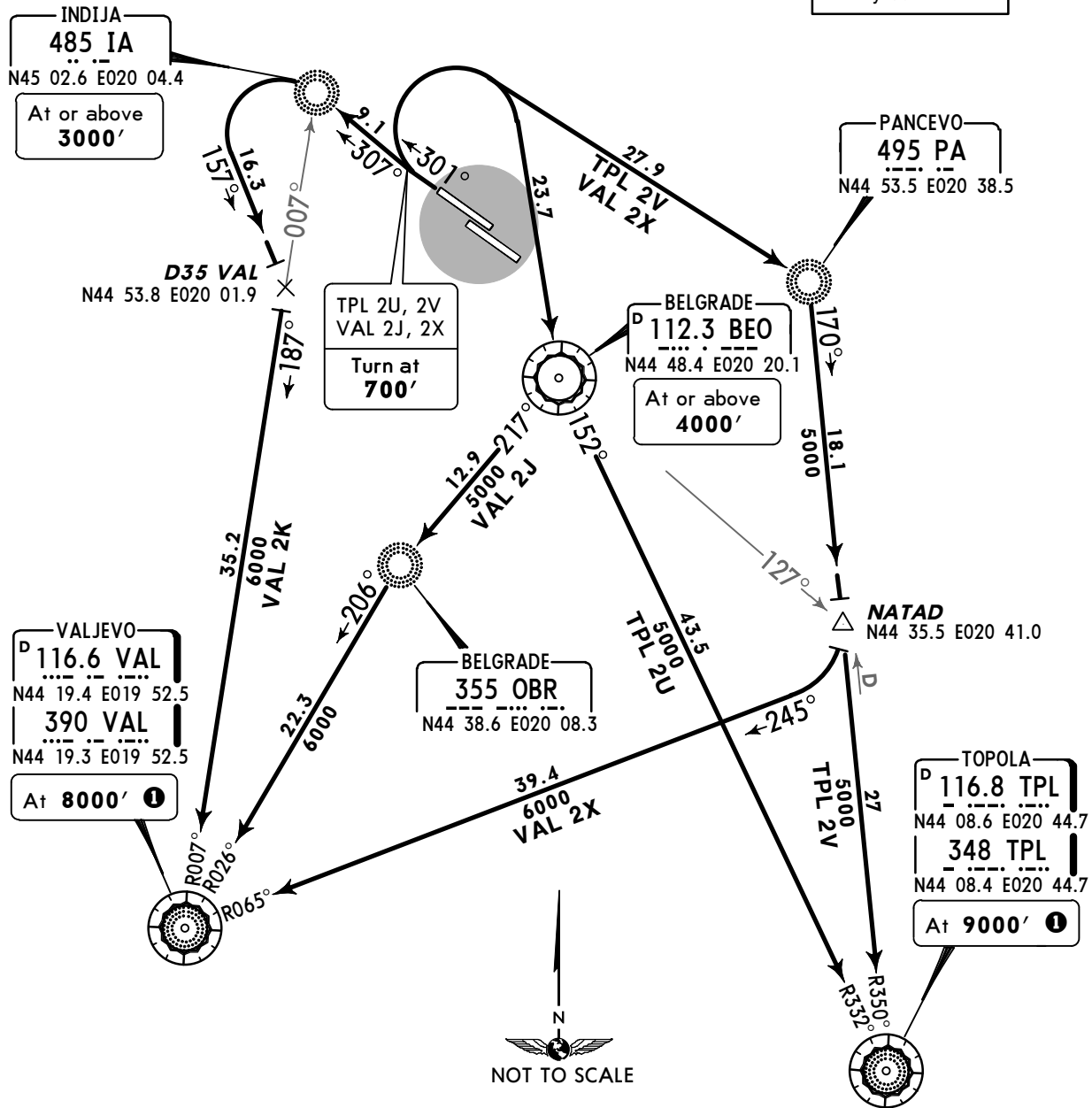
Apt Elev  
281'

Trans level: By ATC Trans alt: 10000'



TOPOLA TWO UNIFORM (TPL 2U)  
TOPOLA TWO VICTOR (TPL 2V)  
VALJEVO TWO JULIETT (VAL 2J)  
VALJEVO TWO KILO (VAL 2K)  
VALJEVO TWO X-RAY (VAL 2X)  
RWY 30R DEPARTURES  
**SPEEDS MAX 250 KT BELOW 10000'**

1 Or above, if instructed by ATC



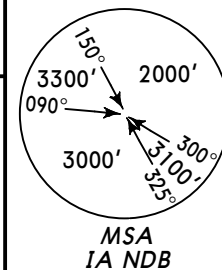
Initial climb clearance **6000'**, higher only when cleared by ATC

SID	ROUTING
TPL 2U	Climb straight ahead, at 700' turn RIGHT to BEO, turn LEFT, intercept BEO R-152 to TPL.
TPL 2V	Climb straight ahead, at 700' turn RIGHT to PA, turn RIGHT, intercept TPL R-350 inbound to TPL.
VAL 2J	Climb straight ahead, at 700' turn RIGHT to BEO, turn RIGHT, BEO R-217 to OBR, intercept VAL R-026 inbound to VAL.
VAL 2K	Climb straight ahead to IA, turn LEFT, 157° track to D35 VAL, turn RIGHT, intercept VAL R-007 inbound to VAL.
VAL 2X	Climb straight ahead, at 700' turn RIGHT to PA, turn RIGHT, intercept TPL R-350 inbound, at NATAD turn RIGHT, intercept VAL R-065 inbound to VAL.



Apt Elev  
281'

Trans level: By ATC Trans alt: 10000'



**DONIV ONE KILO (DONIV 1K) [DONI1K]  
KOTUS ONE X-RAY (KOTUS 1X) [KOTU1X]  
MAVIT ONE GOLF (MAVIT 1G) [MAVI1G]  
RWY 12L DEPARTURES**

**~~SPEED~~ MAX 250 KT BELOW 10000'**

**TEMPORARY PROCEDURES**  
REFER ALSO TO LATEST NOTAMS

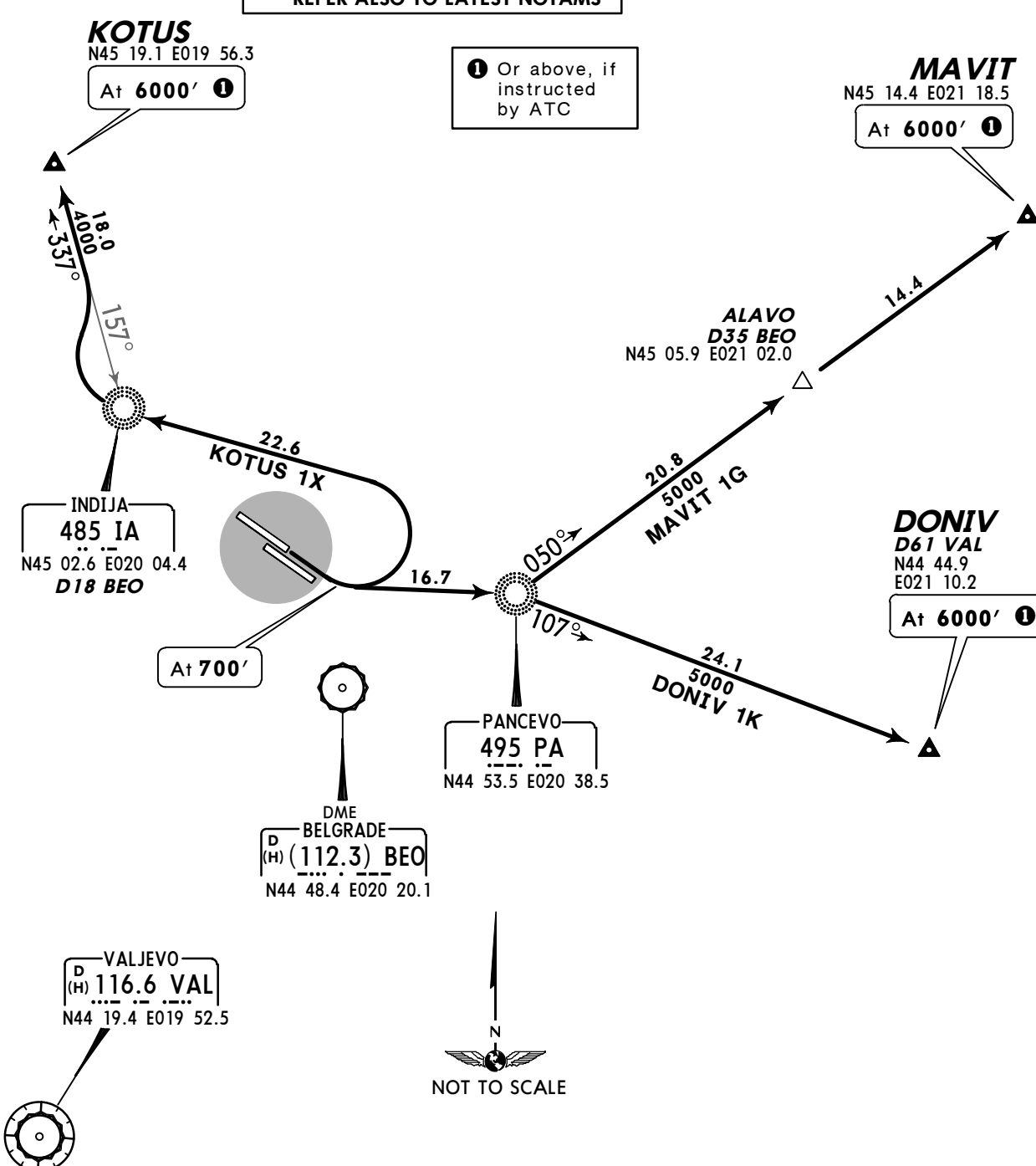
**KOTUS**  
N45 19.1 E019 56.3

At 6000' ①

① Or above, if instructed by ATC

**MAVIT**  
N45 14.4 E021 18.5

At 6000' ①

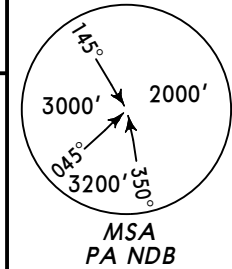


Initial climb clearance **6000'** , higher only when cleared by ATC

SID	ROUTING
<b>DONIV 1K</b>	Climb straight ahead, at 700' turn LEFT to PA, 107° bearing to DONIV.
<b>KOTUS 1X</b>	Climb straight ahead, at 700' turn LEFT to IA, turn RIGHT, intercept 337° bearing from IA to KOTUS.
<b>MAVIT 1G</b>	Climb straight ahead, at 700' turn LEFT to PA, turn LEFT, 050° bearing to MAVIT.

Apt Elev  
281'

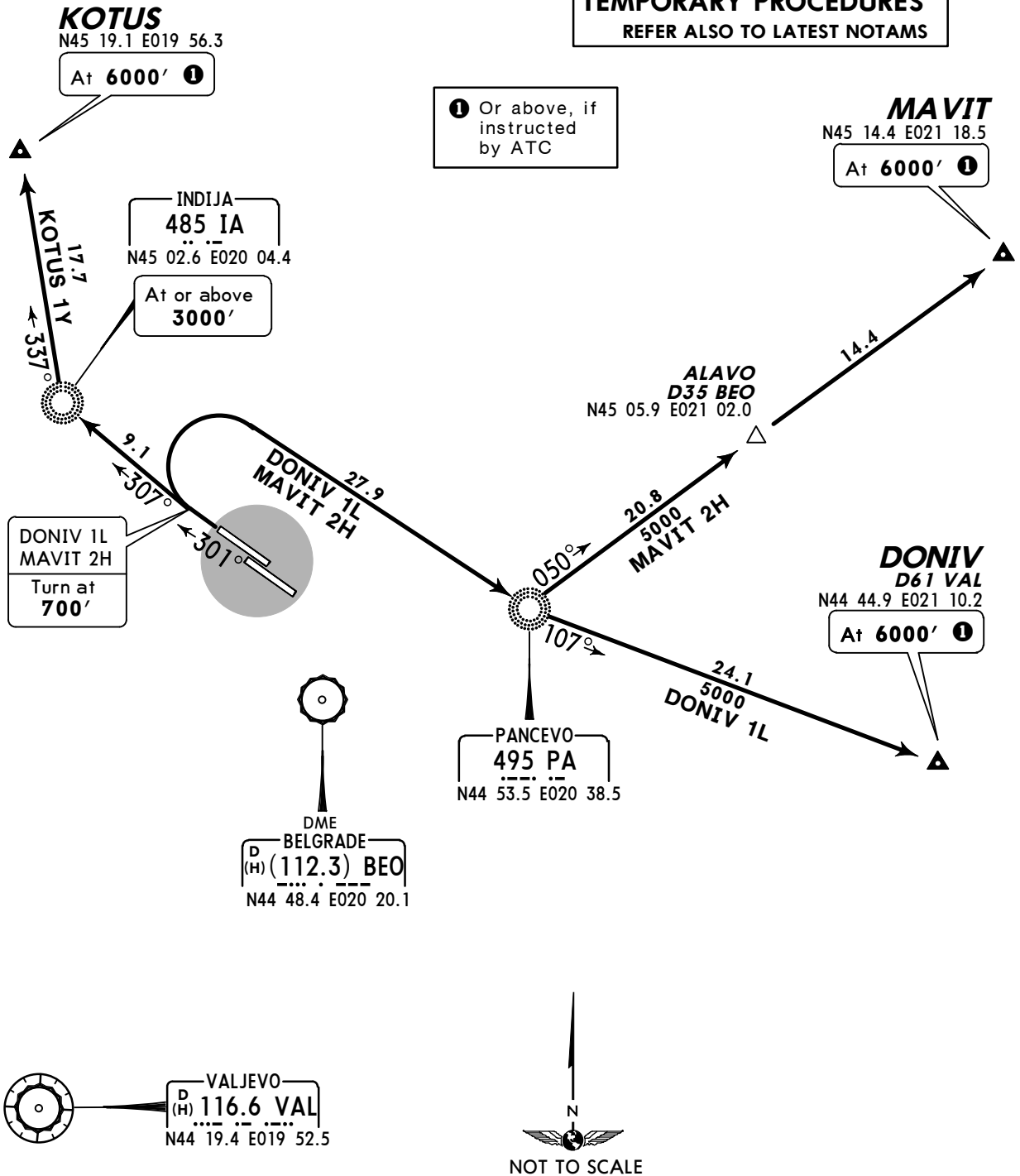
Trans level: By ATC Trans alt: 10000'



**DONIV ONE LIMA (DONIV 1L) [DONI1L]  
KOTUS ONE YANKEE (KOTUS 1Y)[KOTU1Y]  
MAVIT TWO HOTEL (MAVIT 2H)[MAVI2H]  
RWY 30R DEPARTURES**

**~~SPEEDS~~ MAX 250 KT BELOW 10000'**

**TEMPORARY PROCEDURES**  
REFER ALSO TO LATEST NOTAMS

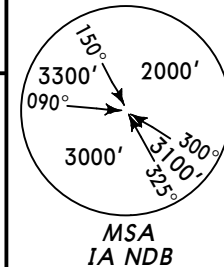


Initial climb clearance **6000'** , higher only when cleared by ATC

SID	ROUTING
<b>DONIV 1L</b>	Climb straight ahead, at 700' turn RIGHT to PA, 107° bearing to DONIV.
<b>KOTUS 1Y</b>	Climb straight ahead to IA, turn RIGHT, 337° bearing to KOTUS.
<b>MAVIT 2H</b>	Climb straight ahead, at 700' turn RIGHT to PA, turn LEFT, 050° bearing to MAVIT.

Apt Elev  
281'

Trans level: By ATC Trans alt: 10000'

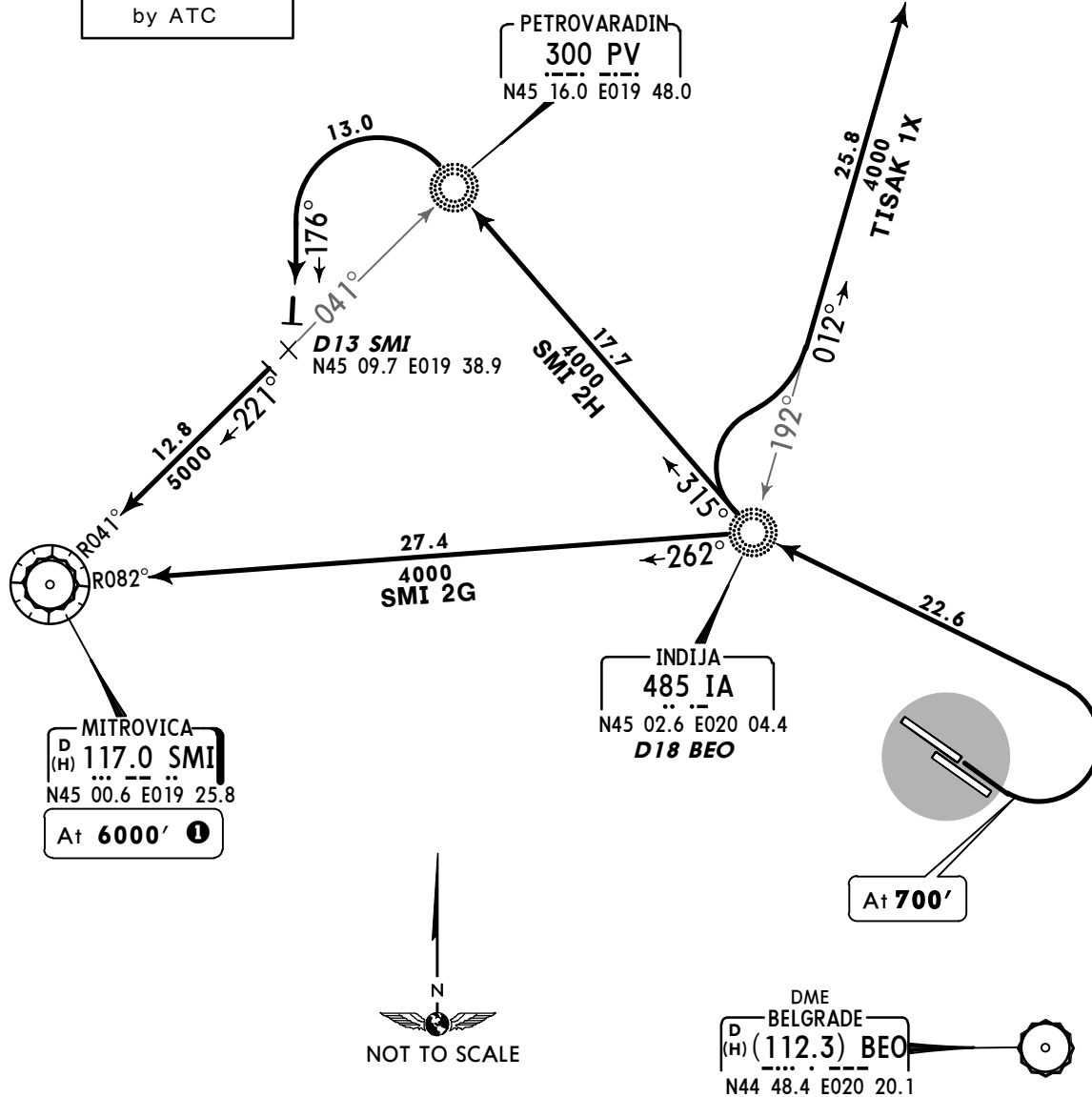


MITROVICA TWO GOLF (SMI 2G)  
MITROVICA TWO HOTEL (SMI 2H)  
TISAK ONE X-RAY (TISAK 1X) [TISA 1X]  
RWY 12L DEPARTURES  
**~~SPEED~~ MAX 250 KT BELOW 10000'**

**TEMPORARY PROCEDURES**  
REFER ALSO TO LATEST NOTAMS

① Or above, if instructed by ATC

**TISAK**  
N45 25.3 E020 13.6  
At 6000' ①



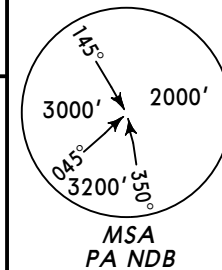
DME  
BELGRADE  
D (H) (112.3) BEO  
N44 48.4 E020 20.1

Initial climb clearance **6000'** , higher only when cleared by ATC

SID	ROUTING
<b>SMI 2G</b>	Climb straight ahead, at 700' turn LEFT to IA, turn LEFT, intercept SMI R-082 inbound to SMI.
<b>SMI 2H</b>	Climb straight ahead, at 700' turn LEFT to IA, turn RIGHT, 315° bearing to PV, turn LEFT, 176° track to D13 SMI, turn RIGHT, intercept SMI R-041 inbound to SMI.
<b>TISAK 1X</b>	Climb straight ahead, at 700' turn LEFT to IA, turn RIGHT, intercept 012° bearing from IA to TISAK.

Apt Elev  
281'

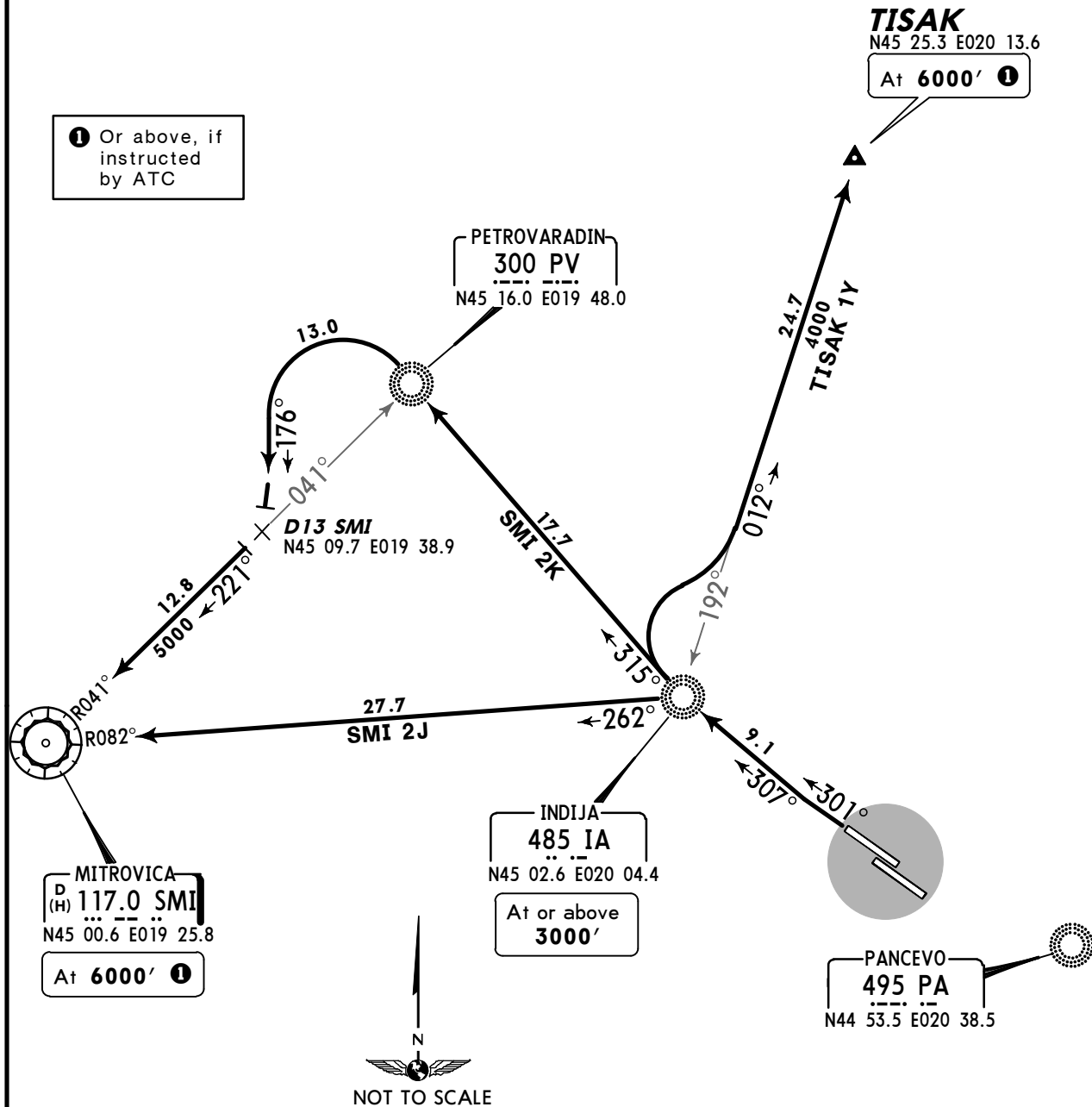
Trans level: By ATC Trans alt: 10000'



MITROVICA TWO JULIETT (SMI 2J)  
MITROVICA TWO KILO (SMI 2K)  
TISAK ONE YANKEE (TISAK 1Y) [TISA1Y]  
RWY 30R DEPARTURES  
**~~SPEED~~ MAX 250 KT BELOW 10000'**

**TEMPORARY PROCEDURES**  
REFER ALSO TO LATEST NOTAMS

① Or above, if instructed by ATC

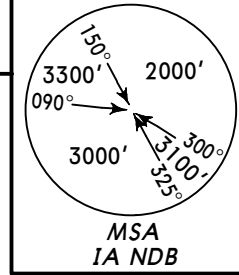


Initial climb clearance **6000'** , higher only when cleared by ATC

SID	ROUTING
<b>SMI 2J</b>	Climb straight ahead to IA, turn LEFT, intercept SMI R-082 inbound to SMI.
<b>SMI 2K</b>	Climb straight ahead to IA, 315° bearing to PV, turn LEFT, 176° track to D13 SMI, turn RIGHT, intercept SMI R-041 inbound to SMI.
<b>TISAK 1Y</b>	Climb straight ahead to IA, turn RIGHT, intercept 012° bearing from IA to TISAK.

Apt Elev  
281'

Trans level: By ATC Trans alt: 10000'

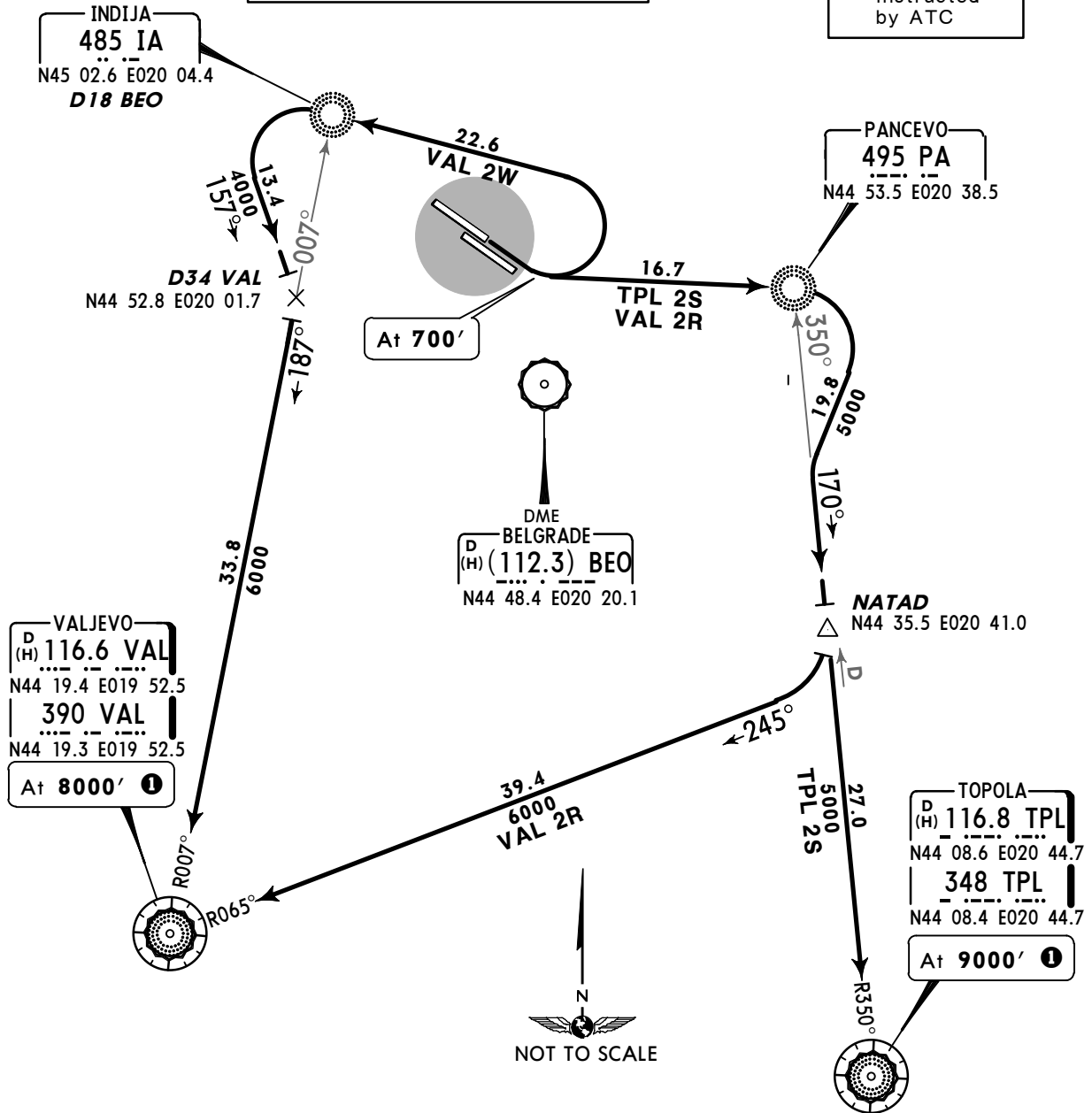


TOPOLA TWO SIERRA (TPL 2S)  
VALJEVO TWO ROMEO (VAL 2R)  
VALJEVO TWO WHISKEY (VAL 2W)  
RWY 12L DEPARTURES

**SPEED MAX 250 KT BELOW 10000'**

**TEMPORARY PROCEDURES**  
REFER ALSO TO LATEST NOTAMS

**1** Or above, if instructed by ATC

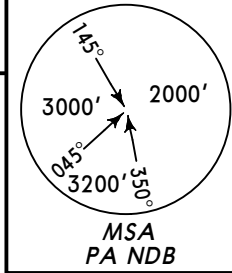


Initial climb clearance **6000'**, higher only when cleared by ATC

SID	ROUTING
TPL 2S	Climb straight ahead, at 700' turn LEFT to PA, turn RIGHT, intercept TPL R-350 inbound to TPL.
VAL 2R	Climb straight ahead, at 700' turn LEFT to PA, turn RIGHT, intercept TPL R-350 inbound, at NATAD turn RIGHT, intercept VAL R-065 inbound to VAL.
VAL 2W	Climb straight ahead, at 700' turn LEFT to IA, turn LEFT, 157° track to D34 VAL, turn RIGHT, intercept VAL R-007 inbound to VAL.

Apt Elev  
281'

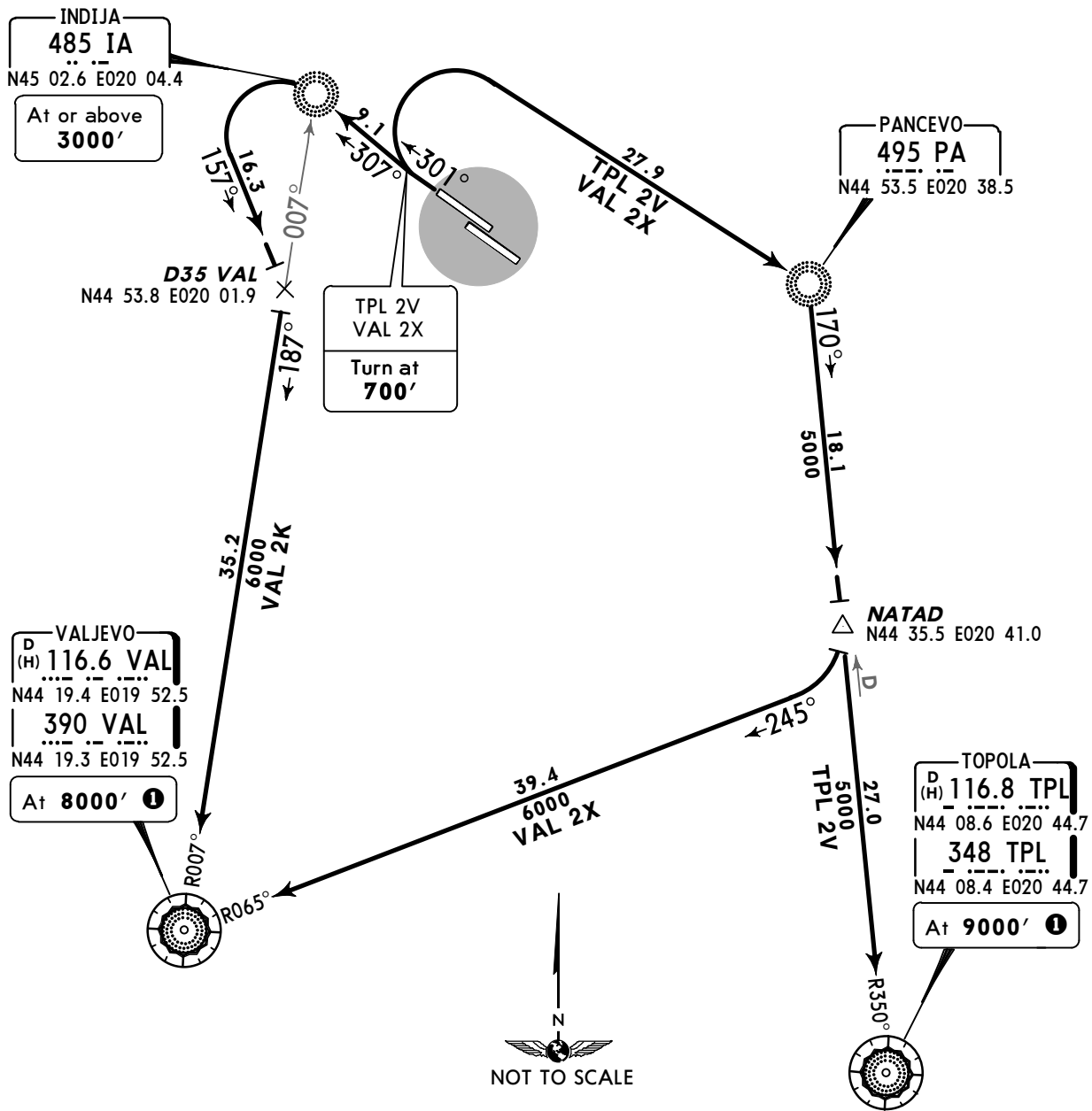
Trans level: By ATC Trans alt: 10000'



TOPOLA TWO VICTOR (TPL 2V)  
VALJEVO TWO KILO (VAL 2K)  
VALJEVO TWO X-RAY (VAL 2X)  
RWY 30R DEPARTURES  
**SPEED MAX 250 KT BELOW 10000'**

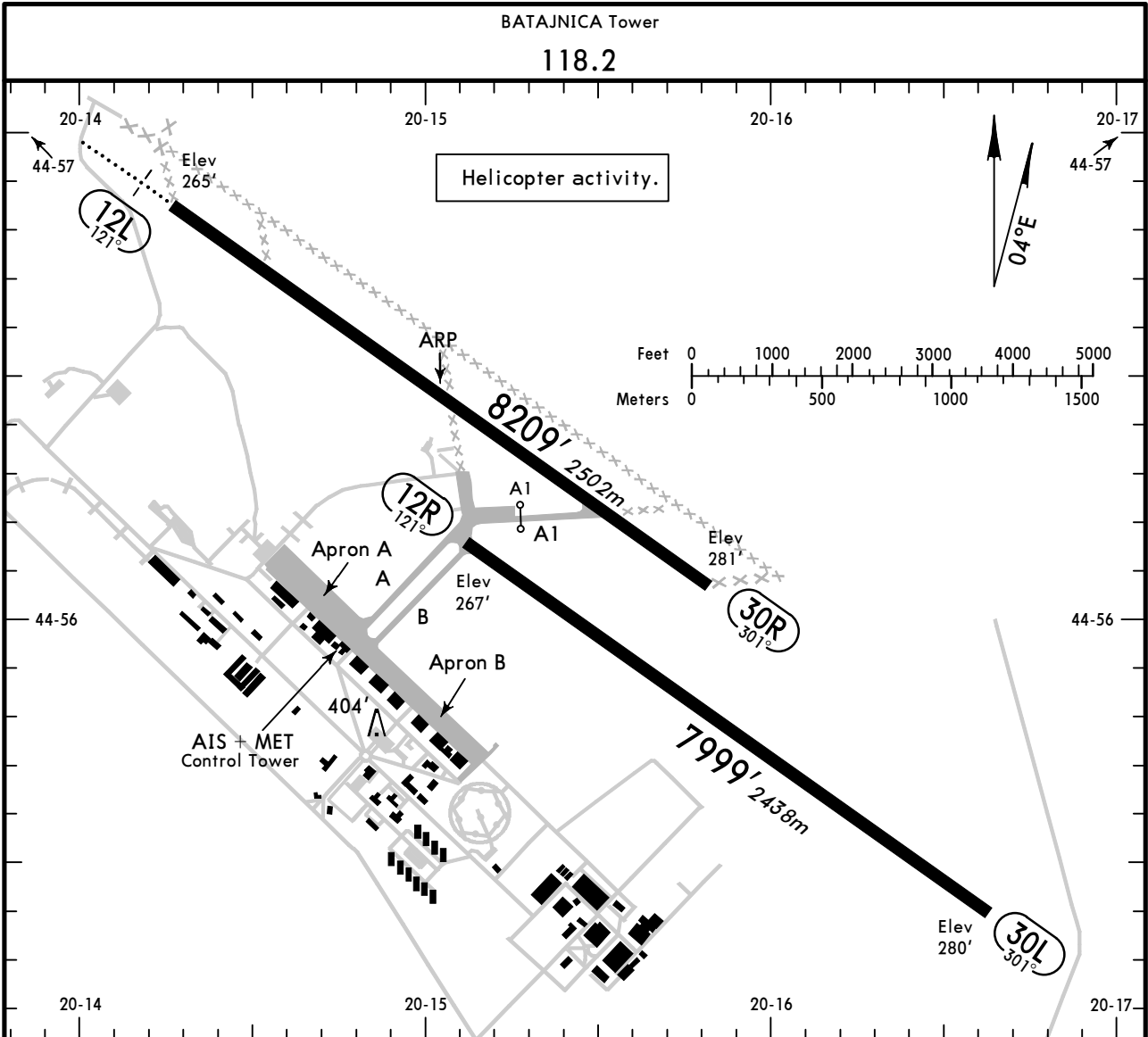
**TEMPORARY PROCEDURES**  
REFER ALSO TO LATEST NOTAMS

1 Or above, if instructed by ATC



Initial climb clearance **6000'**, higher only when cleared by ATC

SID	ROUTING
TPL 2V	Climb straight ahead, at 700' turn RIGHT to PA, turn RIGHT, intercept TPL R-350 inbound to TPL.
VAL 2K	Climb straight ahead to IA, turn LEFT, 157° track to D35 VAL, turn RIGHT, intercept VAL R-007 inbound to VAL.
VAL 2X	Climb straight ahead, at 700' turn RIGHT to PA, turn RIGHT, intercept TPL R-350 inbound, at NADAT turn RIGHT, intercept VAL R-065 inbound to VAL.



ADDITIONAL RUNWAY INFORMATION

RWY	USABLE LENGTHS			WIDTH
	LANDING	BEYOND	TAKE-OFF	
	Threshold	Glide Slope		
12L	HIRL (60m) HIALS VASI (2.5°)	7048' 2148m		148' 45m
30R	HIRL (60m)			45m
12R				148' 45m
30L				45m

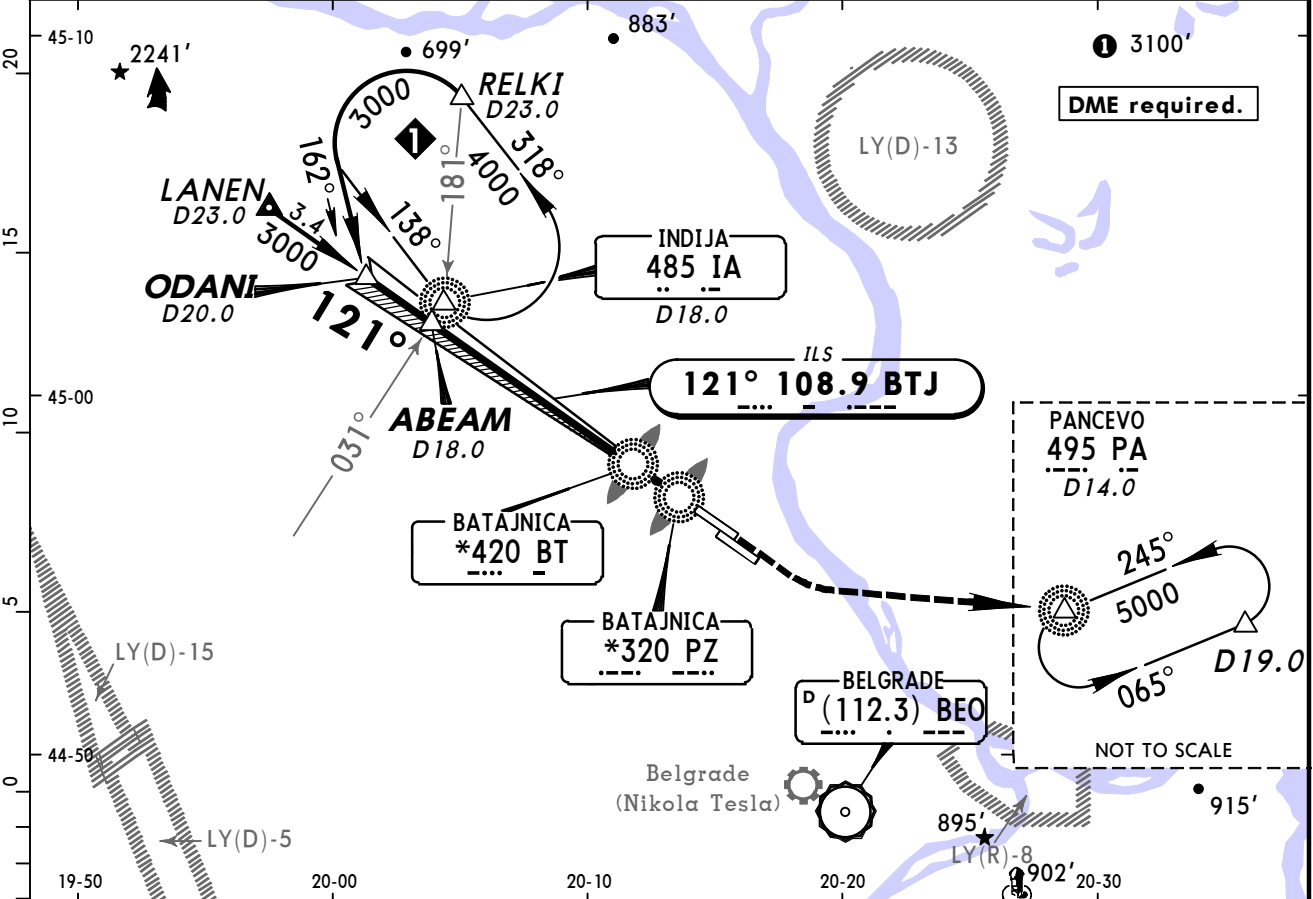
Standard

TAKE-OFF 1

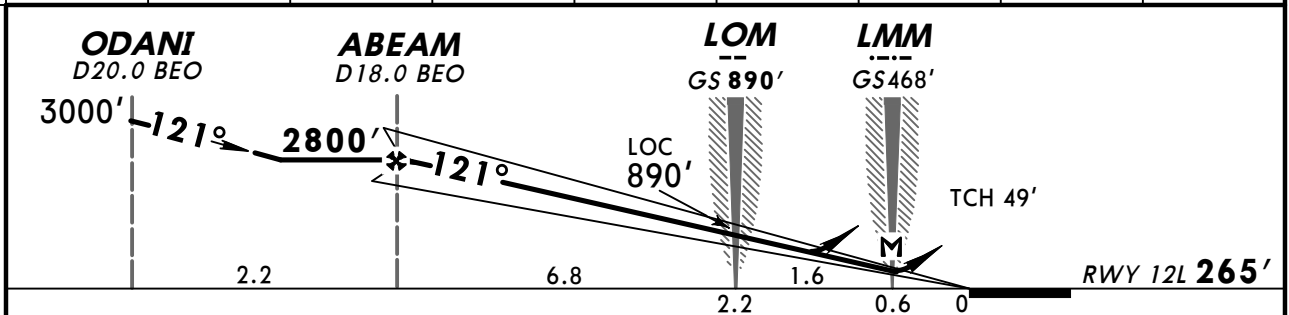
	LVP must be in force		
	RCLM (DAY only) or RL	RCLM (DAY only) or RL	NIL (DAY only)
A			
B	250m	400m	500m
C			
D	300m		

1 Operators applying U.S. Ops Specs: CL required below 300m.

BATAJNICA Approach				BATAJNICA Tower		
126.05				118.2		
LOC BTJ <b>108.9</b>	Final Apch Crs <b>121°</b>	GS LOM <b>890'</b> (625')	ILS DA(H) <b>465'</b> (200')	Apt Elev <b>281'</b> RWY <b>265'</b>		
MISSED APCH: Climb STRAIGHT AHEAD to 700', then turn LEFT climbing to PA NDB to 5000' and hold.						
Alt Set: hPa		Rwy Elev: 10 hPa	Trans level: By ATC		Trans alt: 10000'	MSA IA NDB



LOC (GS out)	BEO DME	17.0	16.0	15.0	14.0	13.0	12.0	LOM
	ALTITUDE	2480'	2210'	1930'	1650'	1370'	1090'	890'

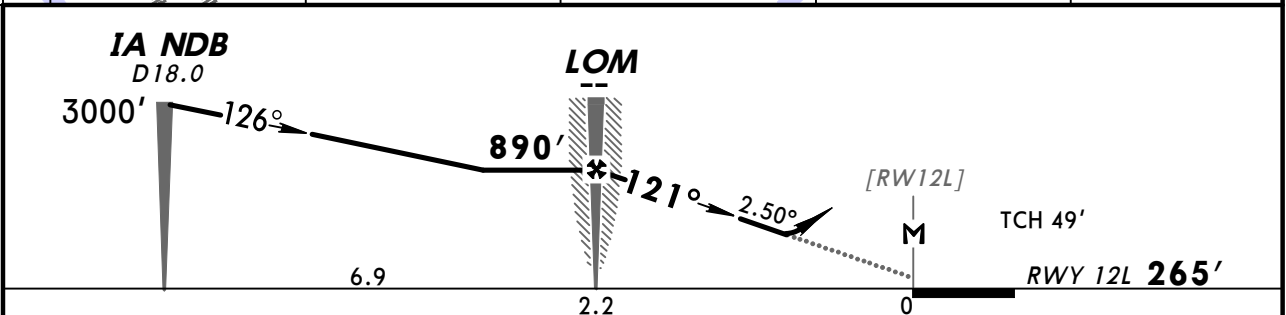
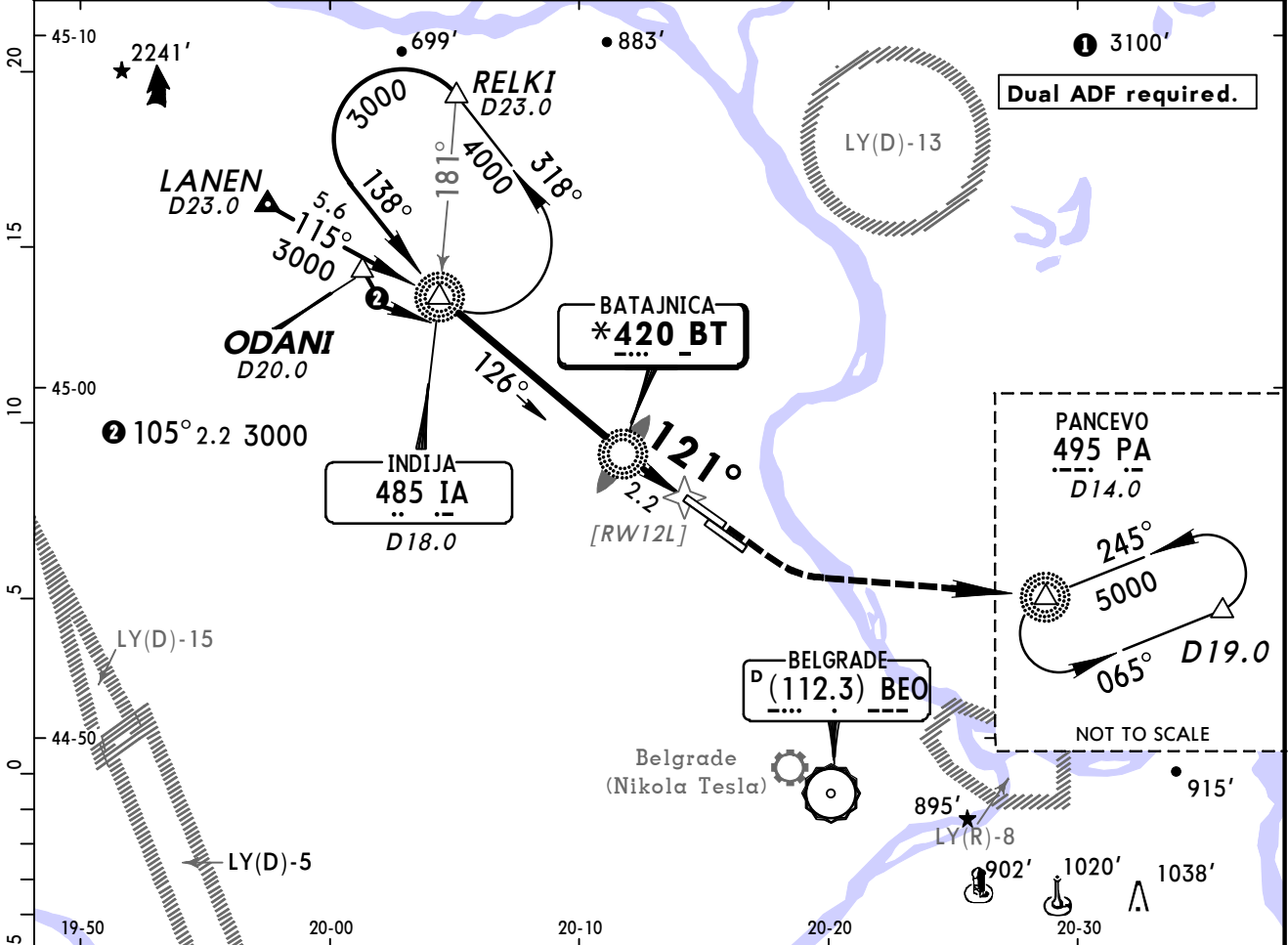


Gnd speed-Kts	70	90	100	120	140	160	HIALS VASI : VASI	700' ↑	5000' ↙ LT	PA 495
ILS GS or LOC Descent Angle 2.50°	310	398	442	531	619	707				
MAP at LMM										

PANS OPS	Standard STRAIGHT-IN LANDING RWY 12L				CIRCLE-TO-LAND TO RWY 30R Not authorized Southwest of airport		
	ILS DA(H) <b>465'</b> (200')		LOC (GS out) DA(H) <b>530'</b> (265')		Max Kts	MDA(H) VIS	
	FULL/Limited	ALS out	ALS out				
	A				100	690' (409')	1500m
B				135	790' (509')	1600m	
C	RVR 750m	RVR 1200m	RVR 900m	RVR 1300m	180	890' (609')	2400m
D					205	990' (709')	3600m



BATAJNICA Approach			BATAJNICA Tower		
126.05			118.2		
Lctr BT <b>420</b>	Final Apch Crs <b>121°</b>	Minimum Alt LOM <b>890' (625')</b>	DA(H) <b>640' (375')</b>	Apt Elev <b>281'</b>	RWY <b>265'</b>
<b>MISSED APCH: Climb STRAIGHT AHEAD to 700', then turn LEFT climbing to PA NDB to 5000' and hold.</b>					
Alt Set: hPa	Rwy Elev: 10 hPa	Trans level: By ATC	Trans alt: 10000'	MSA IA NDB	



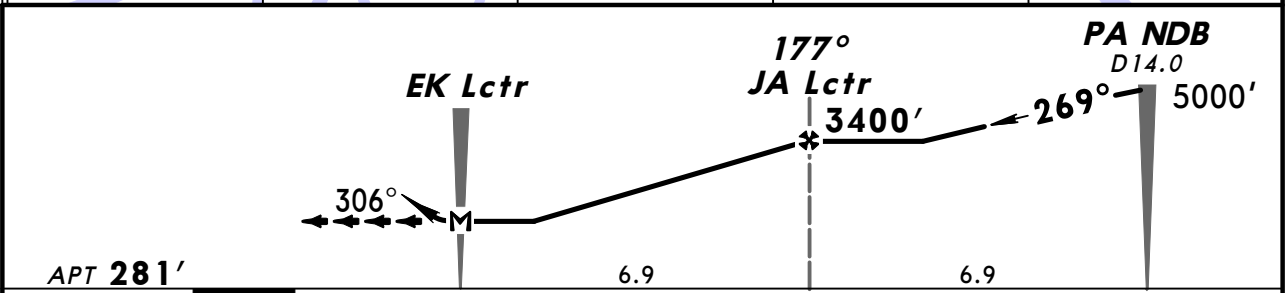
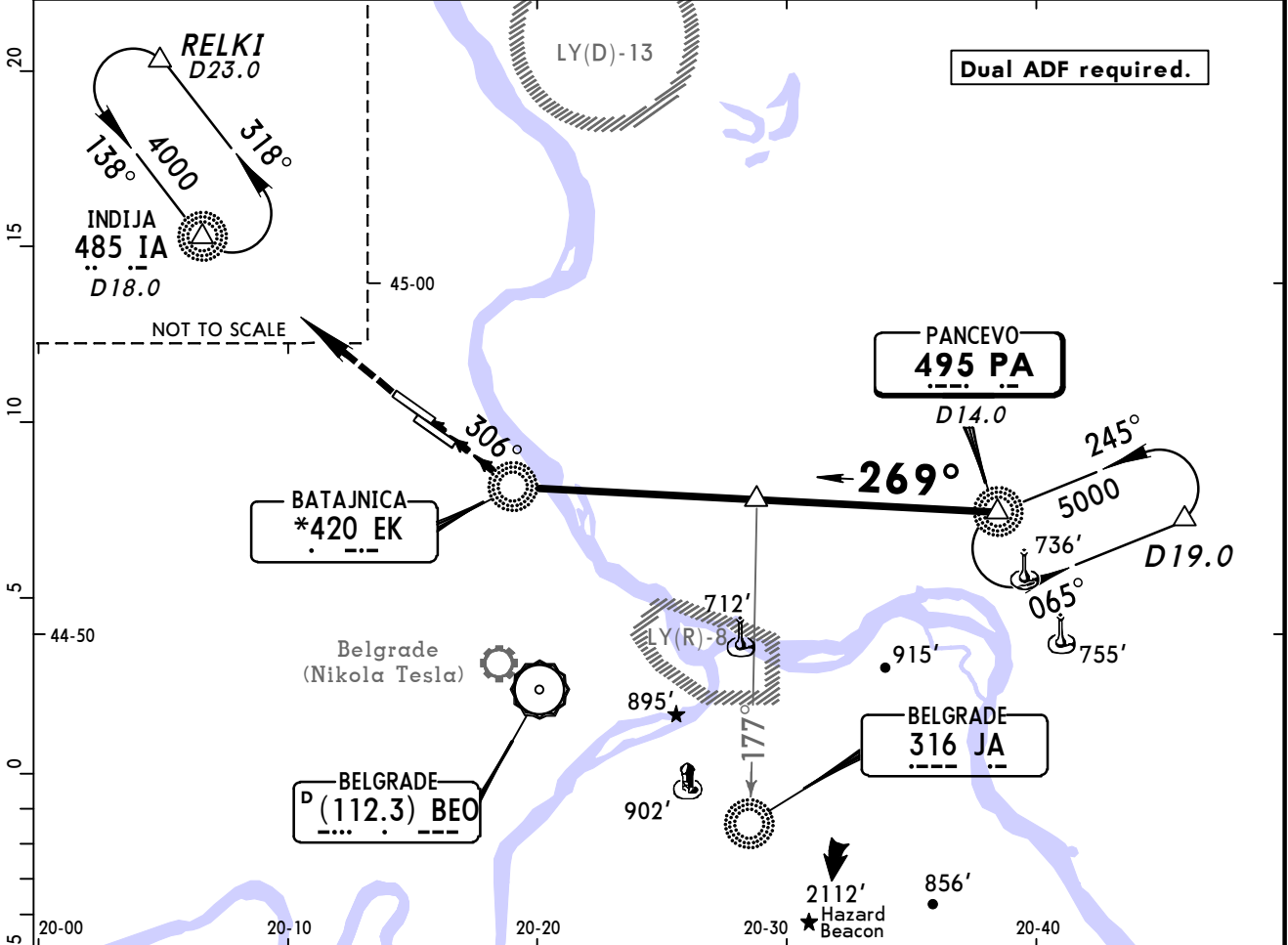
Gnd speed-Kts	70	90	100	120	140	160
Descent Angle 2.50°	310	398	442	531	619	707
LOM to MAP	2.2	1:53	1:28	1:19	1:06	0:50

HIALS  
VASI: VASI

**700'** ↑  
**5000'** ↙ LT  
PA **495**

<b>PANS OPS</b>	<b>Standard</b> STRAIGHT-IN LANDING RWY 12L		CIRCLE-TO-LAND TO RWY 30R Not authorized Southwest of airport	
	DA(H) <b>640' (375')</b>		Max Kts.	MDA(H) VIS
	ALS out		100	<b>690' (409')</b> 1700m
	A		135	<b>790' (509')</b> 1700m
	B		180	<b>890' (609')</b> 2400m
C	RVR 1300m	RVR 1700m	205	<b>990' (709')</b> 3600m
D				

BATAJNICA Approach <b>126.05</b>			BATAJNICA Tower <b>118.2</b>		
NDB PA <b>495</b>	Final Apch Crs <b>269°</b>	Minimum Alt <b>177° JA Lctr</b> <b>3400'</b> (3119')	MDA(H) Refer to Minimums	Apt Elev <b>281'</b>	
MISSED APCH: Turn RIGHT climbing to IA NDB to 4000' and hold.					
Alt Set: hPa	Apt Elev: 10 hPa	Trans level: By ATC	Trans alt: 10000'		



Gnd speed-Kts	70	90	100	120	140	160	<b>4000'</b>  <b>IA 485</b>
Descent Angle 3.00°	372	478	531	637	743	849	
MAP at EK Lctr							

PANS OPS	<b>Standard</b>		CIRCLE-TO-LAND	
		Max Kts	MDA(H)	VIS
	A	100	<b>690'</b> (409')	1500m
	B	135	<b>790'</b> (509')	1600m
	C	180	<b>890'</b> (609')	2400m
	D	205	<b>990'</b> (709')	3600m