

General Information

Location: Nis Scg
IATA Code: INI
Lat/Long: N43° 20.2' E021° 51.2'
Elevation: 650 ft

Airport Use: Public
Magnetic Variation: 4.3°E

Fuel Types: 100 Octane (LL), Jet A-1
Customs: Yes
Airport Type: IFR
Landing Fee: Yes
Control Tower: Yes
Jet Start Unit: No
LLWS Alert: No
Beacon: No

Sunrise: 0331 Z
Sunset: 1730 Z,

Runway Information

Runway: 11
Length x Width: 8202 ft x 148 ft
Surface Type: asphalt
TDZ-Elev: 642 ft
Lighting: Edge, ALS
Displaced Threshold: 719 ft

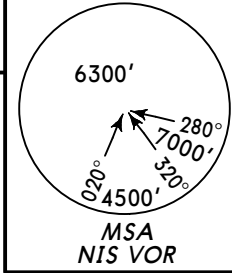
Runway: 29
Length x Width: 8202 ft x 148 ft
Surface Type: asphalt
TDZ-Elev: 648 ft
Lighting: Edge, ALS
Displaced Threshold: 984 ft

Communication Information

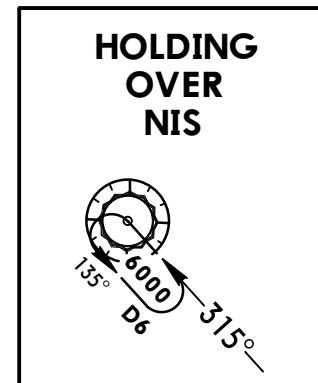
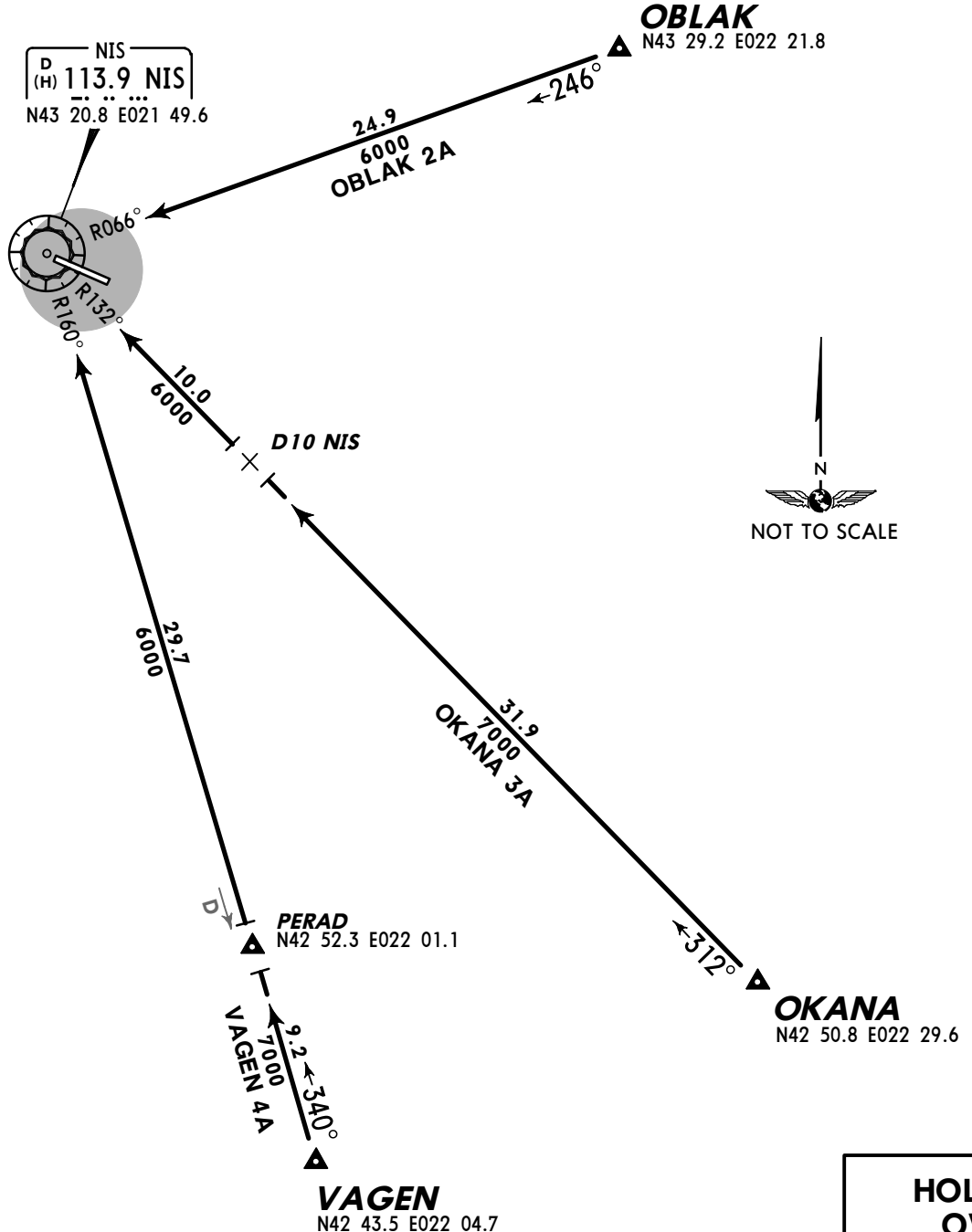
Nis Tower 136.075 Secondary VHF-DF
Nis Tower 118.95 VHF-DF
Nis Approach Control 136.075 Secondary VHF-DF
Nis Approach Control 119.525 VHF-DF

Apt Elev
650'

Alt Set: hPa Trans level: By ATC Trans alt: 10000'

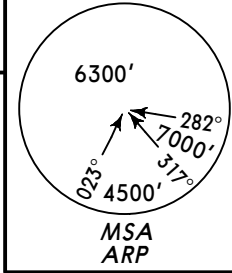


OBLAK 2A [OBLA2A], OKANA 3A [OKAN3A]
VAGEN 4A [VAGE4A]
RWY 11 ARRIVALS
SPEED: MAX 250 KT BELOW 10000'



Apt Elev
650'

Alt Set: hPa Trans level: By ATC Trans alt: 10000'

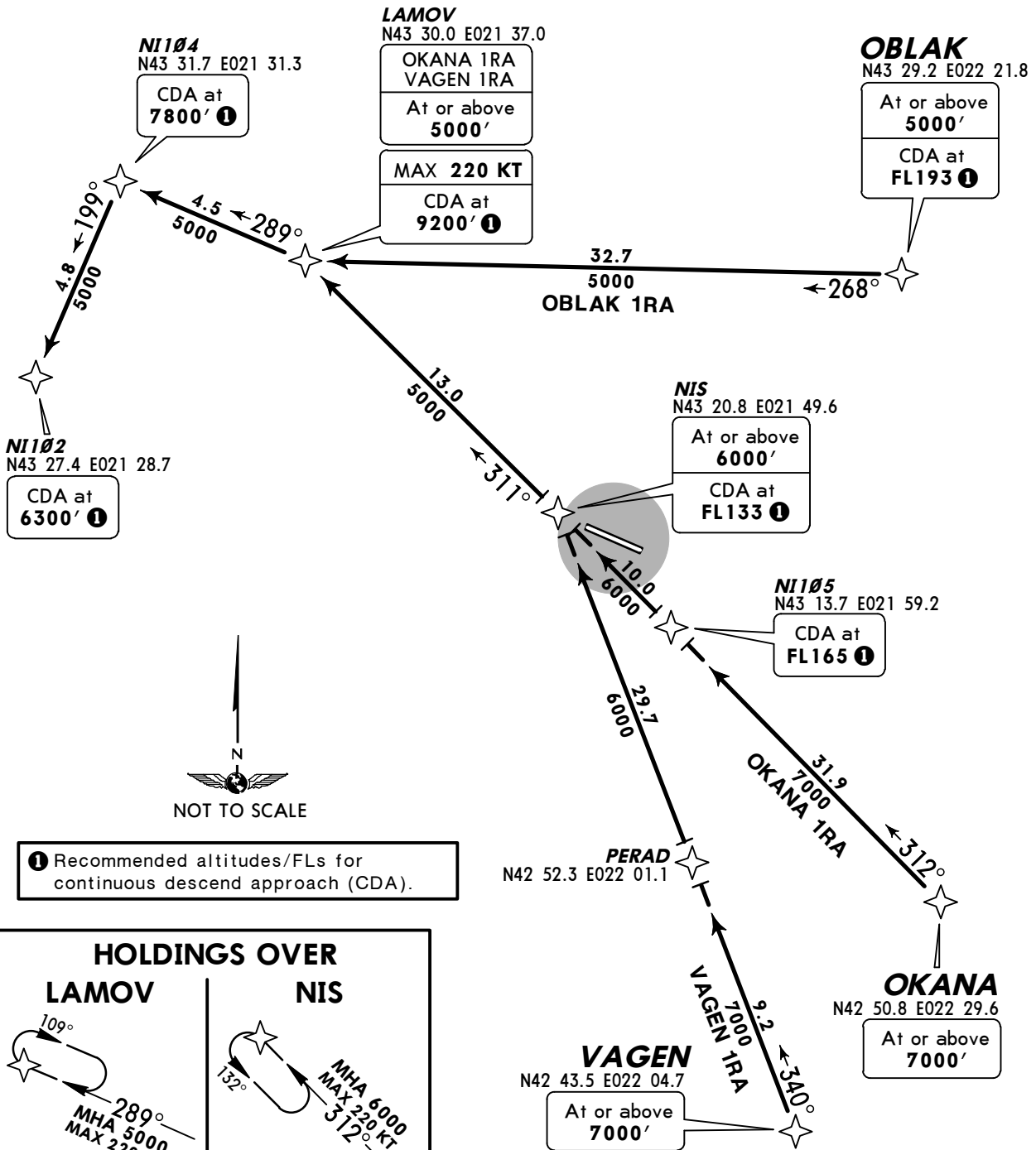


OBLAK 1RA [OBL1RA], OKANA 1RA [OKA1RA]
VAGEN 1RA [VAG1RA]
RWY 11 RNAV ARRIVALS
RNAV (GNSS)

Basic RNP-1 APPROVAL REQUIRED
BY ATC

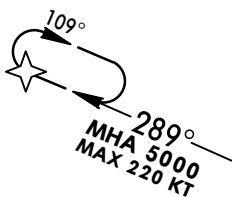
SPEED MAX 250 KT BELOW 10000'

**PROCEDURES
ON TRIAL BASIS**

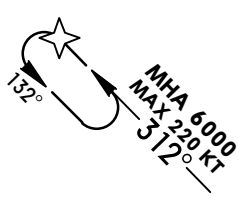


HOLDINGS OVER

LAMOV



NIS



STAR

ROUTING

OBLAK 1RA

OBLAK (5000+/CDA FL193 ①) - LAMOV (CDA 9200' ①; K220-) - NI104 (CDA 7800' ①) - NI102 (CDA 6300' ①).

OKANA 1RA

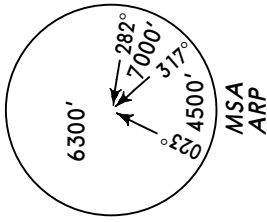
OKANA (7000'+) - NI105 (CDA FL165 ①) - NIS (6000'+/CDA FL133 ①) - LAMOV (5000'+/CDA 9200' ①; K220-) - NI104 (CDA 7800' ①) - NI102 (CDA 6300' ①).

VAGEN 1RA

VAGEN (7000'+) - PERAD - NIS (6000'+/CDA FL133 ①) - LAMOV (5000'+/CDA 9200' ①; K220-) - NI104 (CDA 7800' ①) - NI102 (CDA 6300' ①).

Apt Elev
650'

Alt Set: hPa Trans level: By ATC Trans alt: 10000'



RAMAP 1RA [RAM1RA], SOSEK 1RA [SOS1RA]

RWY 11 RNAV ARRIVALS

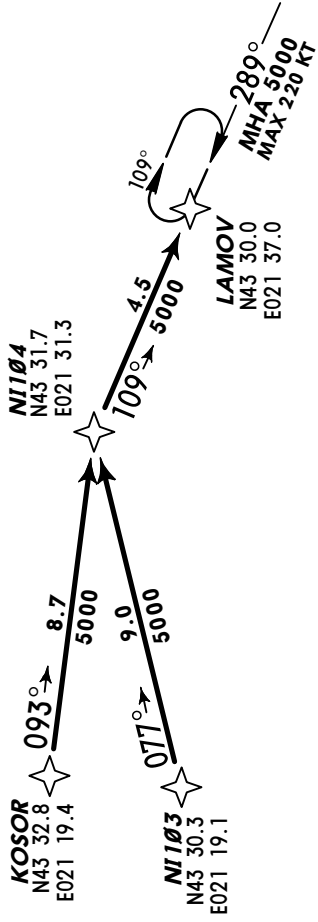
RNAV (GNSS)

Basic RNP-1 APPROVAL REQUIRED

BY ATC

SPEEDS MAX 250 KT BELOW 10000'

ROUTINGS TO LAMOV HOLDING



PROCEDURES ON TRIAL BASIS

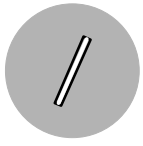
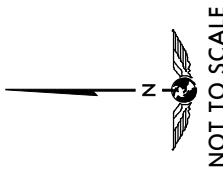
SOSEK
N43 46.8 E020 57.3
At or above
5500'
CDA at
FL155

KOSOR
N43 32.8 E021 19.4
CDA at
9000'

NI102
N43 27.4 E021 28.7
MAX 220 KT
At or above
5000'
CDA at
6300'

RAMAP
N43 25.1 E020 53.5
At or above
5500'
CDA at
FL150

NI103
N43 30.3 E021 19.1
CDA at
8700'



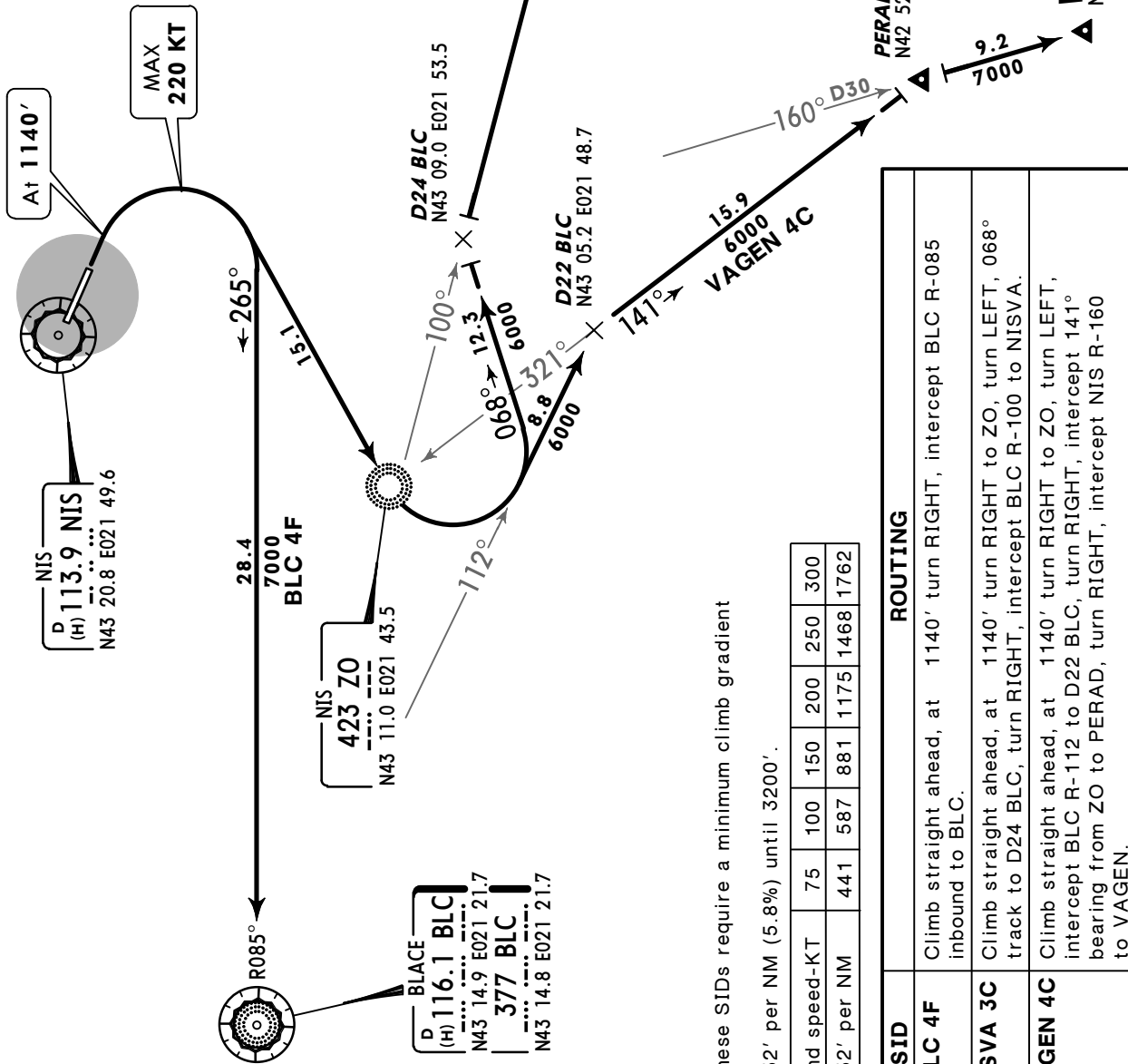
Recommended altitudes/FLs for continuous descend approach (CDA).

STAR	ROUTING
RAMAP 1RA	RAMAP (5500+/CDA FL150) - NI103 (CDA 8700') - NI102 (5000'+/CDA 6300'; K220-).
SOSEK 1RA	SOSEK (5500+/CDA FL155) - KOSOR (CDA 9000') - NI102 (5000'+/CDA 6300'; K220-).

Apt Elev
650'

Trans level: By ATC Trans alt: 10000'

BLACE FOUR FOXTROT (BLC 4F)
NISVA THREE CHARLIE
(NISVA 3C) [NISV3C]
VAGEN FOUR CHARLIE
(VAGEN 4C) [VAGE4C]
RWY 11 DEPARTURES
~~SPEED~~ MAX 250 KT BELOW 10000'



These SIDs require a minimum climb gradient of 352' per NM (5.8%) until 3200'.

Gnd speed-KT	75	100	150	200	250	300
352' per NM	441	587	881	1175	1468	1762

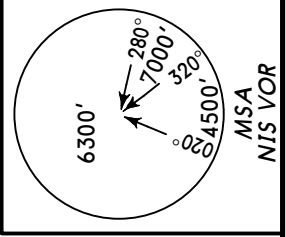
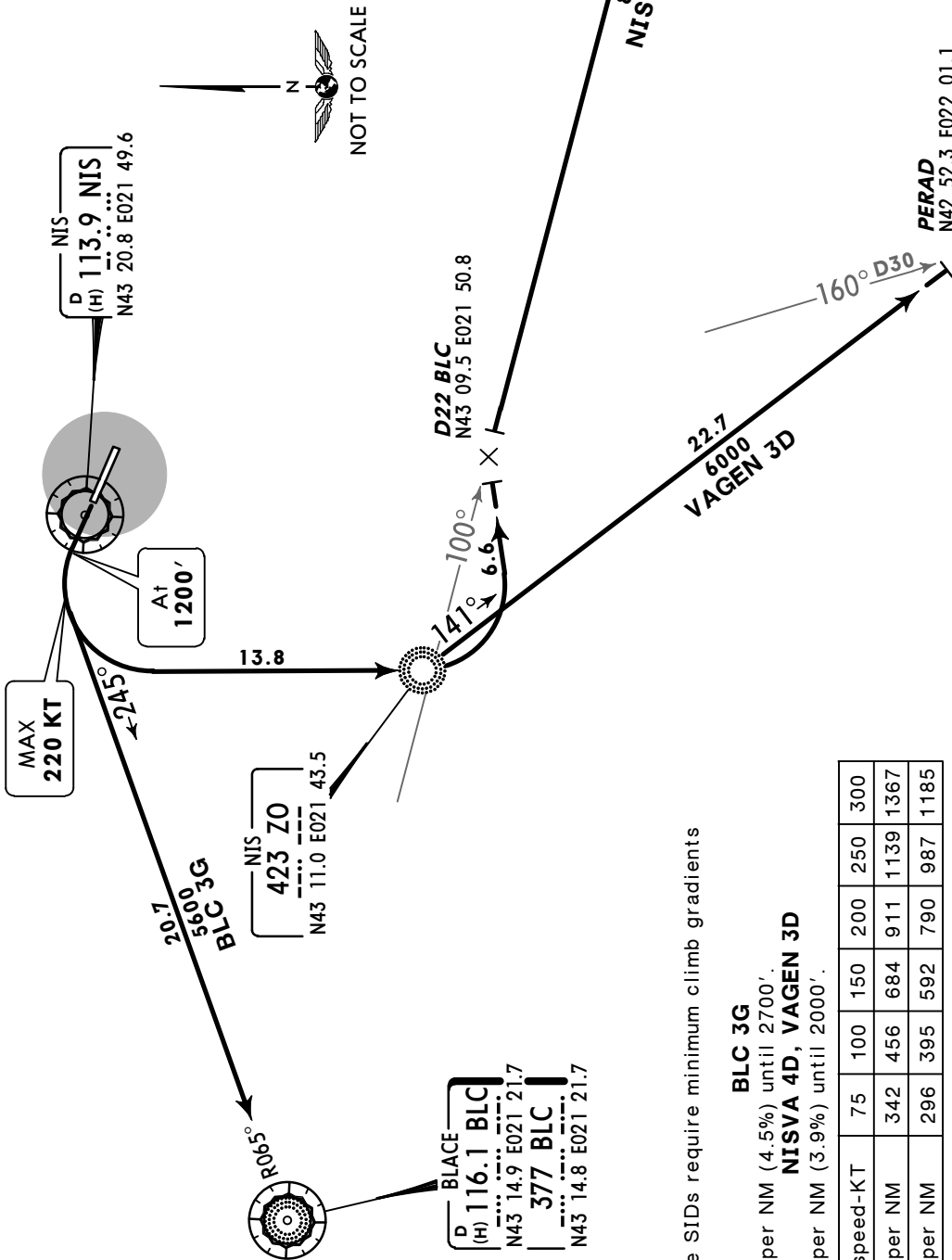
SID	ROUTING
BLC 4F	Climb straight ahead, at 1140' turn RIGHT, intercept BLC R-085 inbound to BLC.
NISVA 3C	Climb straight ahead, at 1140' turn RIGHT to ZO, turn LEFT, 068° track to D24 BLC, turn RIGHT, intercept BLC R-100 to NISVA.
VAGEN 4C	Climb straight ahead, at 1140' turn RIGHT to ZO, turn LEFT, intercept BLC R-112 to D22 BLC, turn RIGHT, intercept 141° bearing from ZO to PERAD, turn RIGHT, intercept NIS R-160 to VAGEN.

Apt Elev
650'

Trans level: By ATC Trans alt: 10000'

BLACE THREE GOLF (BLC 3G)
NISVA FOUR DELTA
(NISVA 4D) [NISV4D]
VAGEN THREE DELTA
(VAGEN 3D) [VAGE3D]
RWY 29 DEPARTURES

SPEEDS MAX 250 KT BELOW 10000'



These SIDs require minimum climb gradients of

BLC 3G
273' per NM (4.5%) until 2700'.

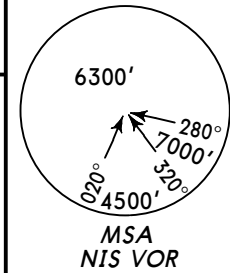
NISVA 4D, VAGEN 3D
237' per NM (3.9%) until 2000'.

Gnd speed-KT	75	100	150	200	250	300
273' per NM	342	456	684	911	1139	1367
237' per NM	296	395	592	790	987	1185

SID	ROUTING
BLC 3G	Climb straight ahead, at 1200' turn LEFT, intercept BLC R-065 inbound to BLC.
NISVA 4D	Climb straight ahead, at 1200' turn LEFT to ZO, turn LEFT, intercept BLC R-100 to NISVA.
VAGEN 3D	Climb straight ahead, at 1200' turn LEFT to ZO, turn LEFT, 141° bearing to PERAD, turn RIGHT, intercept NIS R-160 to VAGEN.

Apt Elev
650'

Trans level: By ATC Trans alt: 10000'



KRALJEVO THREE CHARLIE (VTN 3C)
RAVAK FOUR FOXTROT (RAVAK 4F) [RAVA4F]
RAVAK THREE GOLF (RAVAK 3G) [RAVA3G]
RWY 11 DEPARTURES
SPEED MAX 250 KT BELOW 10000'



TOPOLA
D (H) 116.8 TPL
N44 08.6 E020 44.7

KRALJEVO
468 VTN
N43 43.1 E020 48.6

KOSOR
N43 32.8 E021 19.4

RAVAK
N43 41.2 E021 37.6

NIS
405 JST
N43 25.5 E021 37.9

NIS
D (H) 113.9 NIS
N43 20.8 E021 49.6

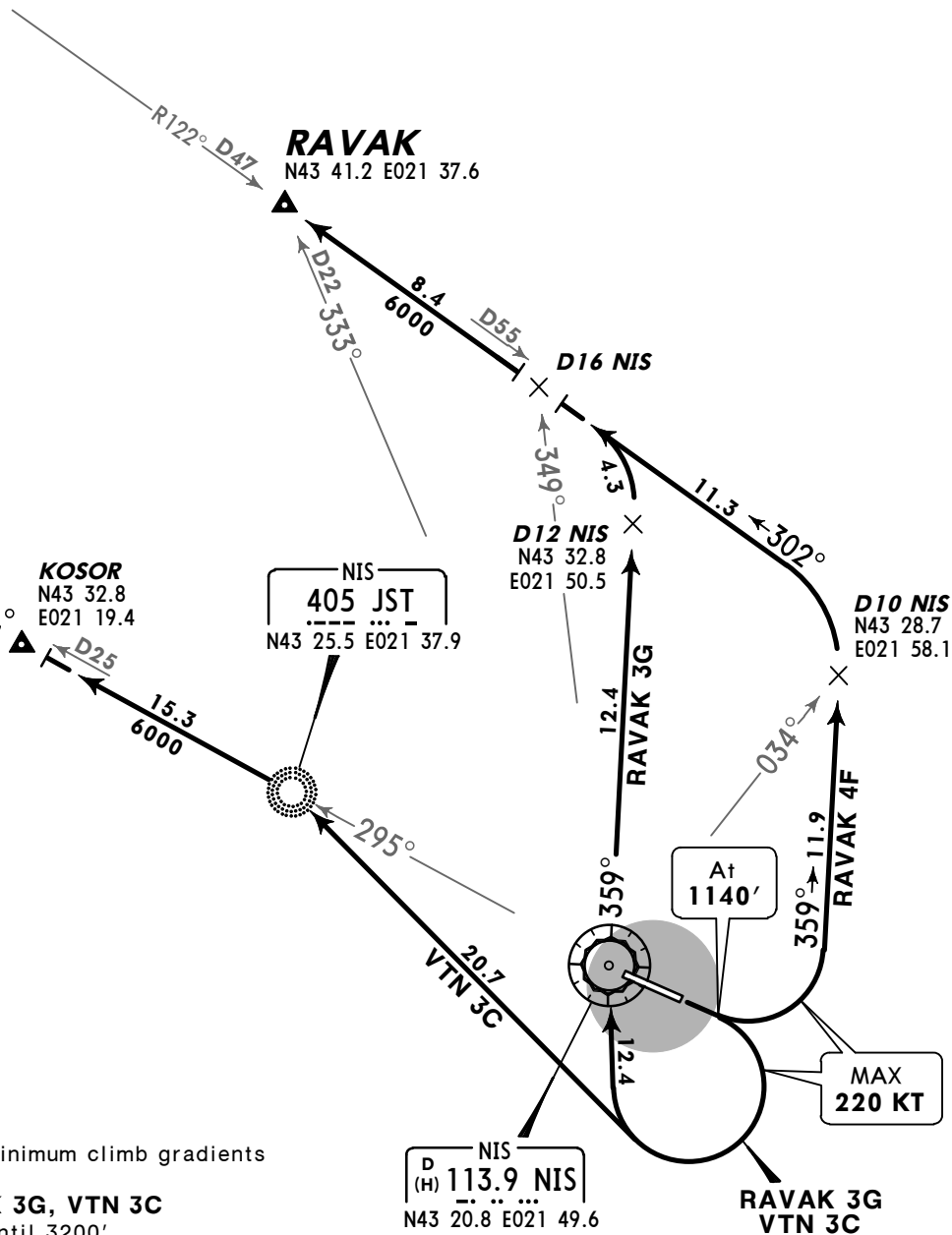


These SIDs require minimum climb gradients of

RAVAK 3G, VTN 3C
352' per NM (5.8%) until 3200'.

RAVAK 4F
389' per NM (6.4%) until 3200'.

Gnd speed-KT	75	100	150	200	250	300
389' per NM	486	648	972	1296	1620	1944
352' per NM	441	587	881	1175	1468	1762



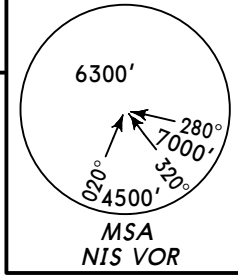
SID

ROUTING

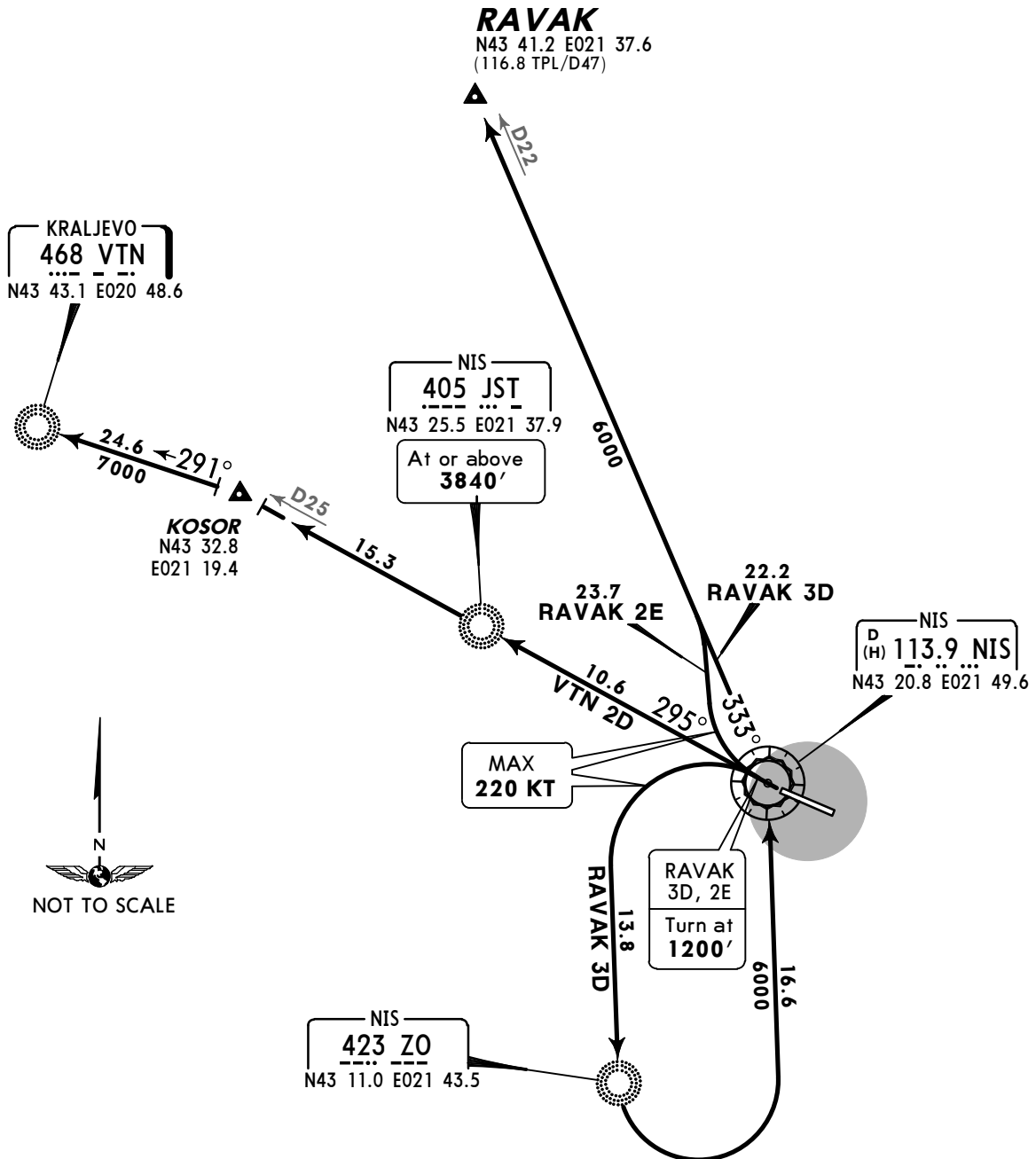
RAVAK 4F	Climb straight ahead, at 1140' turn LEFT, 359° track, at D10 NIS turn LEFT, intercept TPL R-122 inbound to RAVAK.
RAVAK 3G	Climb straight ahead, at 1140' turn RIGHT to NIS, NIS R-359 to D12 NIS, turn LEFT, intercept TPL R-122 inbound to RAVAK.
VTN 3C	Climb straight ahead, at 1140' turn RIGHT to JST, turn LEFT, intercept NIS R-295 to KOSOR, intercept 291° bearing to VTN.

Apt Elev
650'

Trans level: By ATC Trans alt: 10000'



KRALJEVO TWO DELTA (VTN 2D)
RAVAK THREE DELTA (RAVAK 3D) [RAVA3D]
RAVAK TWO ECHO (RAVAK 2E) [RAVA2E]
RWY 29 DEPARTURES
~~SPEED~~ MAX 250 KT BELOW 10000'



These SIDs require minimum climb gradients of

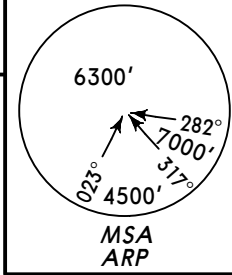
RAVAK 3D, VTN 2D
304' per NM (5%) until 3840',
RAVAK 2E
237' per NM (3.9%) until 2000'.

Gnd speed-KT	75	100	150	200	250	300
304' per NM	380	506	760	1013	1266	1519
237' per NM	296	395	592	790	987	1185

SID	ROUTING
RAVAK 3D	Climb straight ahead, at 1200' turn LEFT to ZO, turn LEFT to NIS, NIS R-333 to RAVAK.
RAVAK 2E	Climb straight ahead, at 1200' turn RIGHT, intercept NIS R-333 to RAVAK.
VTN 2D	Climb on NIS R-295 to KOSOR, intercept 291° bearing to VTN.

Apt Elev
650'

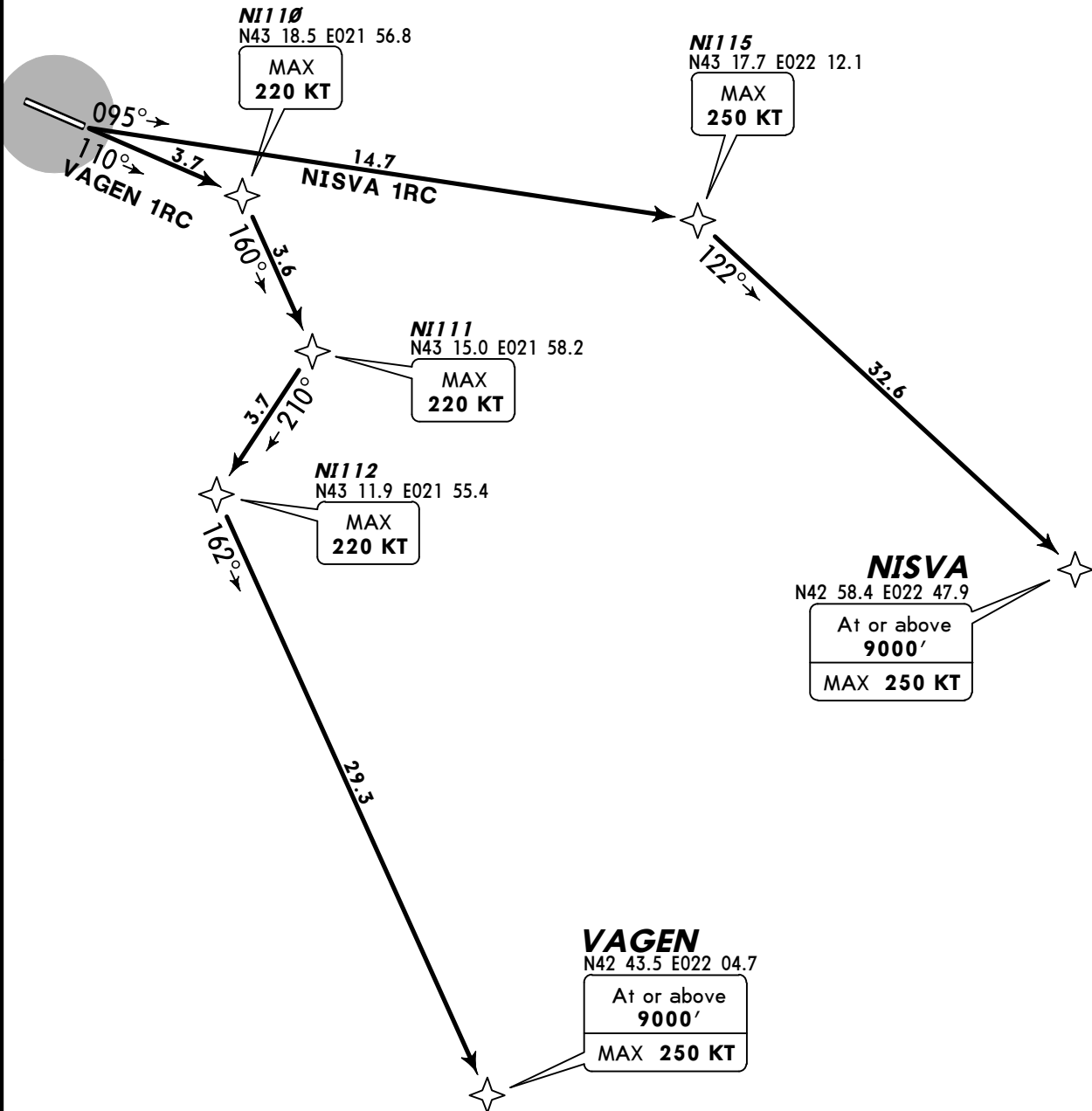
Trans level: By ATC Trans alt: 10000'



NISVA 1RC [NIS1RC], VAGEN 1RC [VAG1RC]
RWY 11 RNAV DEPARTURES
RNAV (GNSS)
Basic RNP-1 APPROVAL REQUIRED
BY ATC

SPEEDS MAX 250 KT BELOW 10000'

PROCEDURES ON TRIAL BASIS



These SIDs require minimum climb gradient of

- NISVA 1RC:** 4.2% up to 2800'.
- VAGEN 1RC:** 6.1% up to 3400'.

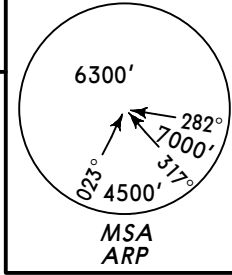
Gnd speed-KT	75	100	150	200	250	300
4.2% V/V (fpm)	319	425	638	851	1063	1276
6.1% V/V (fpm)	463	618	927	1235	1544	1853



SID	ROUTING
NISVA 1RC	NI115 (K250-) - NISVA (9000'+; K250-).
VAGEN 1RC	NI110 (K220-) - NI111 (K220-) - NI112 (K220-) - VAGEN (9000'+; K250-).

Apt Elev
650'

Trans level: By ATC Trans alt: 10000'

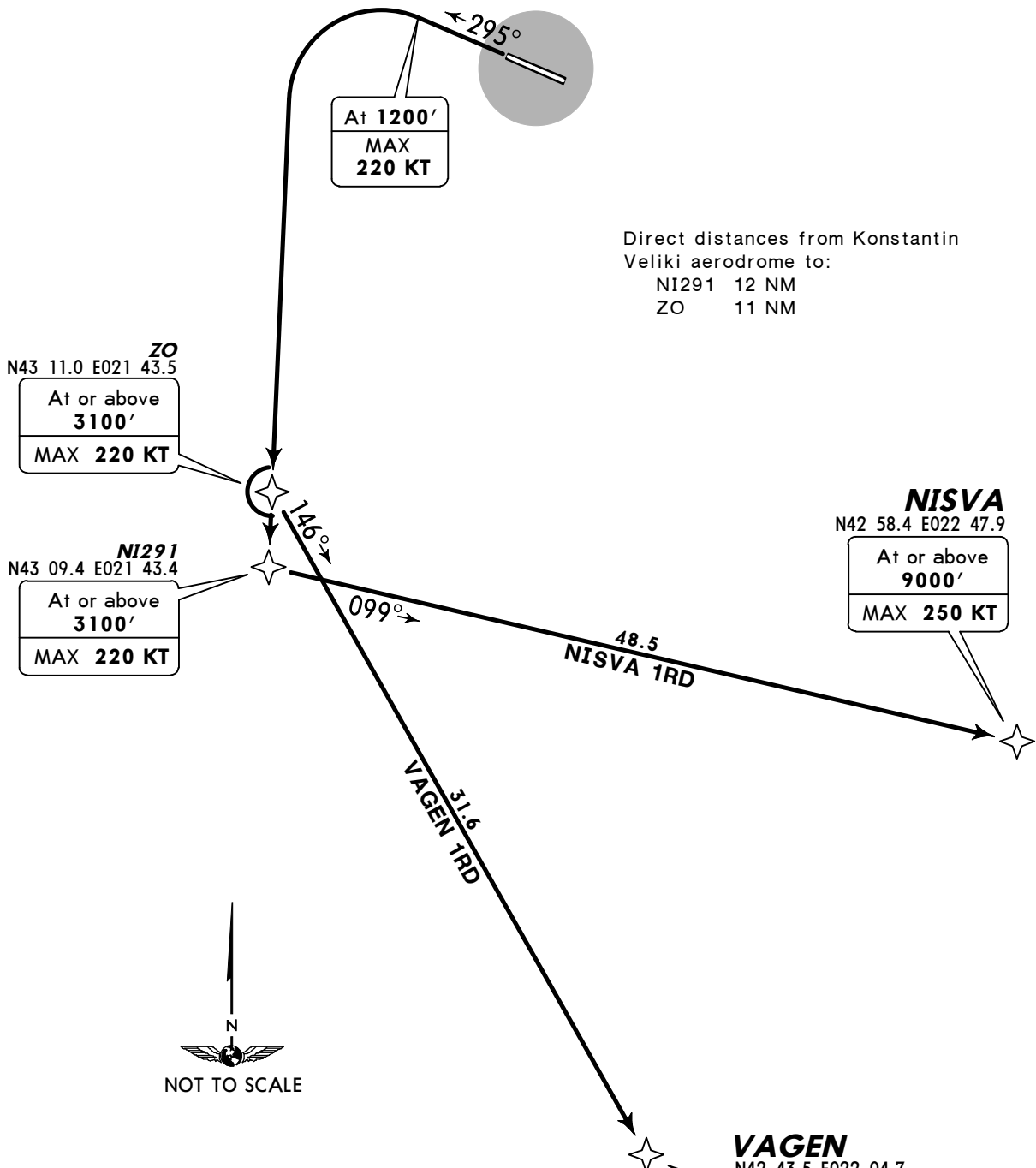


NISVA 1RD [NIS1RD], VAGEN 1RD [VAG1RD]
RWY 29 RNAV DEPARTURES

RNAV (GNSS)
Basic RNP-1 APPROVAL REQUIRED
BY ATC

~~SPEEDS~~ MAX 250 KT BELOW 10000'

PROCEDURES
ON TRIAL BASIS



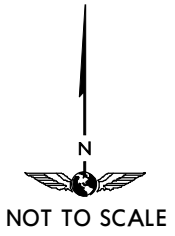
Direct distances from Konstantin Veliki aerodrome to:
NI291 12 NM
ZO 11 NM

ZO
N43 11.0 E021 43.5
At or above
3100'
MAX 220 KT

NI291
N43 09.4 E021 43.4
At or above
3100'
MAX 220 KT

NISVA
N42 58.4 E022 47.9
At or above
9000'
MAX 250 KT

VAGEN
N42 43.5 E022 04.7
At or above
9000'
MAX 250 KT



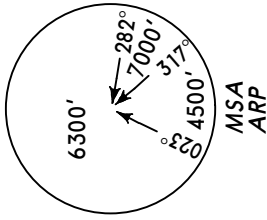
These SIDs require minimum climb gradient of 3.9% up to 2000'.

Gnd speed-KT	75	100	150	200	250	300
3.9% V/V (fpm)	296	395	592	790	987	1185

SID	ROUTING
NISVA 1RD	(1200'; K220-) - NI291 (3100'+; K220-) - NISVA (9000'+; K250-).
VAGEN 1RD	(1200'; K220-) - ZO (3100'+; K220) - VAGEN (9000'+; K250-).

Apt Elev
650'

Trans level: By ATC Trans alt: 10000'



**RAVAK 1RC [RAV1RC], RAVAK 1RD [RAV1RD]
VTN 1RC
RWY 11 RNAV DEPARTURES**

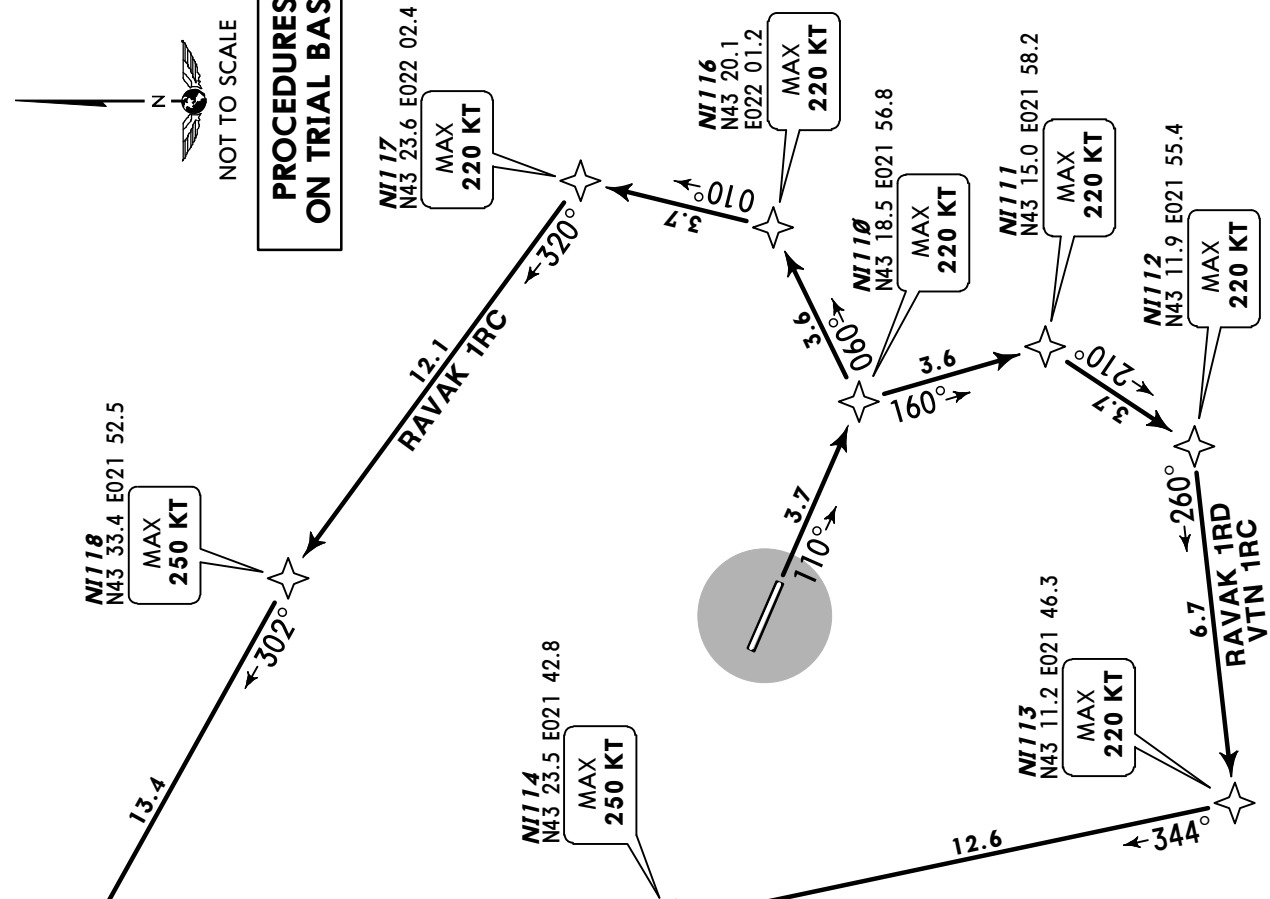
RNAV (GNSS)

Basic RNP-1 APPROVAL REQUIRED

BY ATC

SPEED MAX 250 KT BELOW 10000'

**PROCEDURES
ON TRIAL BASIS**



RAVAK
N43 41.2 E021 37.6
At or above
7000'
MAX 250 KT

**KRALJEVO
468 VTN**
N43 43.1 E020 48.6
At or above
7000'
MAX 250 KT

KOSOR
N43 32.8 E021 19.4
At or above
6600'
MAX 250 KT

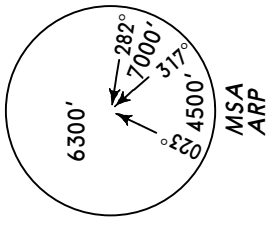
These SIDs require minimum climb gradient of
**RAVAK 1RC: 5.9% up to 3100'.
RAVAK 1RD, VTN 1RC: 6.1% up to 3400'.**

Gnd speed-KT	75	100	150	200	250	300
5.9% V/V (fpm)	448	597	896	1195	1494	1792
6.1% V/V (fpm)	463	618	927	1235	1544	1853

SID	ROUTING
RAVAK 1RC	NI110 (K220-) - NI116 (K220-) - NI117 (K220-) - NI118 (K250-) - RAVAK (7000'+; K250-).
RAVAK 1RD	NI110 (K220-) - NI111 (K220-) - NI112 (K220-) - NI113 (K220-) - NI114 (K250-) - RAVAK (7000'+; K250-).
VTN 1RC	NI110 (K220-) - NI111 (K220-) - NI112 (K220-) - NI113 (K220-) - NI114 (K250-) - KOSOR (6600'+; K250-) - VTN (7000'+; K250-).

Apt Elev
650'

Trans level: By ATC Trans alt: 10000'



**RAVAK 1RE [RAVIRE], RAVAK 1RF [RAV1RF]
VTN 1RD
RWY 29 RNAV DEPARTURES
RNAV (GNSS)**

Basic RNP-1 APPROVAL REQUIRED
BY ATC

SPEEDS MAX 250 KT BELOW 10000'

PROCEDURES ON TRIAL BASIS

Direct distance from Konstantin
Veliki aerodrome to NI292: 13 NM

KRALJEVO
468 VTN
N43 43.1 E020 48.6
At or above
7000'
MAX **250 KT**

RAVAK
N43 41.2 E021 37.6
At or above
7000'
MAX **250 KT**

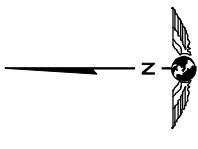
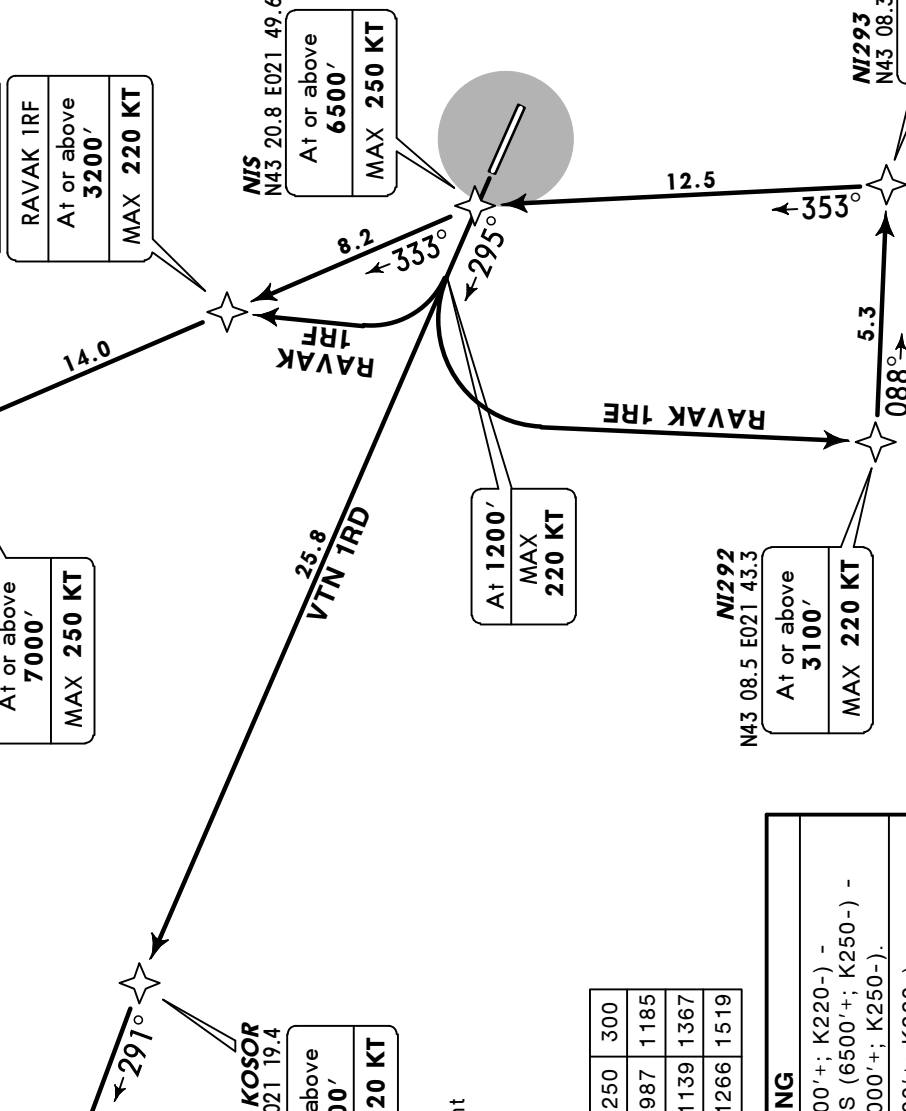
NI294
N43 28.3 E021 45.2
RAVAK 1RE
MAX **250 KT**
RAVAK 1RF
At or above
3200'
MAX **220 KT**

KOSOR
N43 32.8 E021 19.4
At or above
6600'
MAX **220 KT**

MIS
N43 20.8 E021 49.6
At or above
6500'
MAX **250 KT**

NI292
N43 08.5 E021 43.3
At or above
3100'
MAX **220 KT**

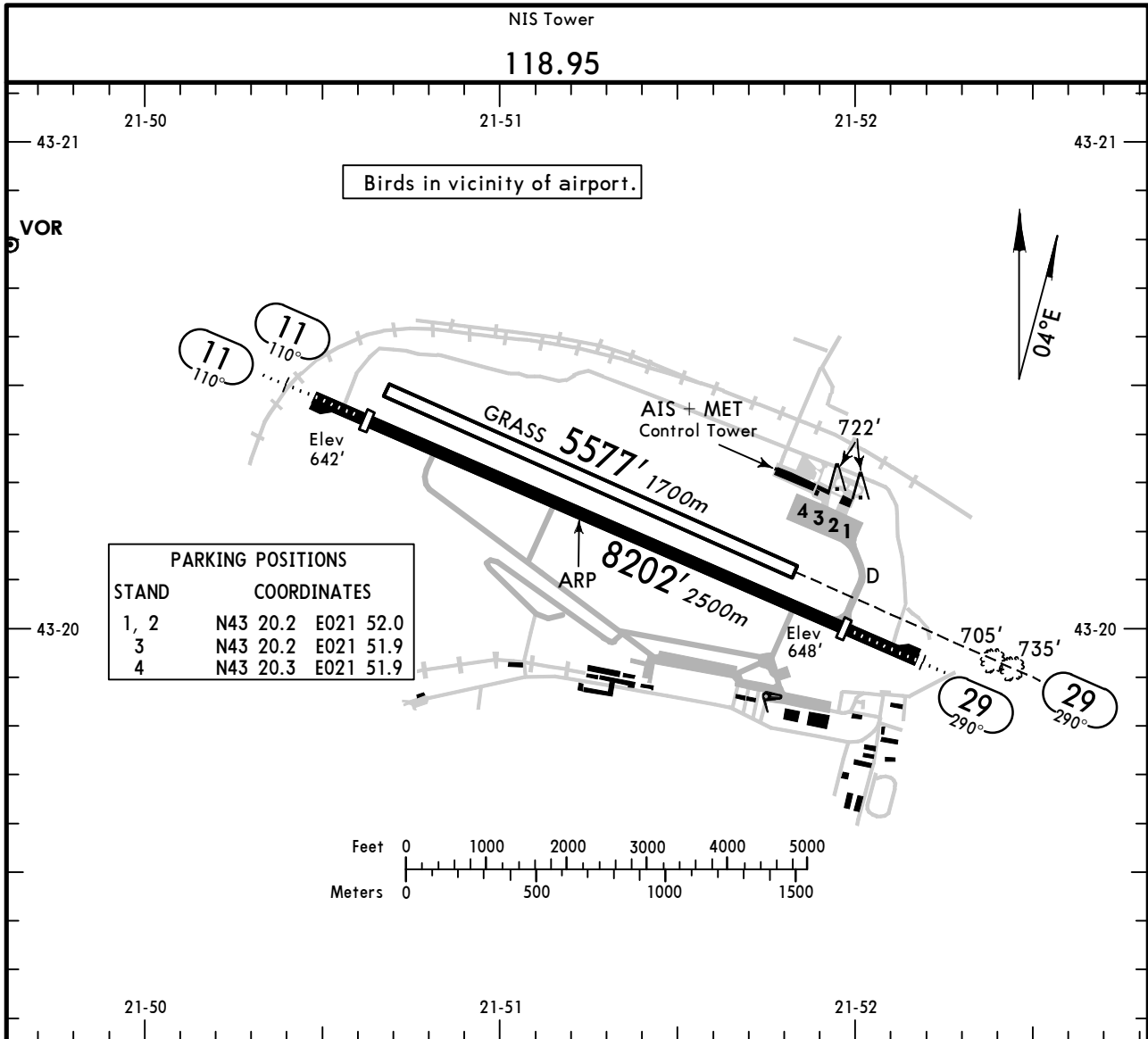
NI293
N43 08.3 E021 50.5
At or above
4100'
MAX **220 KT**



These SIDs require minimum climb gradient of
RAVAK 1RE: 3.9% up to 2000';
RAVAK 1RF: 4.5% up to 7000';
VTN 1RD: 5.0% up to 3000'.

Gnd speed-KT	75	100	150	200	250	300
3.9% V/V (fpm)	296	395	592	790	987	1185
4.5% V/V (fpm)	342	456	684	911	1139	1367
5.0% V/V (fpm)	380	506	760	1013	1266	1519

SID	ROUTING
RAVAK 1RE	(1200'; K220-) - NI292 (3100'+; K220-) - NI293 (4100'+; K220-) - NIS (6500'+; K250-) - NI294 (K250-) - RAVAK (7000'+; K250-).
RAVAK 1RF	(1200'; K220-) - NI294 (3200'+; K220-) - RAVAK (7000'+; K250-).
VTN 1RD	(1200'; K220-) - KOSOR (6600'+; K220-) - VTN (7000'+; K250-).



ADDITIONAL RUNWAY INFORMATION

RWY		USABLE LENGTHS		TAKE-OFF	WIDTH
		Threshold	Landing Beyond Glide Slope		
11 29	HIRL (60m) HIALS PAPI-L (3.5°)	7483' 2281m 7218' 2200m			148' 45m
11 29	Grass runway				164' 50m

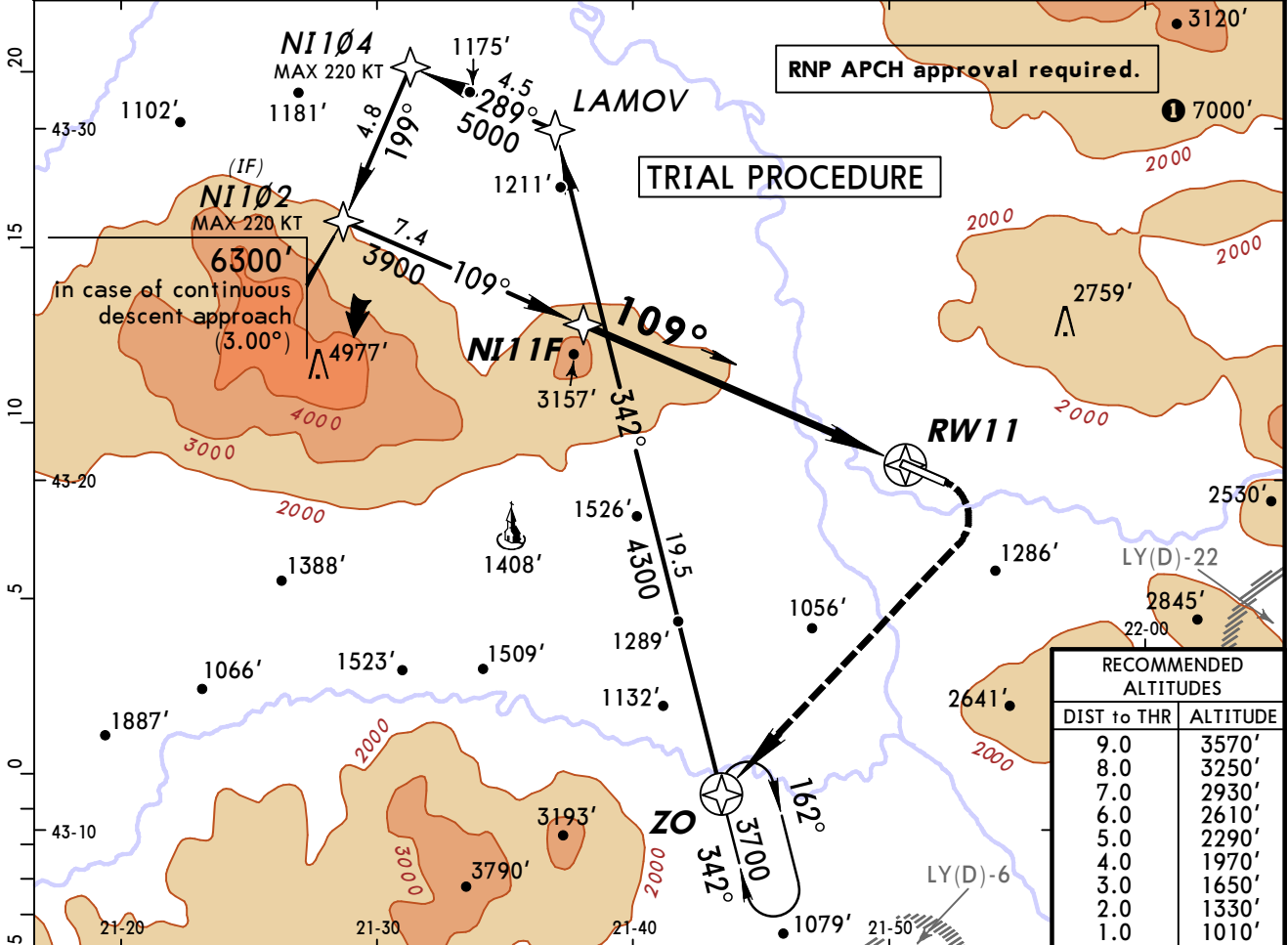
Standard

TAKE-OFF 1

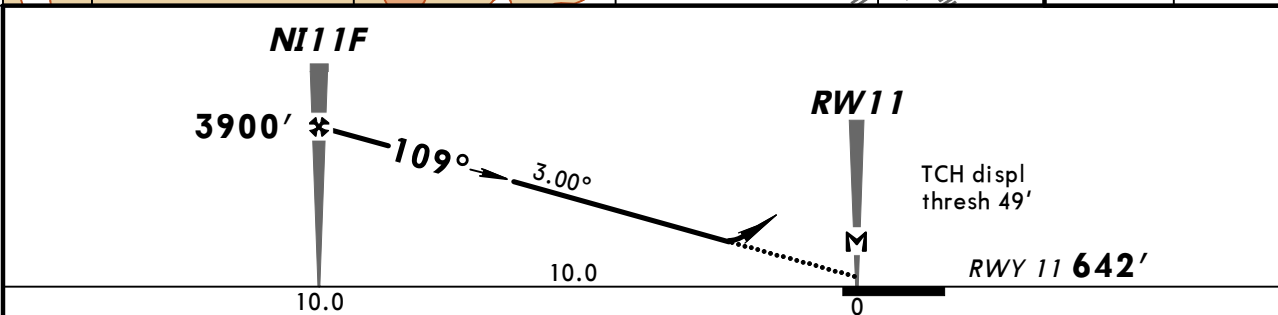
	LVP must be in force		
	RCLM (DAY only) or RL	RCLM (DAY only) or RL	NIL (DAY only)
A			
B	250m	400m	500m
C			
D	NOT APPLICABLE		

1 Operators applying U.S. Ops Specs: CL required below 300m.

NIS Approach				NIS Tower	
119.52				118.95	
RNAV	Final Apch Crs 109°	Minimum Alt NI11F 3900' (3258')	LNAV MDA(H) Refer to Minimums	Apt Elev 650'	RWY 642'
MISSED APCH: At RW11 turn RIGHT (MAX 185 KT) to ZO climbing to 3700' and hold.					<p>MSA ARP</p>
Alt Set: hPa	Rwy Elev: 23 hPa	Trans level: By ATC	Trans alt: 10000'		



RECOMMENDED ALTITUDES	
DIST to THR	ALTITUDE
9.0	3570'
8.0	3250'
7.0	2930'
6.0	2610'
5.0	2290'
4.0	1970'
3.0	1650'
2.0	1330'
1.0	1010'

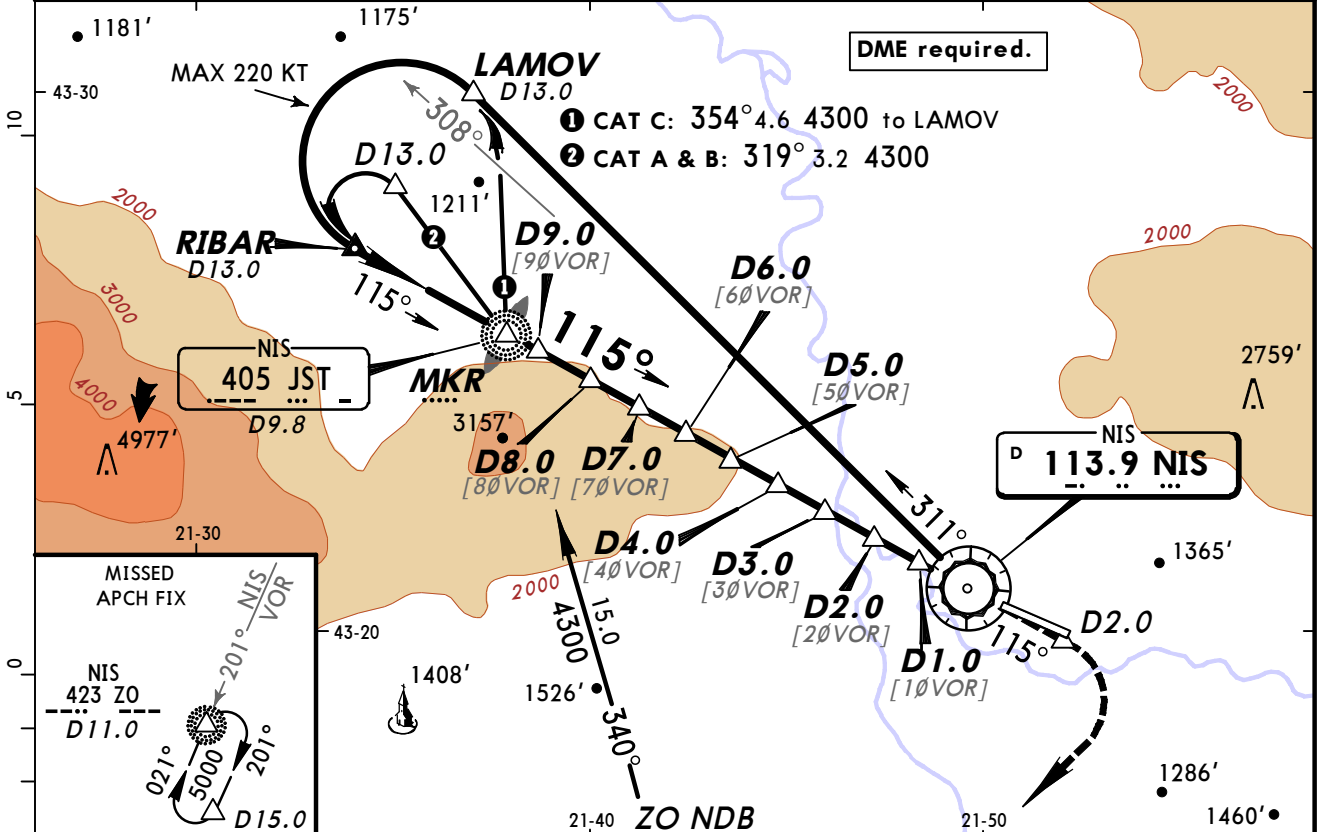


Gnd speed-Kts	70	90	100	120	140	160		185 KT MAX RT	ZO
Descent Angle 3.00°	372	478	531	637	743	849			
MAP at RW11									

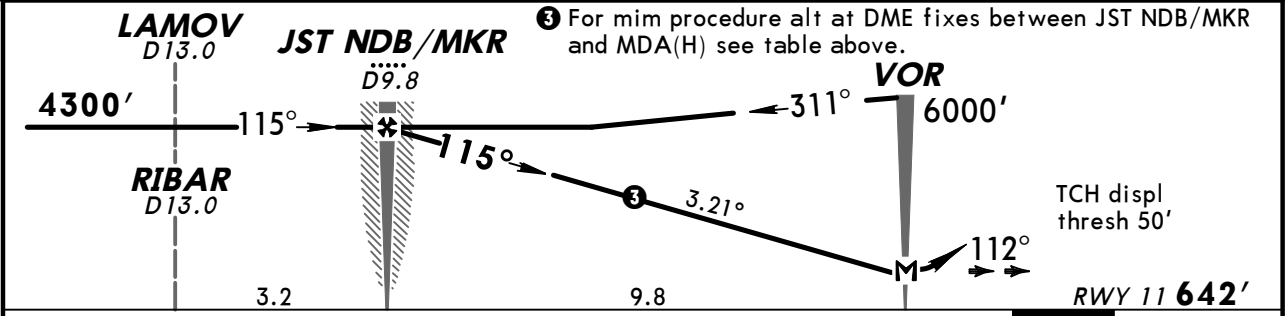
Standard				STRAIGHT-IN LANDING RWY 11				
Missed apch climb grad mim 3.5%		RNP 0.3 LNAV		Missed apch climb grad mim 2.5%				
MDA(H) 950' (308')				MDA(H) 1200' (558')				
ALS out		ALS out		ALS out		ALS out		
A					RVR 1500m			
B								
C	RVR 1000m	RVR 1400m		RVR 1500m				
D					CMV 2100m	CMV 2400m		

PANS OPS

NIS Approach 119.52				NIS Tower 118.95	
VOR NIS 113.9	Final Apch Crs 115°	Minimum Alt JST NDB/MKR 4300' (3658')	DA(H) 970' (328')	Apt Elev 650'	RWY 642'
MISSED APCH: Climb on R-115 to D2.0, then turn RIGHT (MAX 185 KT) to ZO NDB climbing to 5000' and hold.					
Alt Set: hPa	Rwy Elev: 23 hPa	Trans level: By ATC	Trans alt: 10000'		MSA NIS VOR



NIS DME	9.0	8.0	7.0	6.0	5.0	4.0	3.0	2.0	1.0
	[90VOR]	[80VOR]	[70VOR]	[60VOR]	[50VOR]	[40VOR]	[30VOR]	[20VOR]	[10VOR]
MIM PROCEDURE ALT	4030'	3690'	3350'	3010'	2670'	2330'	1990'	1650'	1310'



Gnd speed-Kts	70	90	100	120	140	160	HIALS PAPI D2.0 on 113.9 R-115
Descent Angle	3.21°	398	511	568	682	795	
MAP at VOR							

Standard	STRAIGHT-IN LANDING RWY 11	
	CDFA	
	DA(H) 970' (328')	
	ALS out	
A		
B	RVR 1100m	RVR 1500m
C	For CIRCLE-TO-LAND with prescribed flight tracks see 19-10.	
D	NOT APPLICABLE	

JAGOD
N43 58.7 E021 15.6
Town Jagodina

CICEV
N43 43.3 E021 26.5
Town Cicevac

RUTEV
N43 35.7 E021 37.7
Village Rutevac

LUZAN
N43 27.1 E021 44.6
Village Tesica

PROKU
N43 13.8 E021 35.0
Town Prokuplje

DUBOV
N43 06.5 E021 41.7
Village Dubovo

LESKO
N42 55.7 E022 01.0
Village V. Grabovnica

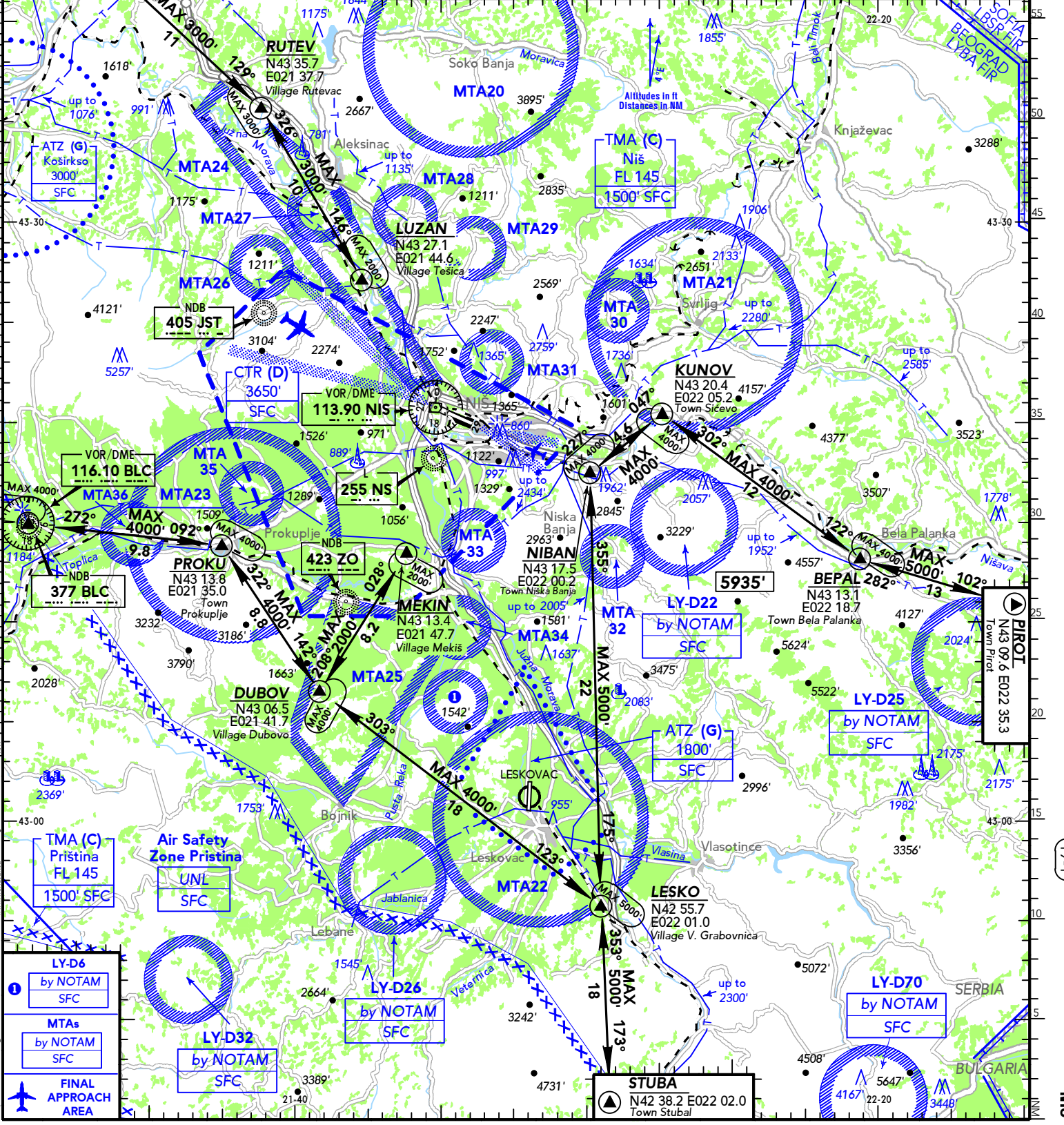
STUBA
N42 38.2 E022 02.0
Town Stubal

(APP) NIŠ APPROACH **129.32** (ser, en) by NOTAM

(TWR) NIŠ TOWER **129.32** (ser, en)

LYNI
Elev **650'**/198m
N43 20.2 E021 51.2
2.2 NM NW Niš

RWY	ILS	RWY	ILS



CHANGES: Airspace.

© JEPPESEN, 2009, 2012. ALL RIGHTS RESERVED.

© 2007 AND Data Solutions B.V. Digital Geography Europe. All rights reserved.

19-1

MS

NIŠ

19-2 17 FEB 12

JEPPESEN

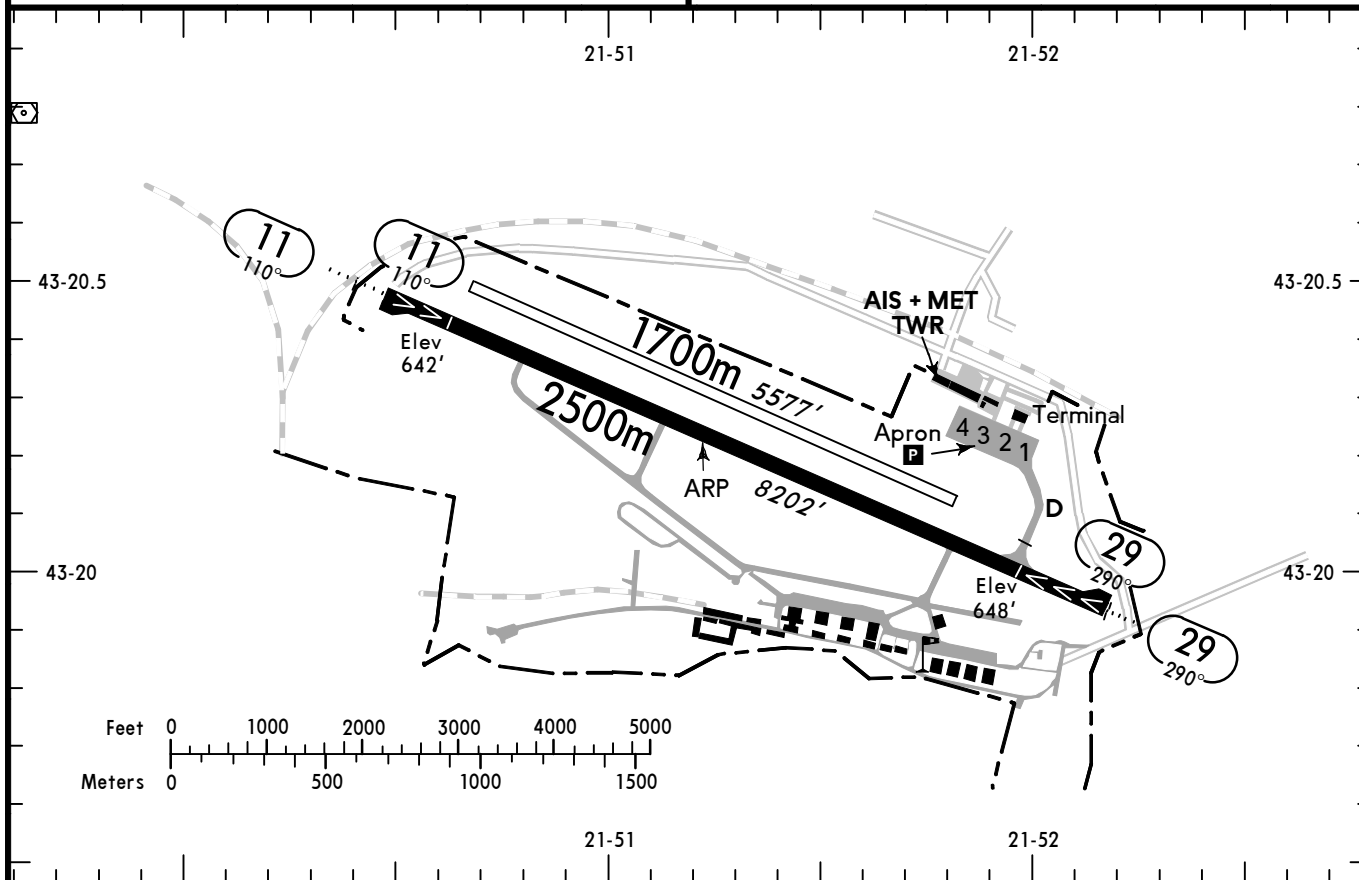
KONSTANTIN VELIKI

SERBIA



(FIS)

NIŠ APPROACH 129.32



Asphalt RWY: ALS - PAPI (3.5°) - THRL - RL - TWYL - APRON - OBSTL.

RWY No	Dimension (m) - Surface	TORA (m)	LDA (m)	Strength	Lights
11 29	2500 x 45 Asphalt	2500	2281	PCN 52/R/B/X/T ①	☉
11 29	1700 x 50 Grass	1700	1700		

① 0-500m & 2000-2500m: PCN 48/F/B/X/T

CAUTION:

Birds in vicinity of AD.

Arrivals

VFR flights shall be conducted along the routes from REPs LUZAN, MEKIN and NIBAN where further instructions and landing clearance will be given by Niš TWR.

Departures

VFR flights shall be planned according to VFR routes and comply with instructions and clearances given by Niš TWR.

Transit flights

VFR flights through CTR (D) Niš will be cleared only if traffic situation permits.

COM Failure

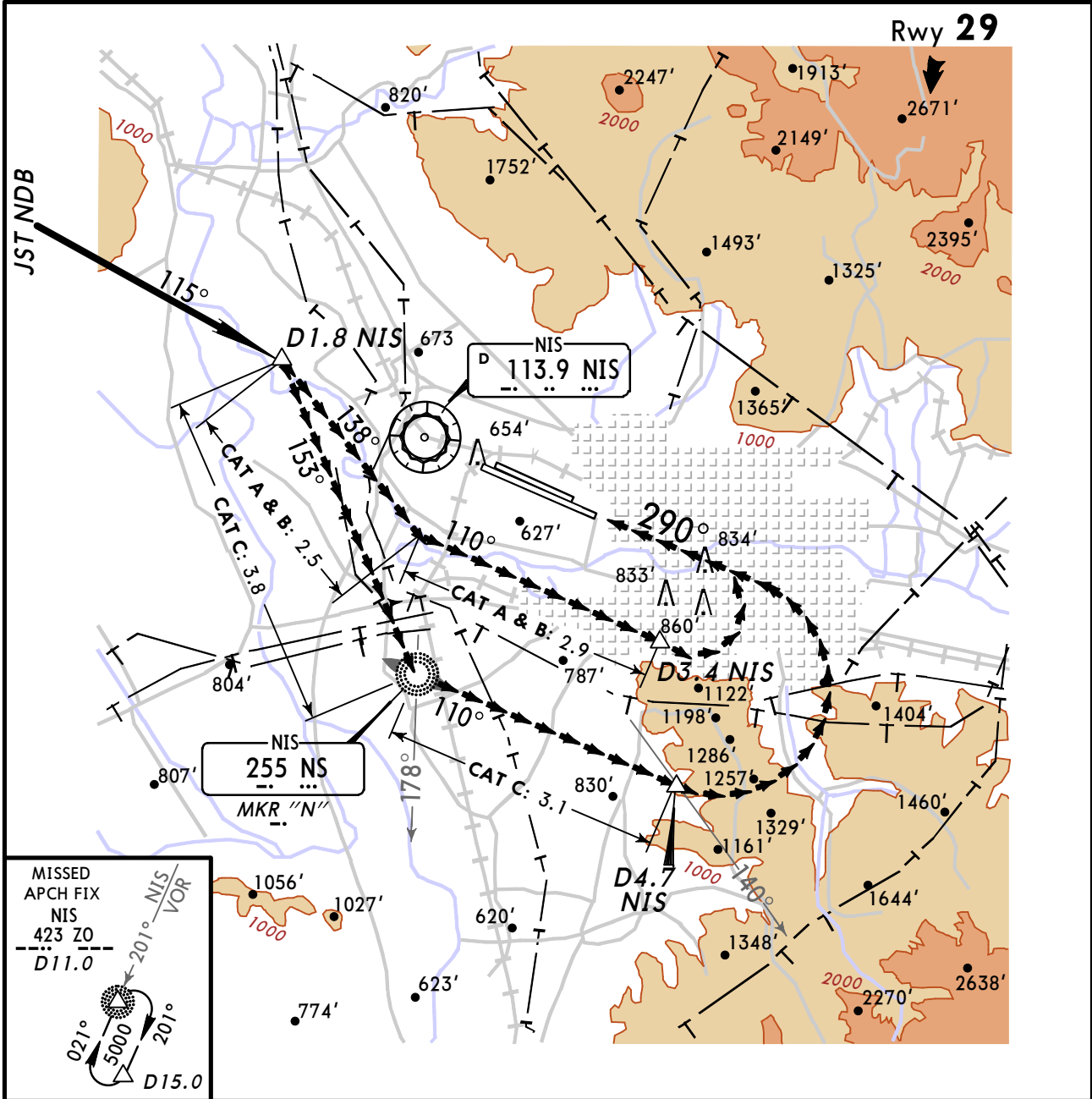
If ACFT is equipped with transponder, the pilot shall squawk SSR code A7600, return on VFR route and land at nearest uncontrolled AD.

HEL

RWY is used for TKOF & LDG.

Apt Elev 650'

CIRCLE-TO-LAND
WITH PRESCRIBED FLIGHT TRACKS



MISSED APPROACH:

If visual reference is lost before R-178 climb to ZO NDB and hold. If visual reference is lost after passing R-178 initial climbing turn toward the landing runway should be made. Overhead aerodrome proceed climbing to ZO NDB as directed.

Standard

Not authorized Northeast of apt.

	Max Kts	MDA(H)	Vis
A	100	1450' (800')	1500m
B	135	1450' (800')	1600m
C	180	1810' (1160')	2400m
D		NOT APPLICABLE	