

General Information

Location: Podgorica Scg
IATA Code: TGD
Lat/Long: N42° 21.6' E019° 15.1'
Elevation: 122 ft

Airport Use: Public
Magnetic Variation: 3.8°E

Fuel Types: 100 Octane (LL), Jet A-1
Customs: Yes
Airport Type: IFR
Landing Fee: Yes
Control Tower: Yes
Jet Start Unit: No
LLWS Alert: No
Beacon: No

Sunrise: 0343 Z
Sunset: 1738 Z,

Runway Information

Runway: 18
Length x Width: 8202 ft x 148 ft
Surface Type: asphalt
TDZ-Elev: 122 ft
Lighting: Edge, ALS

Runway: 36
Length x Width: 8202 ft x 148 ft
Surface Type: asphalt
TDZ-Elev: 98 ft
Lighting: Edge, ALS

Communication Information

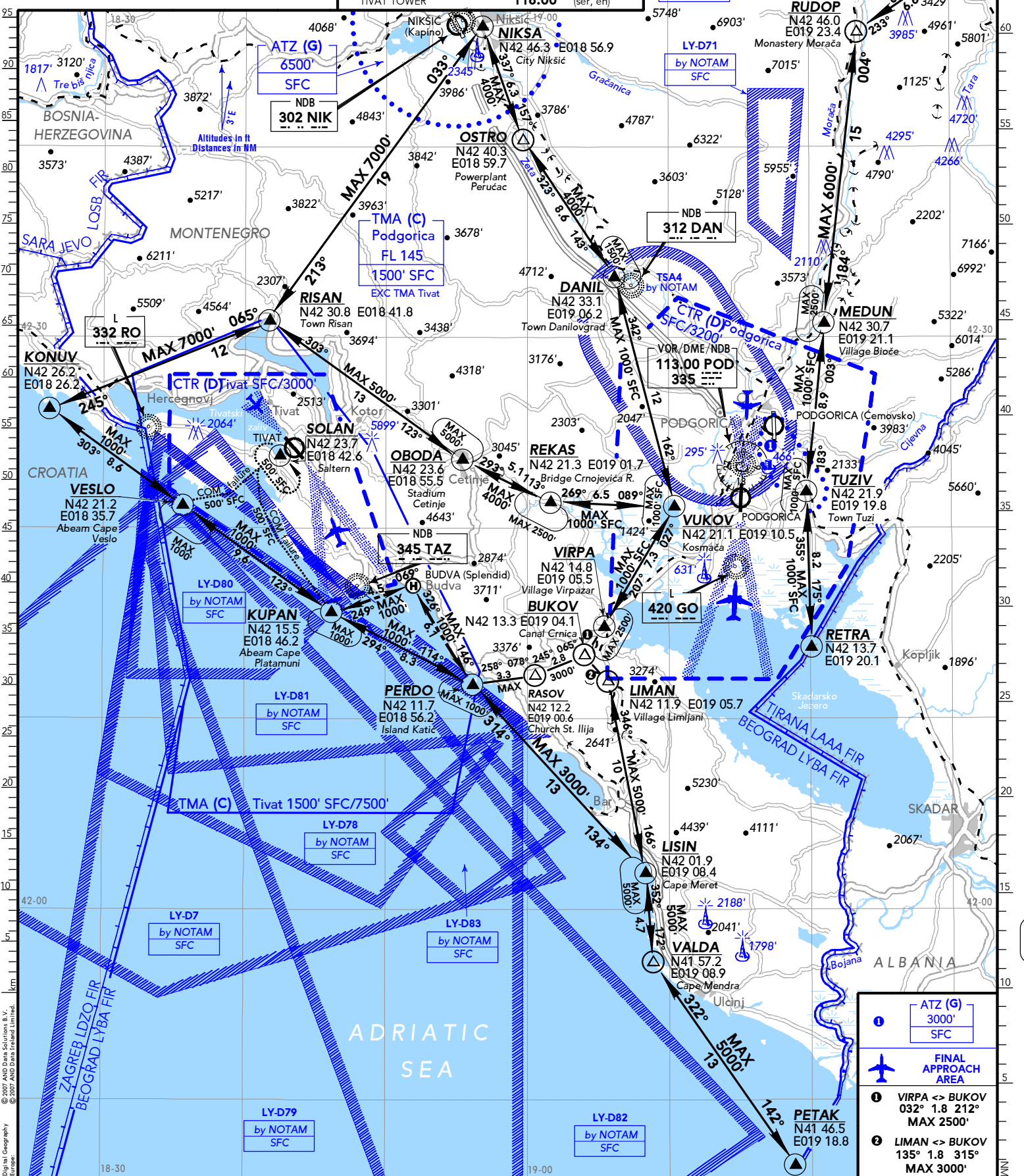
Podgorica Tower 118.7 Secondary VHF-DF
Podgorica Tower 118.2 VHF-DF
Podgorica Approach Control 136.15 Secondary VHF-DF
Podgorica Approach Control 135.15 VHF-DF
Podgorica Approach Control 35.882
Podgorica Radar Radar 136.15 Secondary VHF-DF
Podgorica Radar Radar 135.15 VHF-DF
Podgorica Radar Radar 35.882

AREA
PODGORICA
MONTENEGRO

10-1V 23 DEC 11

JEPPESEN

PODGORICA APPROACH (R)	135.15*	(ser, en)
TIVAT APPROACH	118.00*	(ser, en)
PODGORICA TOWER	118.20	(ser, en)
TIVAT TOWER	118.00*	(ser, en)



	ATZ (G) 3000' SFC
	FINAL APPROACH AREA
	VIRPA <-> BUKOV 032° 1.8 212° MAX 2500'
	LIMAN <-> BUKOV 135° 1.8 315° MAX 3000'

CHANGES: Airspace - OBST.

© JEPPESEN, 2008, 2011. ALL RIGHTS RESERVED.

© 2007 AND Data Solutions, B.V.
 © 2007 AND Data Ireland Limited.
 Digital Geography Europe

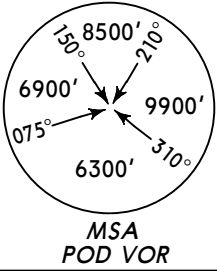
10-1V

PODGORICA

Transit Flights

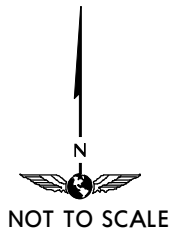
VFR transit flights through CTR (D) Podgorica and CTR (D) Tivat will be cleared only if traffic situation permits.

**BIGLO 1A [BIGL1A], LASTI 2A [LAST2A]
LEBGA 1A [LEBG1A]
RWY 36 ARRIVALS**
~~SPEED~~ MAX 250 KT BELOW 10000'



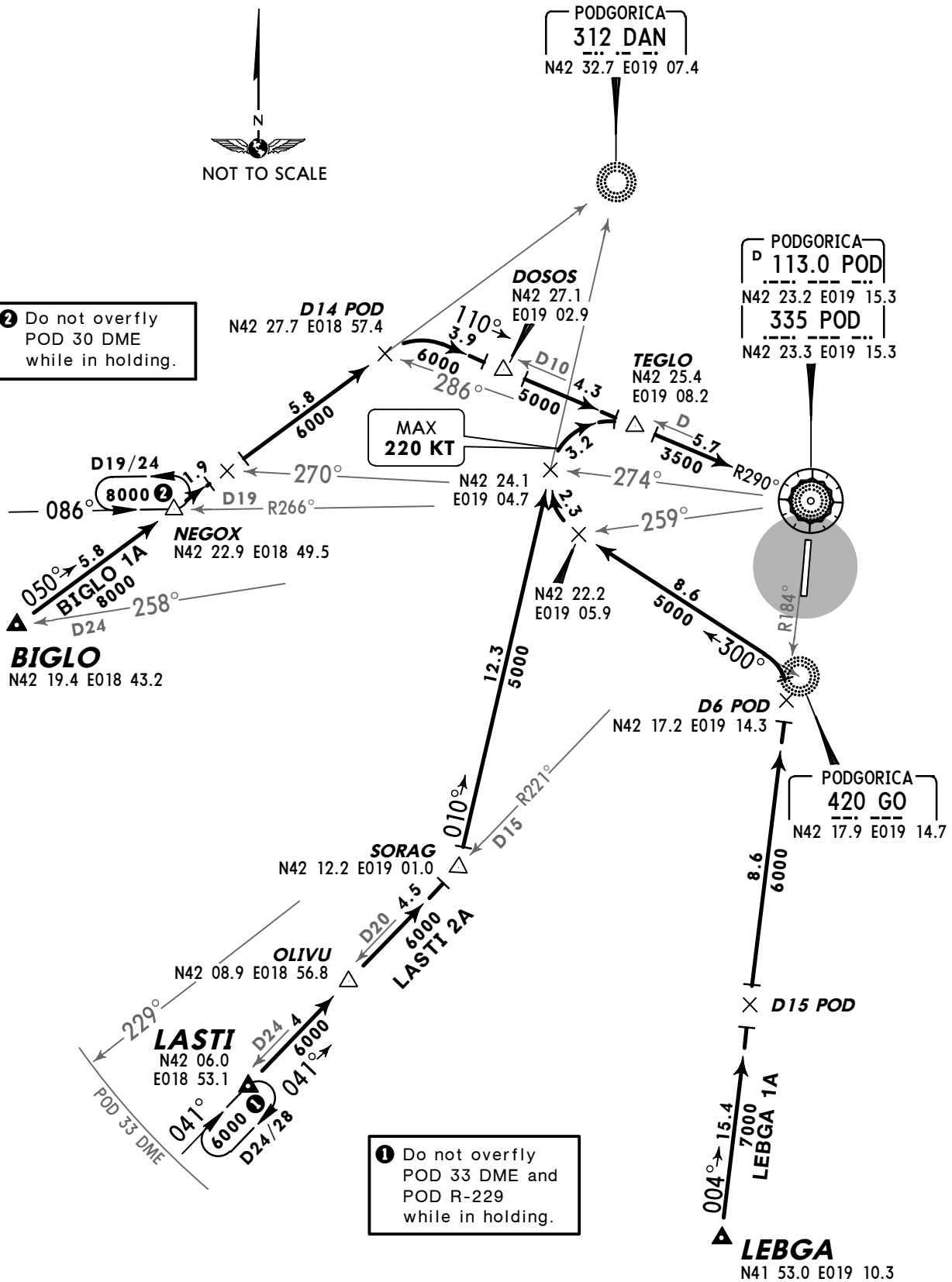
Apt Elev
122'

Alt Set: hPa Trans level: By ATC Trans alt: 10000'



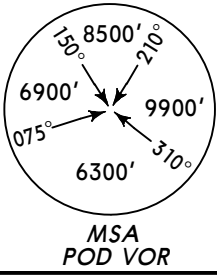
2 Do not overfly
POD 30 DME
while in holding.

POD 30 DME

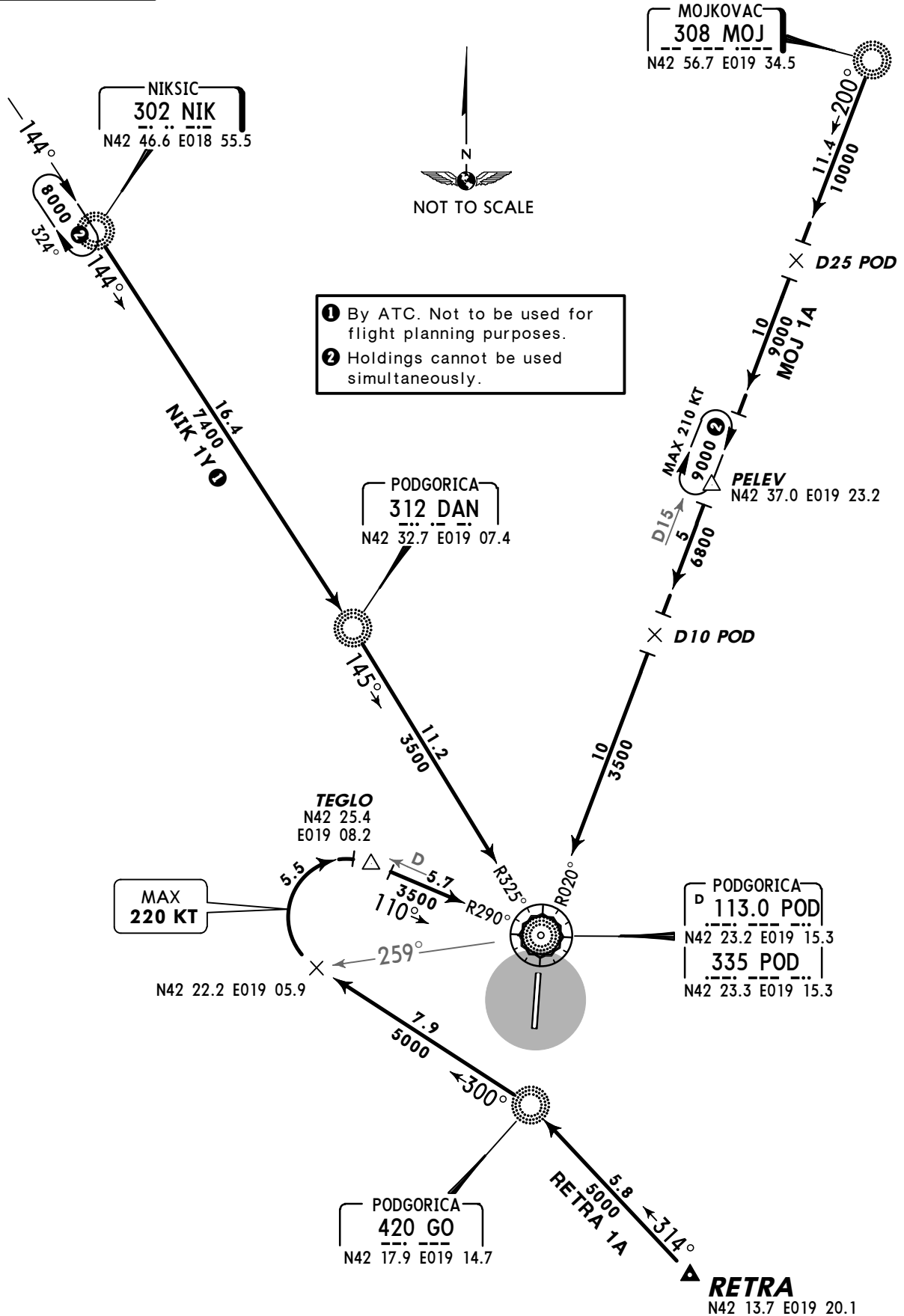


Apt Elev
122'

Alt Set: hPa Trans level: By ATC Trans alt: 10000'

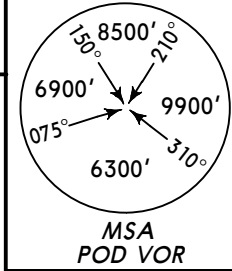


MOJ 1A, NIK 1Y①, RETRA 1A [RETR1A]
RWY 36 ARRIVALS
SPEED: MAX 250 KT BELOW 10000'



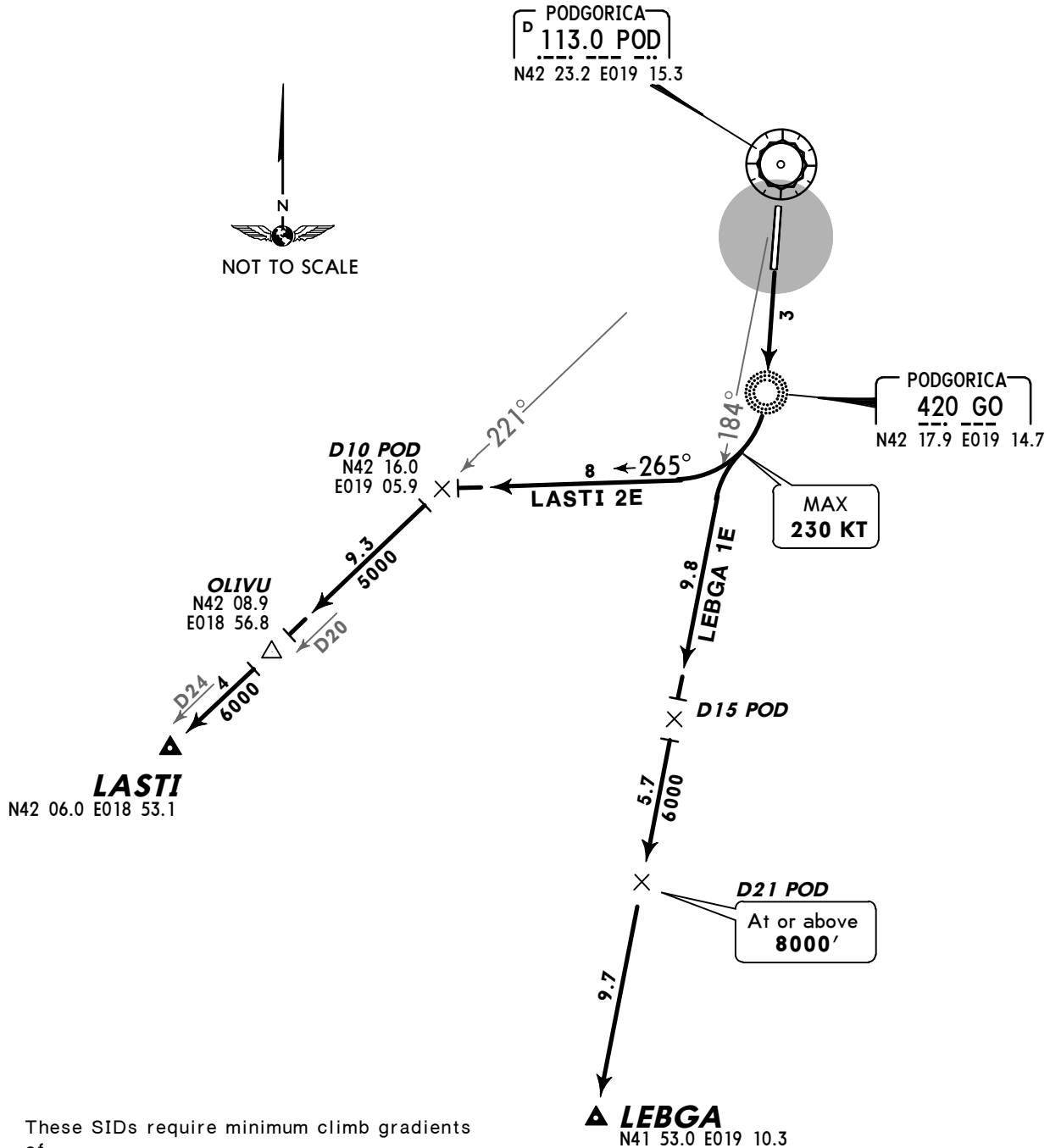
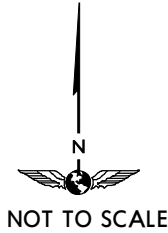
Apt Elev
122'

Trans level: By ATC Trans alt: 10000'



LASTI TWO ECHO (LASTI 2E) [LAST2E]
LEBGA ONE ECHO (LEBGA 1E) [LEBG1E]
RWY 18 DEPARTURES

SPEED: MAX 250 KT BELOW 10000'



These SIDs require minimum climb gradients of

- LASTI 2E: 292' per NM (4.8%) up to 3800'.
- LEBGA 1E: 395' per NM (6.5%) up to 6000'.

Gnd speed-KT	75	100	150	200	250	300
395' per NM	494	658	987	1317	1646	1975
292' per NM	365	486	729	972	1215	1458

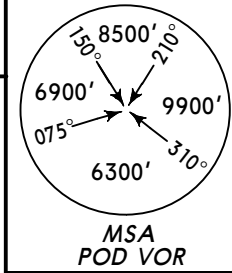
SID

ROUTING

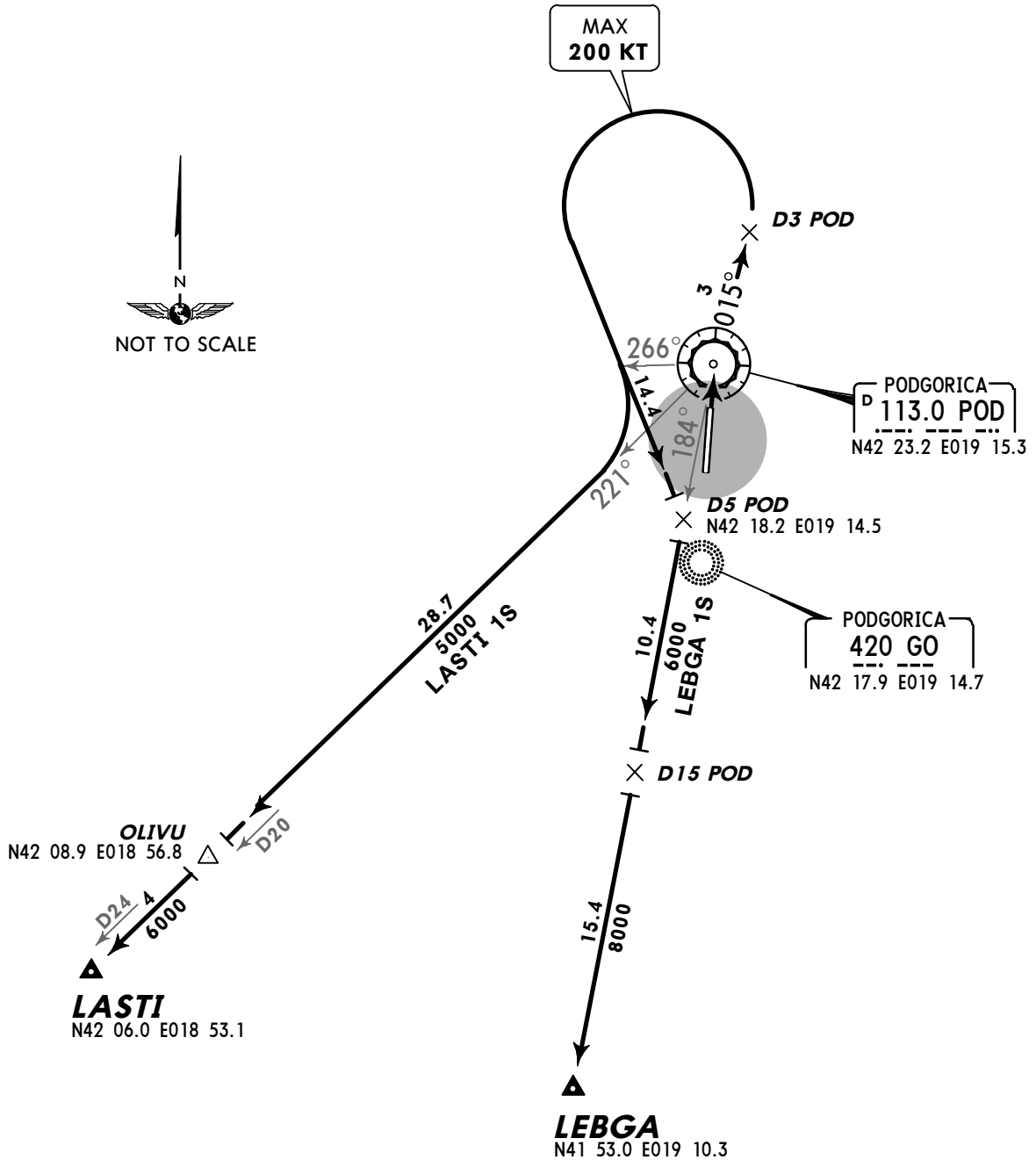
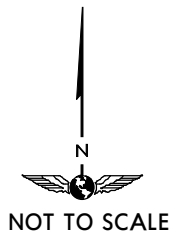
LASTI 2E	Climb straight ahead to GO, turn RIGHT, 265° track to D10 POD, turn LEFT, intercept POD R-221 to LASTI.
LEBGA 1E	Climb straight ahead to GO, turn RIGHT, intercept POD R-184 to LEBGA.

Apt Elev
122'

Trans level: By ATC Trans alt: 10000'



LASTI ONE SIERRA (LASTI 1S) [LAST1S]
LEBGA ONE SIERRA (LEBGA 1S) [LEBG1S]
RWY 36 DEPARTURES
~~SPEEDS~~ MAX 250 KT BELOW 10000'



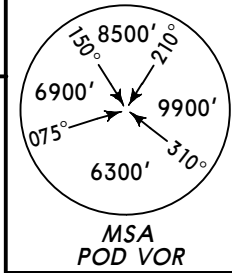
These SIDs require a minimum climb gradient of 304' per NM (5%) up to 2500'.

Gnd speed-KT	75	100	150	200	250	300
304' per NM	380	506	760	1013	1266	1519

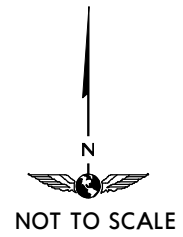
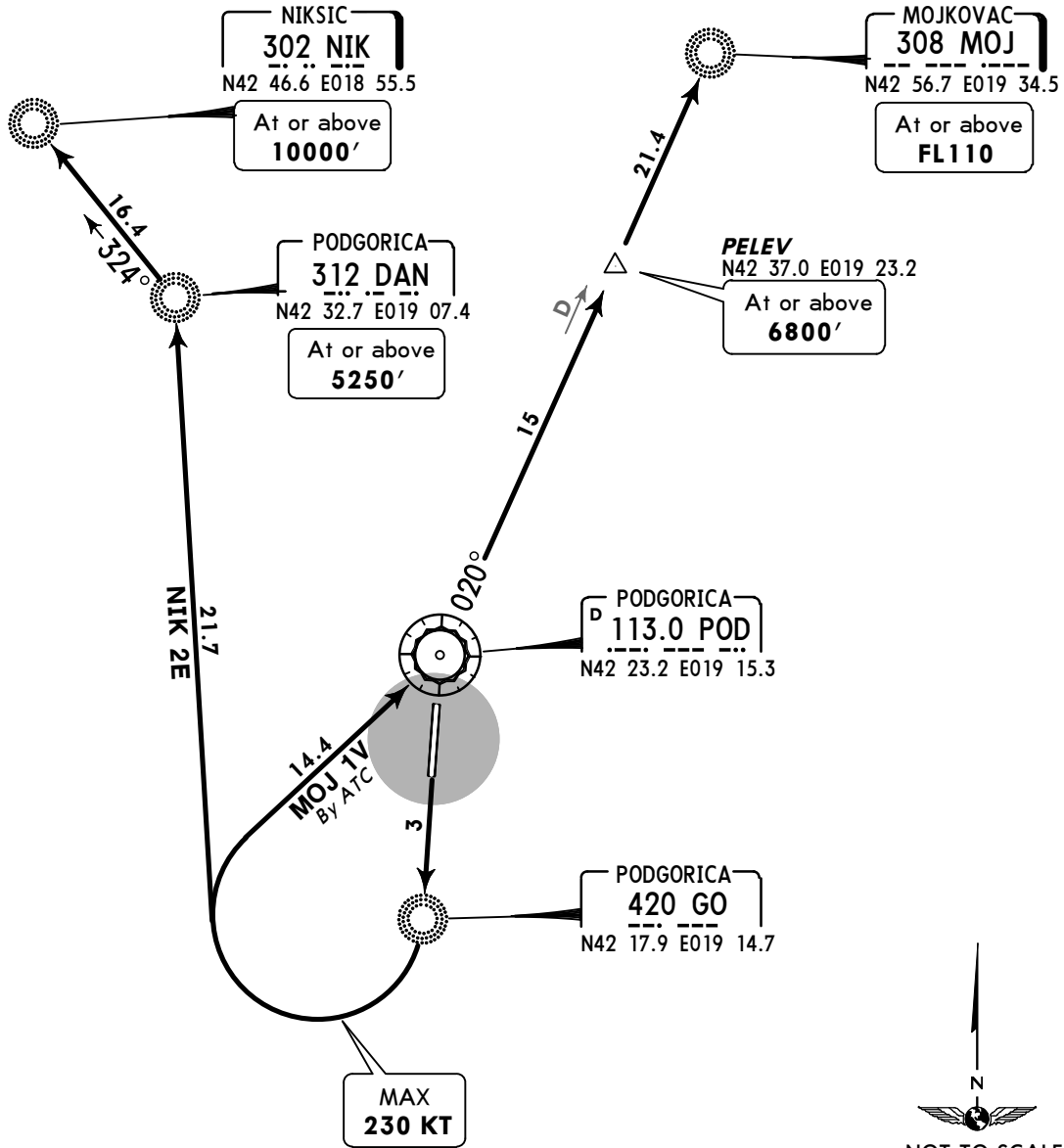
SID	ROUTING
LASTI 1S	Climb straight ahead to POD, POD R-015 to D3 POD, turn LEFT towards GO, at POD R-266 turn RIGHT, intercept POD R-221 to LASTI.
LEBGA 1S	Climb straight ahead to POD, POD R-015 to D3 POD, turn LEFT towards GO, at D5 POD turn RIGHT, intercept POD R-184 to LEBGA.

Apt Elev
122'

Trans level: By ATC Trans alt: 10000'



**MOJKOVAC ONE VICTOR (MOJ 1V)
NIKSIC TWO ECHO (NIK 2E)
RWY 18 DEPARTURES**
~~SPEED~~ MAX 250 KT BELOW 10000'



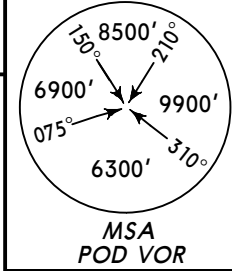
These SIDs require a minimum climb gradient of 261' per NM (4.3%) up to 3800'.

Gnd speed-KT	75	100	150	200	250	300
261' per NM	327	435	653	871	1089	1306

SID	ROUTING
MOJ 1V BY ATC	Climb straight ahead to GO, turn RIGHT to POD, turn LEFT, POD R-020 to MOJ.
NIK 2E	Climb straight ahead to GO, turn RIGHT to DAN, turn LEFT, 324° bearing to NIK.

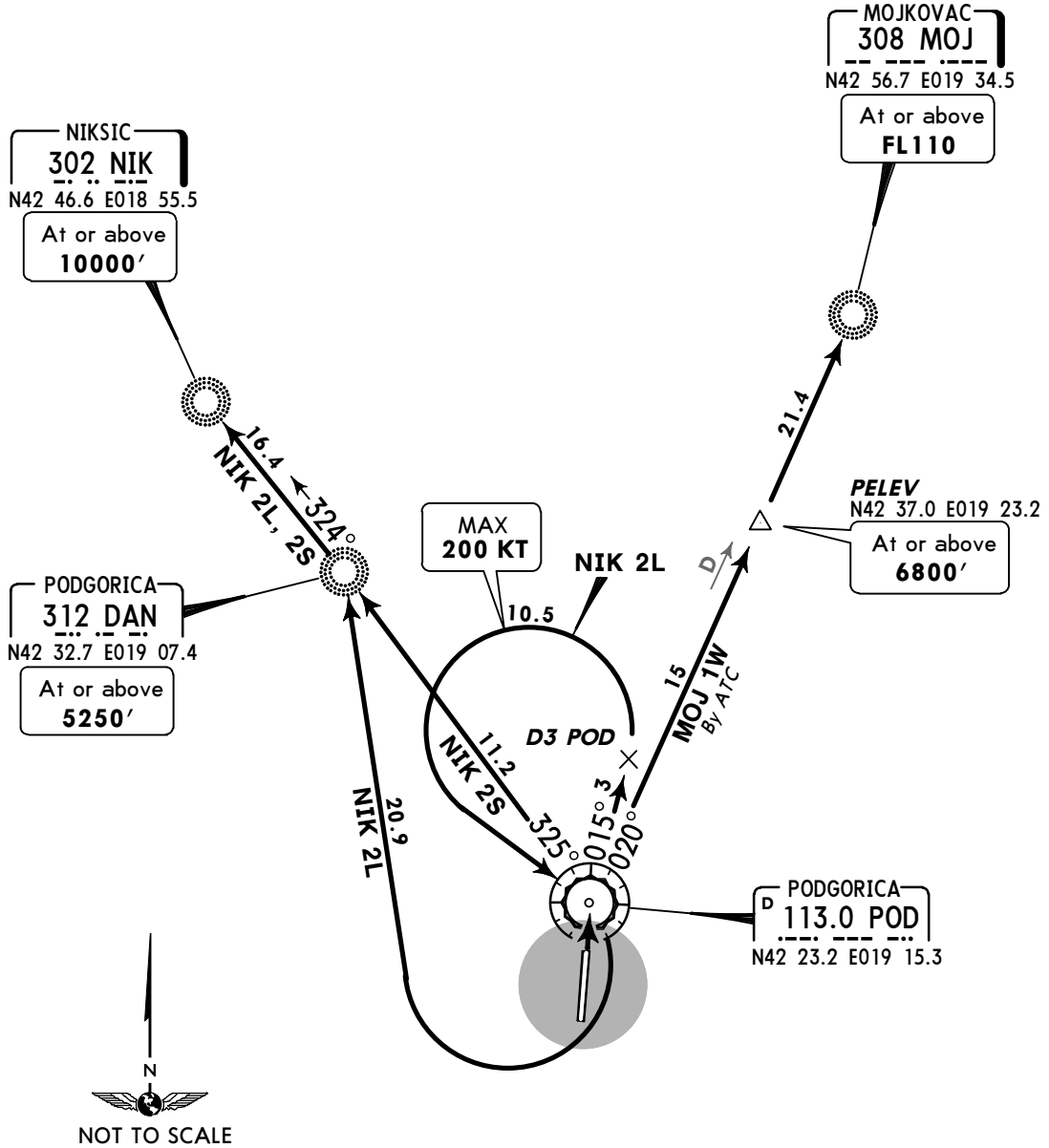
Apt Elev
122'

Trans level: By ATC Trans alt: 10000'



**MOJKOVAC ONE WHISKEY (MOJ 1W)
NIKSIC TWO LIMA (NIK 2L)
NIKSIC TWO SIERRA (NIK 2S)
RWY 36 DEPARTURES**

~~SPEEDS~~ MAX 250 KT BELOW 10000'



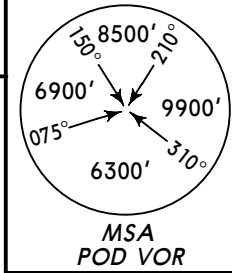
These SIDs require minimum climb gradients of
MOJ 1W, NIK 2S: 437' per NM (7.2%) up to 6600'.
NIK 2L: 280' per NM (4.6%) up to 2500'.

Gnd speed-KT	75	100	150	200	250	300
437' per NM	547	729	1094	1458	1823	2187
280' per NM	349	466	699	932	1165	1398

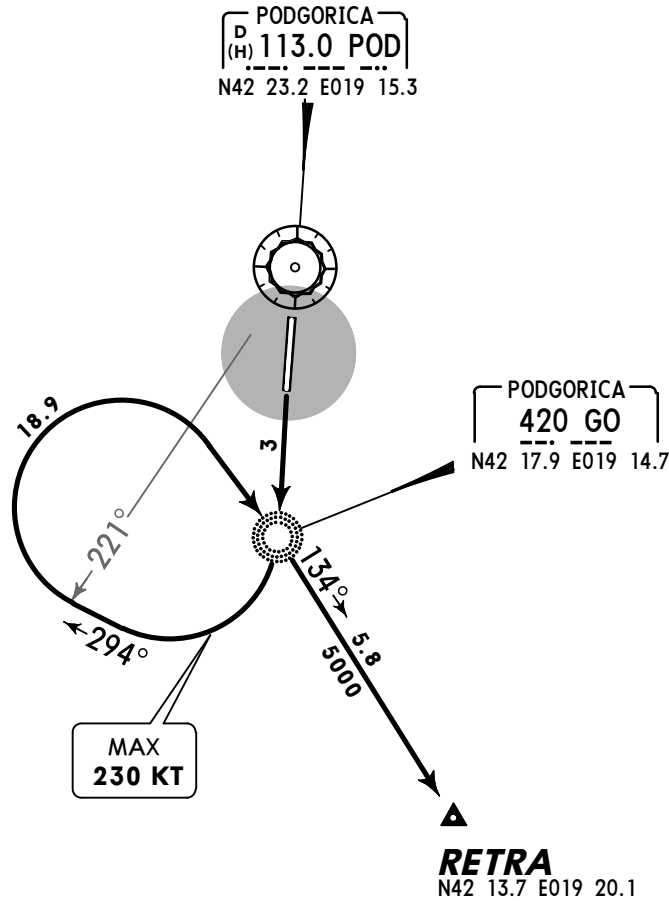
SID	ROUTING
MOJ 1W BY ATC	Climb straight ahead to POD, turn RIGHT, POD R-020 to MOJ.
NIK 2L	Climb straight ahead to POD, POD R-015 to D3 POD, turn LEFT to POD, turn RIGHT to DAN, 324° bearing to NIK.
NIK 2S	Climb straight ahead to POD, turn LEFT, POD R-325 to DAN, 324° bearing to NIK.

Apt Elev
122'

Trans level: By ATC Trans alt: 10000'



RETRA ONE ECHO (RETRA 1E) [RETR1E]
RWY 18 DEPARTURE
~~SPEED~~ MAX 250 KT BELOW 10000'



This SID requires a minimum climb gradient of 261' per NM (4.3%) up to 3800'.

Gnd speed-KT	75	100	150	200	250	300
261' per NM	327	435	653	871	1089	1306

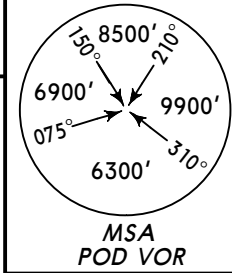


ROUTING

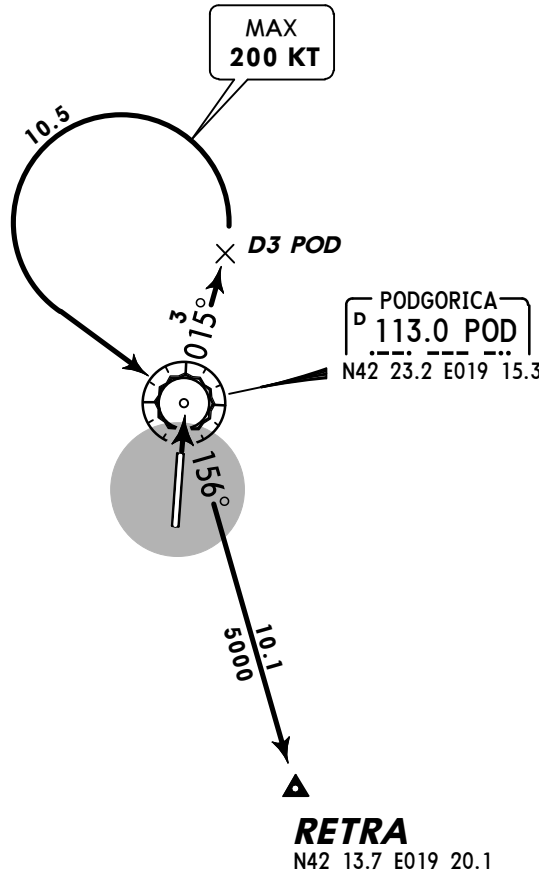
Climb straight ahead to GO, turn RIGHT, 294° track, at POD R-221 turn RIGHT to GO, 134° bearing to RETRA.

Apt Elev
122'

Trans level: By ATC Trans alt: 10000'



RETRA ONE SIERRA (RETRA 1S) [RETR1S]
RWY 36 DEPARTURE
~~SPEED~~ MAX 250 KT BELOW 10000'



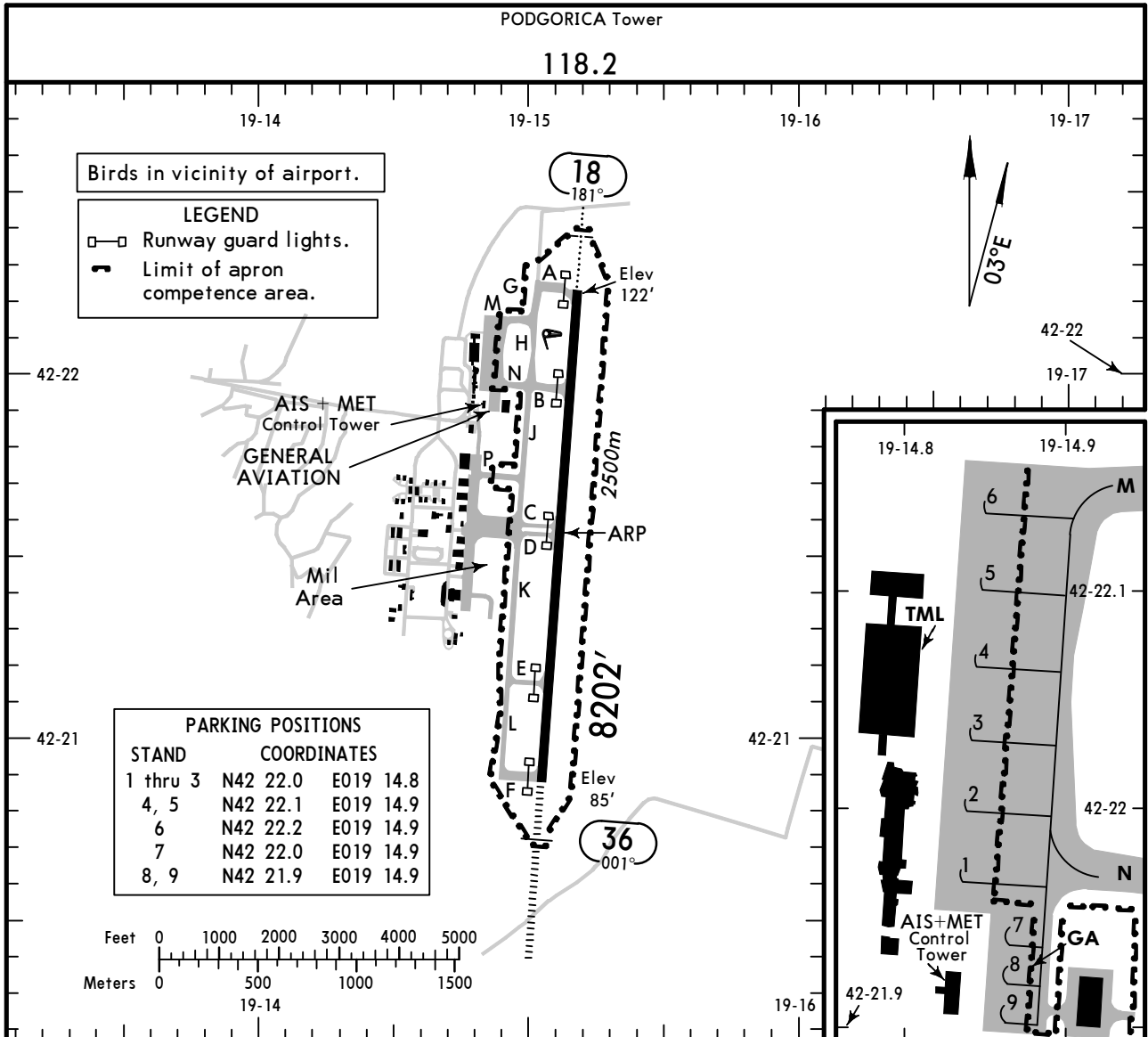
This SID requires a minimum climb gradient of 304' per NM (5%) up to 2500'.

Gnd speed-KT	75	100	150	200	250	300
304' per NM	380	506	760	1013	1266	1519

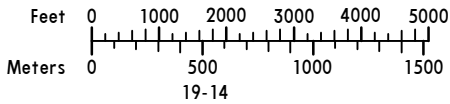


ROUTING

Climb straight ahead to POD, POD R-015 to D3 POD, turn LEFT to POD, turn RIGHT, POD R-156 to RETRA.



PARKING POSITIONS		
STAND	COORDINATES	
1 thru 3	N42 22.0	E019 14.8
4, 5	N42 22.1	E019 14.9
6	N42 22.2	E019 14.9
7	N42 22.0	E019 14.9
8, 9	N42 21.9	E019 14.9



ADDITIONAL RUNWAY INFORMATION

RWY		USABLE LENGTHS			WIDTH
		Threshold	Landing Beyond Glide Slope	TAKE-OFF	
18	HIRL (60m) ALS PAPI (3.20°)			①	148'
36	HIRL (60m) HIALS SFL REIL PAPI (3.20°)		7412' 2259m	①	45m

① TAKE-OFF RUN AVAILABLE

RWY 18:

From rwy head 8202' (2500m)
 twy B int 6578' (2005m)

RWY 36:

From rwy head 8202' (2500m)
 twy E int 6585' (2007m)

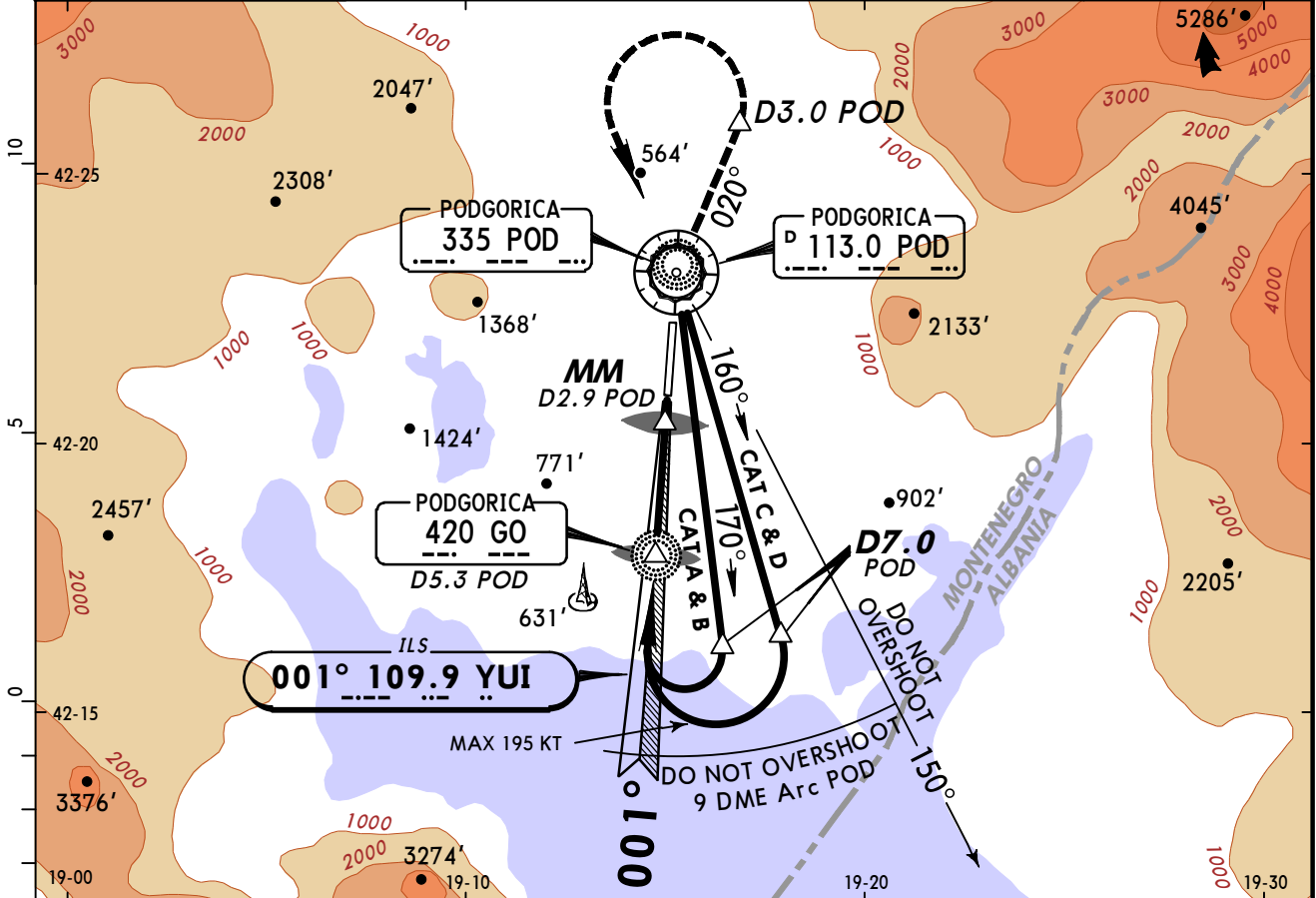
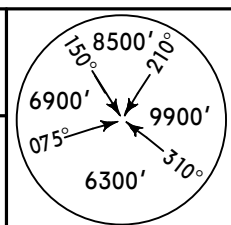
Standard

TAKE-OFF ①

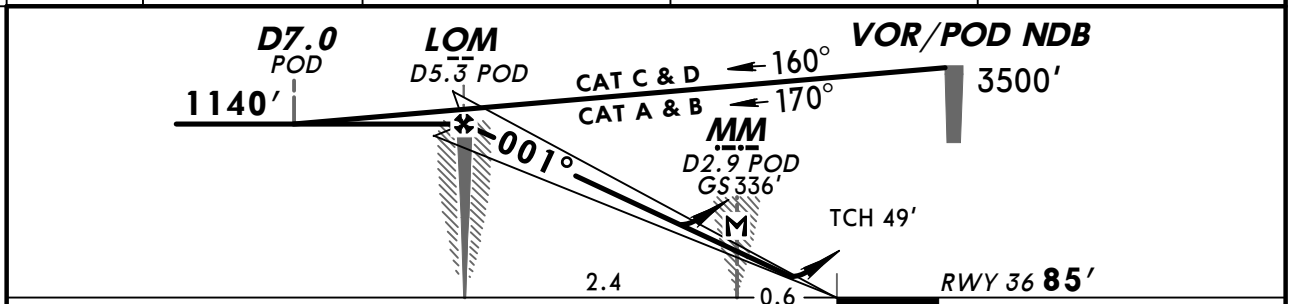
LVP must be in force		NIL (DAY only)	
RL	RL	NIL (DAY only)	
A			
B	250m	400m	500m
C			
D	300m		

① Operators applying U.S. Ops Specs: CL required below 300m.

PODGORICA Approach/Radar (APP) 135.15 118.7				PODGORICA Tower 118.2	
LOC YUI 109.9	Final <i>Apch Crs</i> 001°	GS LOM 1140' (1055')	ILS DA(H) 285' (200')	Apt Elev 122'	RWY 85'
MISSED APCH: Climb STRAIGHT AHEAD to VOR, then turn RIGHT to intercept and follow R-020. At 850' or above, but not before D3.0 POD, turn LEFT (MAX 185 KT/MIM BANK 20°) inbound VOR climbing to 2650' and as directed.					
Alt Set: hPa		Rwy Elev: 3 hPa		Trans level: By ATC	
				Trans alt: 10000'	



LOC (GS out)	POD DME	5.0	4.0	3.0
	ALTITUDE	1060'	720'	380'



<i>Gnd speed-Kts</i>	70	90	100	120	140	160	HIALS REIL PAPI PAPI POD 113.0
<i>ILS GS or LOC Descent Angle</i> 3.20°	401	516	574	688	803	918	
MAP at MM/D2.9 POD							

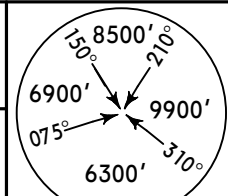
PANS OPS	Standard STRAIGHT-IN LANDING RWY 36				CIRCLE-TO-LAND	
	ILS DA(H) 285' (200')		LOC (GS out) DA(H) 340' (255')			
	FULL/Limited	ALS out		ALS out		
	A		1000m			
	B					
C	800m	1200m		1300m	For Circle-to-land procedure with prescribed flight tracks see 19-10.	
D			1200m			

LYPG/TGD PODGORICA

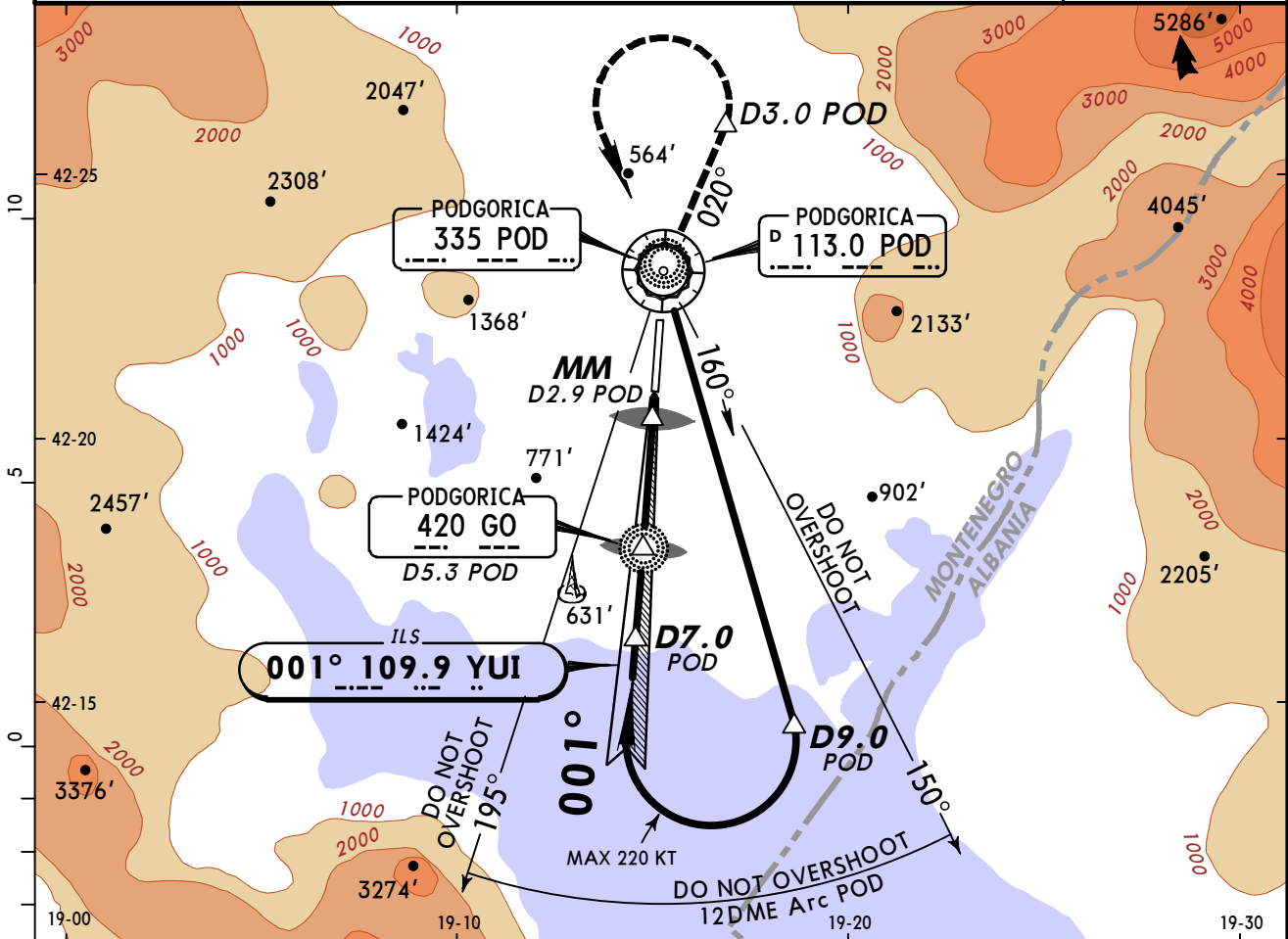
8 MAR 13 (11-2)

JEPPesen PODGORICA, MONTENEGRO CAT C & D ILS Y Rwy 36

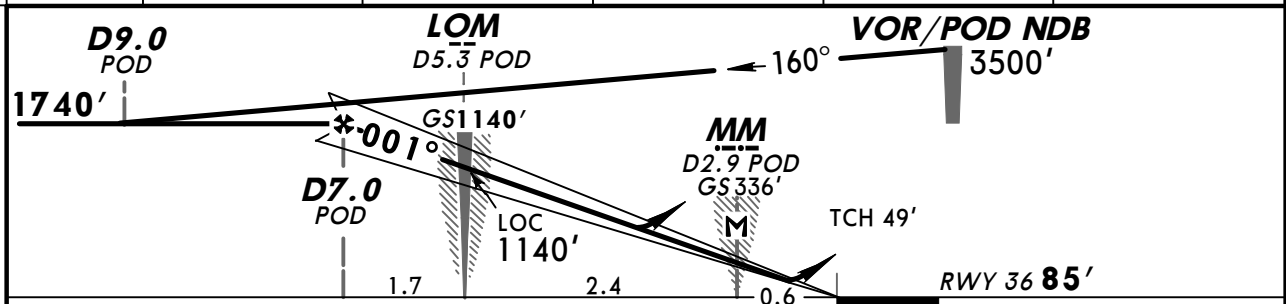
PODGORICA Approach/Radar (APP) 135.15 118.7				PODGORICA Tower 118.2	
LOC YUI 109.9	Final Apch Crs 001°	GS LOM 1140' (1055')	ILS DA(H) 285' (200')	Apt Elev 122'	RWY 85'
MISSED APCH: Climb STRAIGHT AHEAD to VOR, then turn RIGHT to intercept and follow R-020. At 850' or above, but not before D3.0 POD, turn LEFT (MAX 185 KT/MIM BANK 20°) inbound VOR climbing to 2650' and as directed.					
Alt Set: hPa		Rwy Elev: 3 hPa	Trans level: By ATC		Trans alt: 10000'



MSA
POD VOR



LOC (GS out)	POD DME	6.0	5.0	4.0	3.0
	ALTITUDE	1400'	1060'	720'	380'

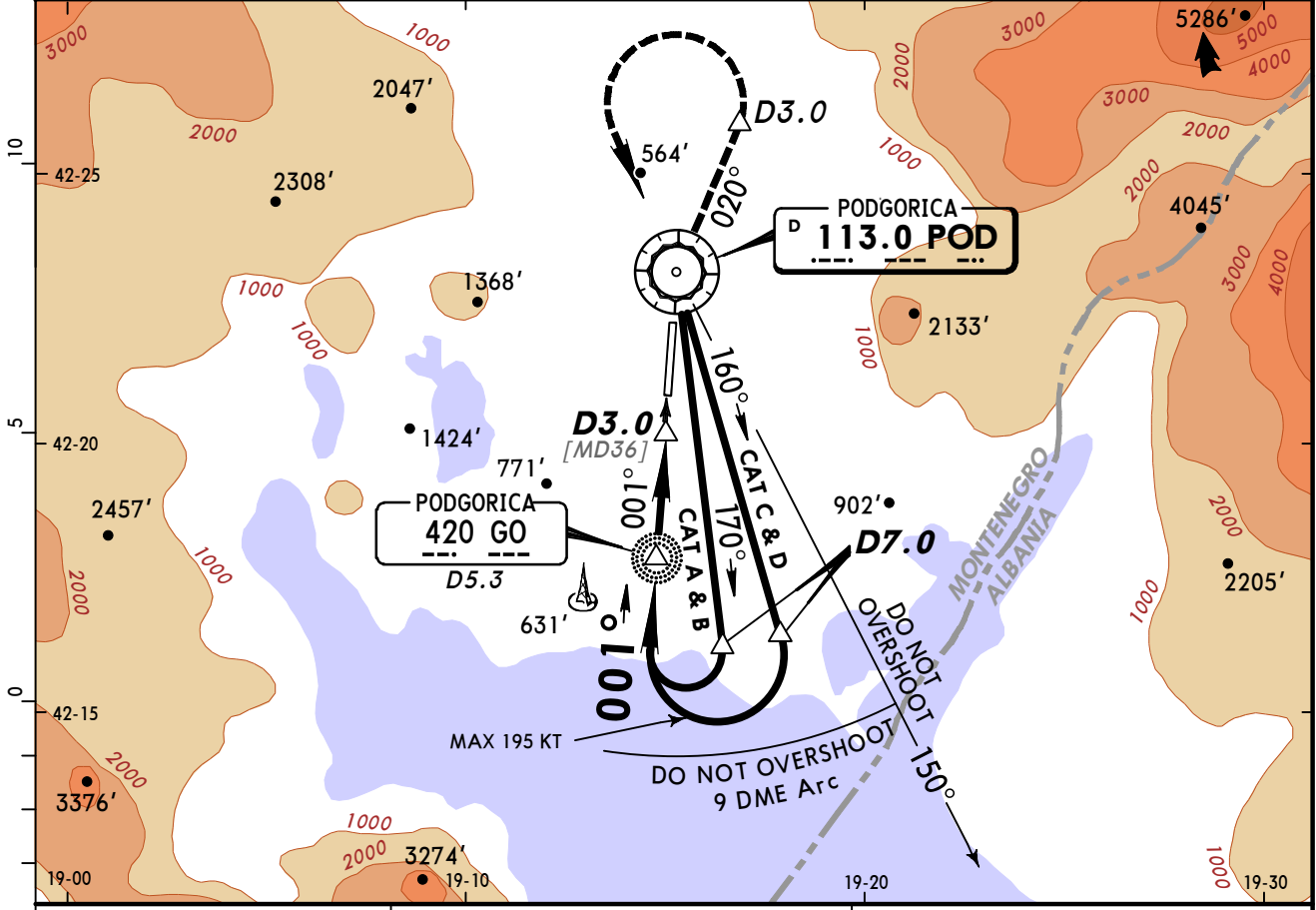
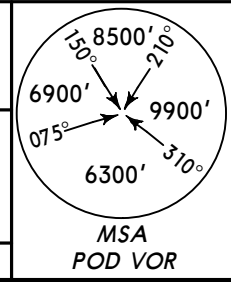


Gnd speed-Kts	70	90	100	120	140	160	HIALS REIL PAPI PAPI POD 113.0
ILS GS or LOC Descent Angle 3.20°	401	516	574	688	803	918	
MAP at MM/D2.9 POD							

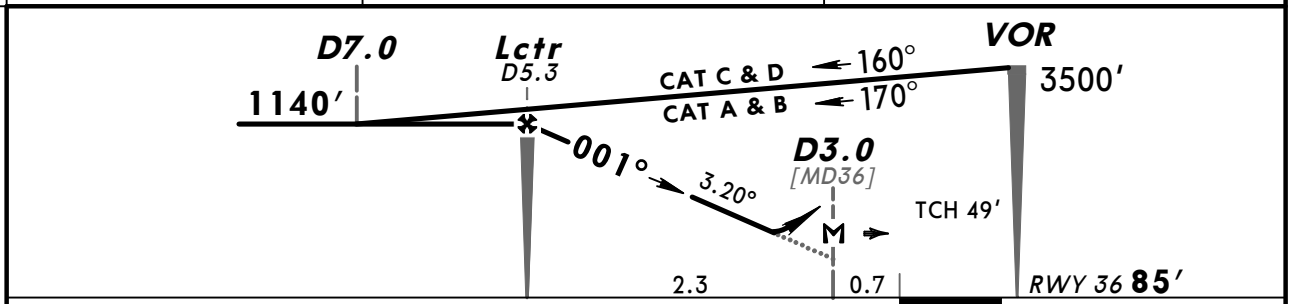
PANS OPS	Standard STRAIGHT-IN LANDING RWY 36				CIRCLE-TO-LAND	
	ILS		LOC (GS out)			
	DA(H) 285' (200')		DA(H) 340' (255')			
	FULL/Limited		ALS out		ALS out	
	NOT APPLICABLE		NOT APPLICABLE		For Circle-to-land procedure with prescribed flight tracks see 19-10.	
A	800m		1200m		1200m	
B	1200m		1300m			
C						
D						

LYPG/TGD PODGORICA

PODGORICA Approach/Radar (APP) 135.15 118.7				PODGORICA Tower 118.2	
VOR POD 113.0	Final Apch Crs 001°	Minimum Alt Lctr 1140' (1055')	DA(H) 480' (395')	Apt Elev 122' RWY 85'	
MISSED APCH: Climb STRAIGHT AHEAD to VOR, then turn RIGHT to intercept and follow R-020. At 1150' or above, but not before D3.0, turn LEFT (MAX 185 KT/MIM BANK 20°) inbound VOR climbing to 2650' and as directed.					
Alt Set: hPa		Rwy Elev: 3 hPa	Trans level: By ATC		Trans alt: 10000'



POD DME	5.0	4.0
ALTITUDE	1060'	720'

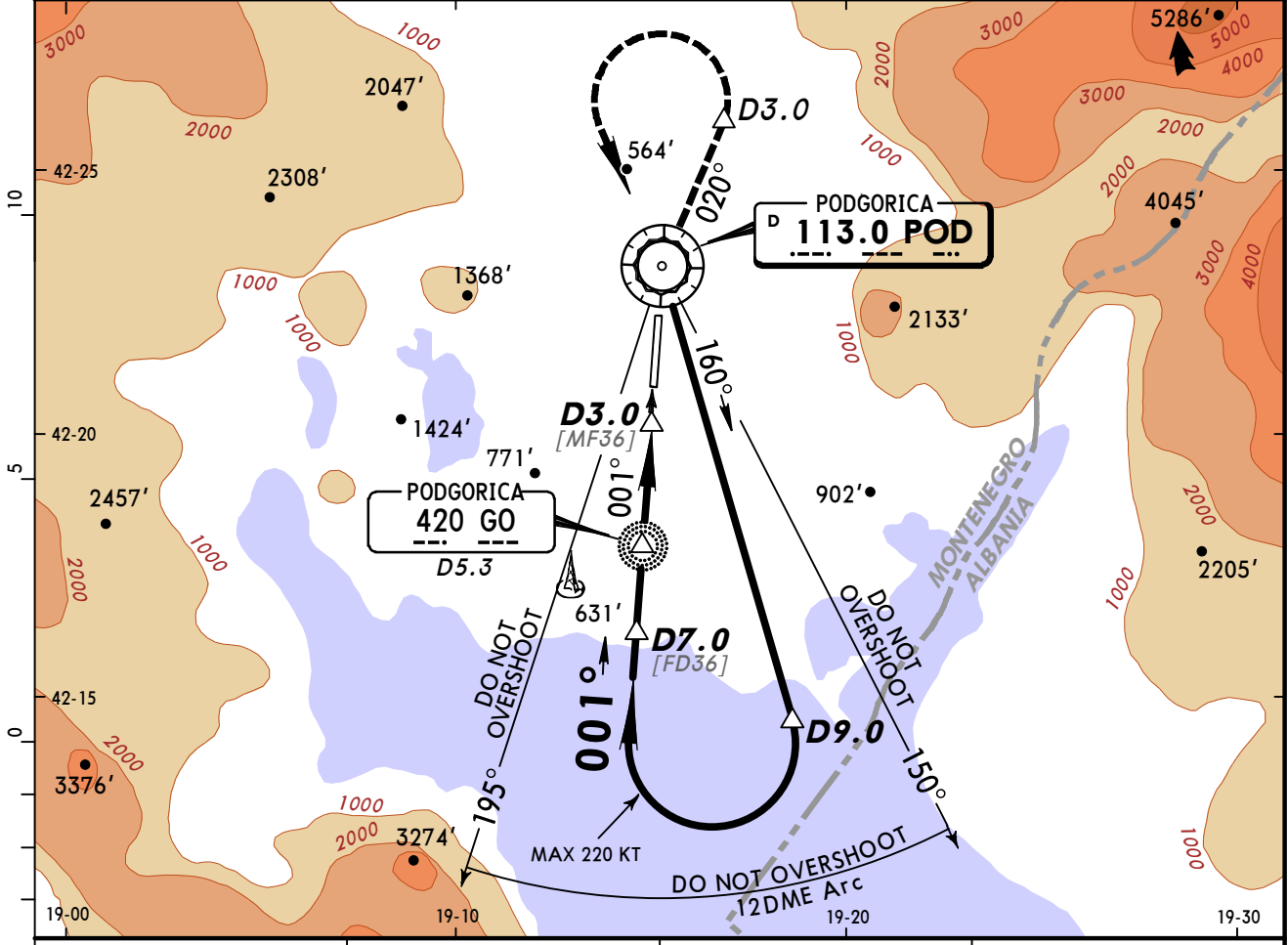
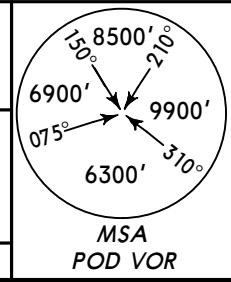


Gnd speed-Kts	70	90	100	120	140	160	HIALS PAPI PAPI POD 113.0	
Descent Angle	3.20°	396	510	566	679	793		906
MAP at D3.0								

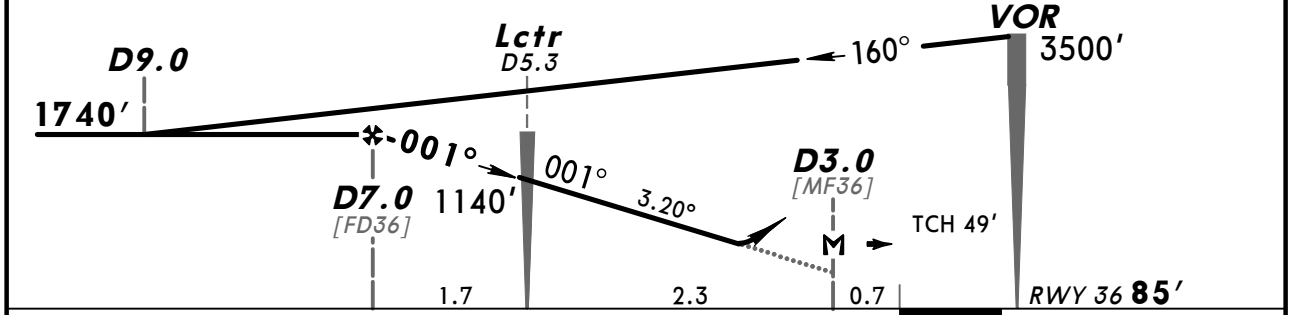
PANS OPS	Standard STRAIGHT-IN LANDING RWY 36		CIRCLE-TO-LAND
	CDFA DA(H) 480' (395')		ALS out
	A	1100m	
	B	1200m	
C		1800m	For Circle-to-land procedure with prescribed flight tracks see 19-10.
D			

LYPG/TGD PODGORICA

PODGORICA Approach/Radar (APP) 135.15 118.7				PODGORICA Tower 118.2	
VOR POD 113.0	Final Apch Crs 001°	Minimum Alt D7.0 1740' (1655')	DA(H) 480' (395')	Apt Elev 122' RWY 85'	
MISSED APCH: Climb STRAIGHT AHEAD to VOR, then turn RIGHT to intercept and follow R-020. At 1150' or above, but not before D3.0, turn LEFT (MAX 185 KT/MIM BANK 20°) inbound VOR climbing to 2650' and as directed.					
Alt Set: hPa		Rwy Elev: 3 hPa	Trans level: By ATC		Trans alt: 10000'



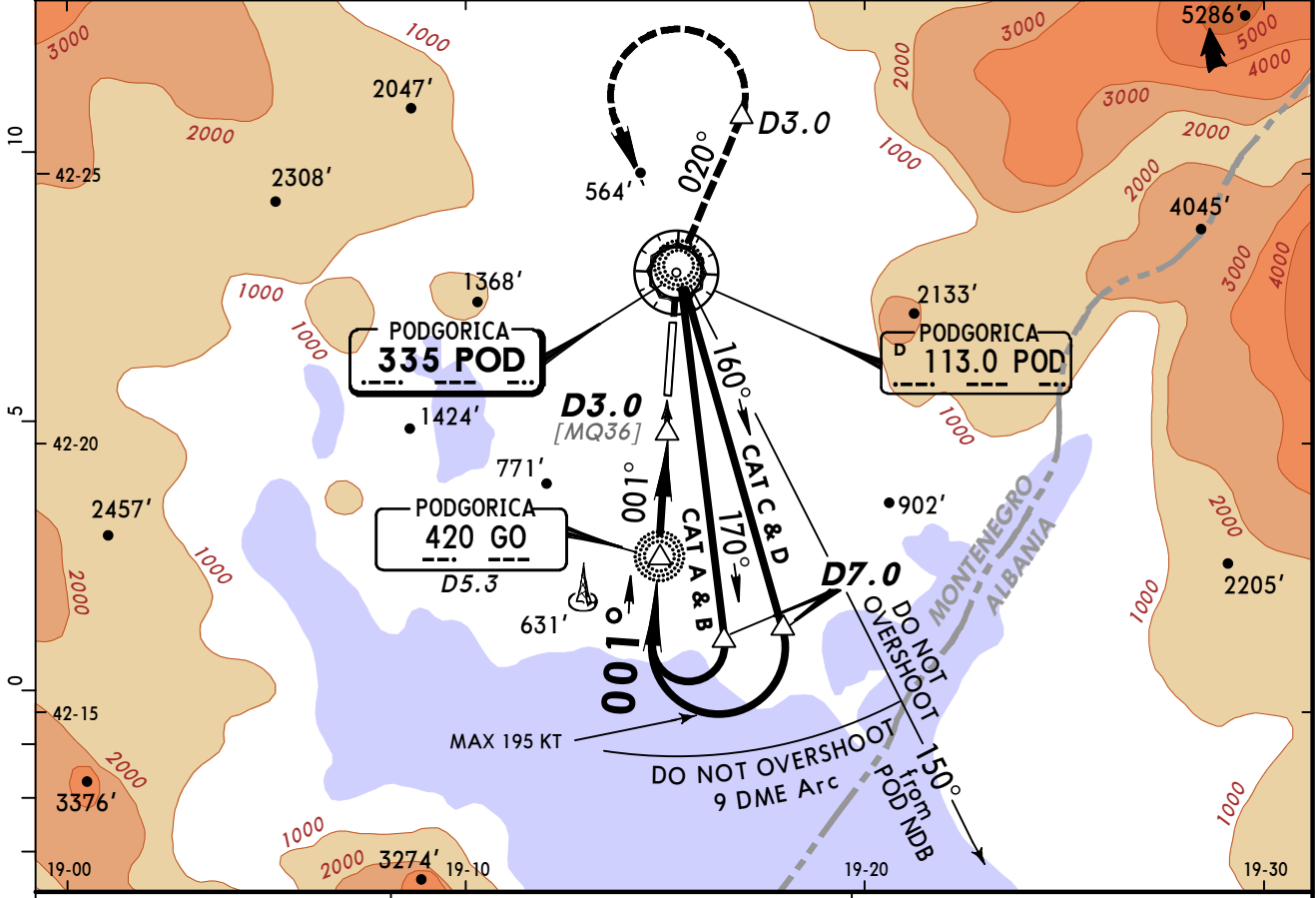
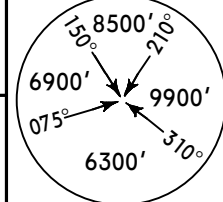
POD DME	6.0	5.0	4.0
ALTITUDE	1400'	1060'	720'



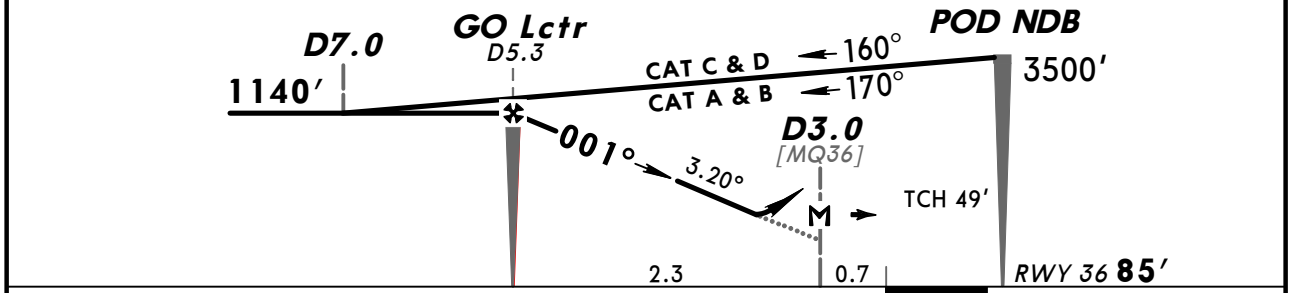
Gnd speed-Kts	70	90	100	120	140	160	HIALS PAPI PAPI POD 113.0
Descent Angle 3.20°	396	510	566	679	793	906	
MAP at D3.0							

PANS OPS	Standard	STRAIGHT-IN LANDING RWY 36	CIRCLE-TO-LAND
		CDFA DA(H) 480' (395')	
		ALS out	
	A	NOT APPLICABLE	
B			For Circle-to-land procedure with prescribed flight tracks see 19-10.
C	1100m	1800m	
D			

PODGORICA Approach/Radar (APP) 135.15 118.7				PODGORICA Tower 118.2	
NDB POD 335	<i>Final</i> <i>Apch Crs</i> 001°	<i>Minimum Alt</i> <i>GO Lctr</i> 1140' (1055')	<i>DA(H)</i> 500' (415')	<i>Apt Elev</i> 122'	<i>RWY</i> 85'
MISSED APCH: Climb STRAIGHT AHEAD to POD NDB, then turn RIGHT onto 020° from POD NDB. At 1150' or above, but not before D3.0, turn LEFT (MAX 185 KT/MIM BANK 20°) inbound POD NDB climbing to 2650' and as directed.					
Alt Set: hPa		Rwy Elev: 3 hPa		Trans level: By ATC	
		Trans alt: 10000'			



POD DME	5.0	4.0
ALTITUDE	1060'	720'



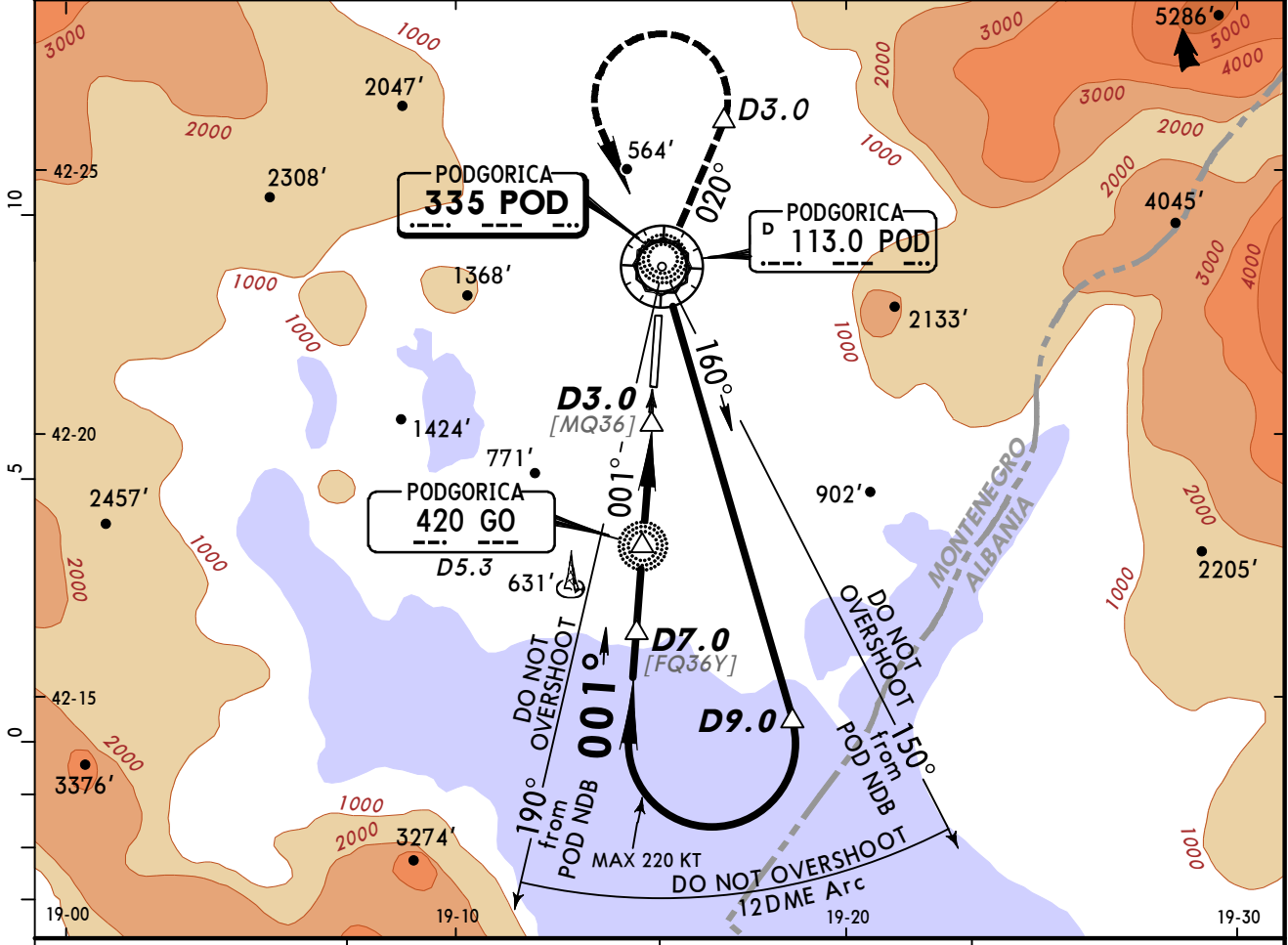
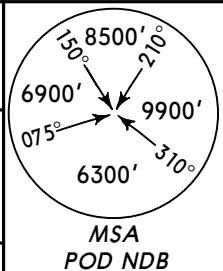
<i>Gnd speed-Kts</i>	70	90	100	120	140	160
<i>Descent Angle</i> 3.20°	396	510	566	679	793	906
<i>MAP at D3.0</i>						

HIALS
 PAPI PAPI
POD 335
 ↑

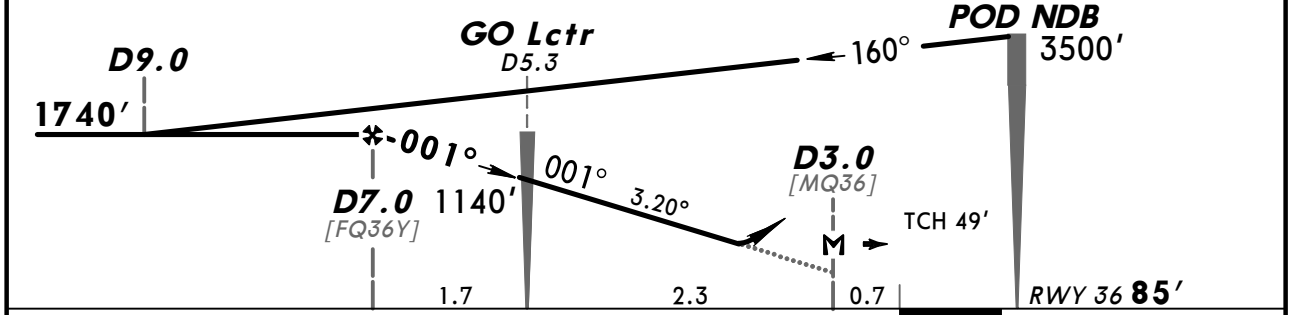
PANS OPS	Standard STRAIGHT-IN LANDING RWY 36		CIRCLE-TO-LAND
	CDFA DA(H) 500' (415')		
	ALS out		For Circle-to-land procedure with prescribed flight tracks see 19-10.
	A	1200m	
B			
C			
D			

LYPG/TGD PODGORICA

PODGORICA Approach/Radar (APP) 135.15 118.7				PODGORICA Tower 118.2	
NDB POD 335	Final Apch Crs 001°	Minimum Alt D7.0 1740' (1655')	DA(H) 500' (415')	Apt Elev 122'	RWY 85'
MISSED APCH: Climb STRAIGHT AHEAD to POD NDB, then turn RIGHT onto 020° from POD NDB. At 1150' or above, but not before D3.0, turn LEFT (MAX 185 KT/MIM BANK 20°) inbound POD NDB climbing to 2650' and as directed.					
Alt Set: hPa		Rwy Elev: 3 hPa		Trans alt: 10000'	



POD DME	6.0	5.0
ALTITUDE	1400'	1060'
		720'



Gnd speed-Kts	70	90	100	120	140	160		HIALS PAPI PAPI	POD 335
Descent Angle 3.20°	396	510	566	679	793	906			↑
MAP at D3.0									

PANS OPS	Standard	STRAIGHT-IN LANDING RWY 36 CDFA DA(H) 500' (415') ALS out	CIRCLE-TO-LAND
	A	NOT APPLICABLE	
	B	NOT APPLICABLE	
	C	1200m	1900m

(APP)

VDF

LYPG

Elev 122'/37m

N42 21.6

E019 15.1

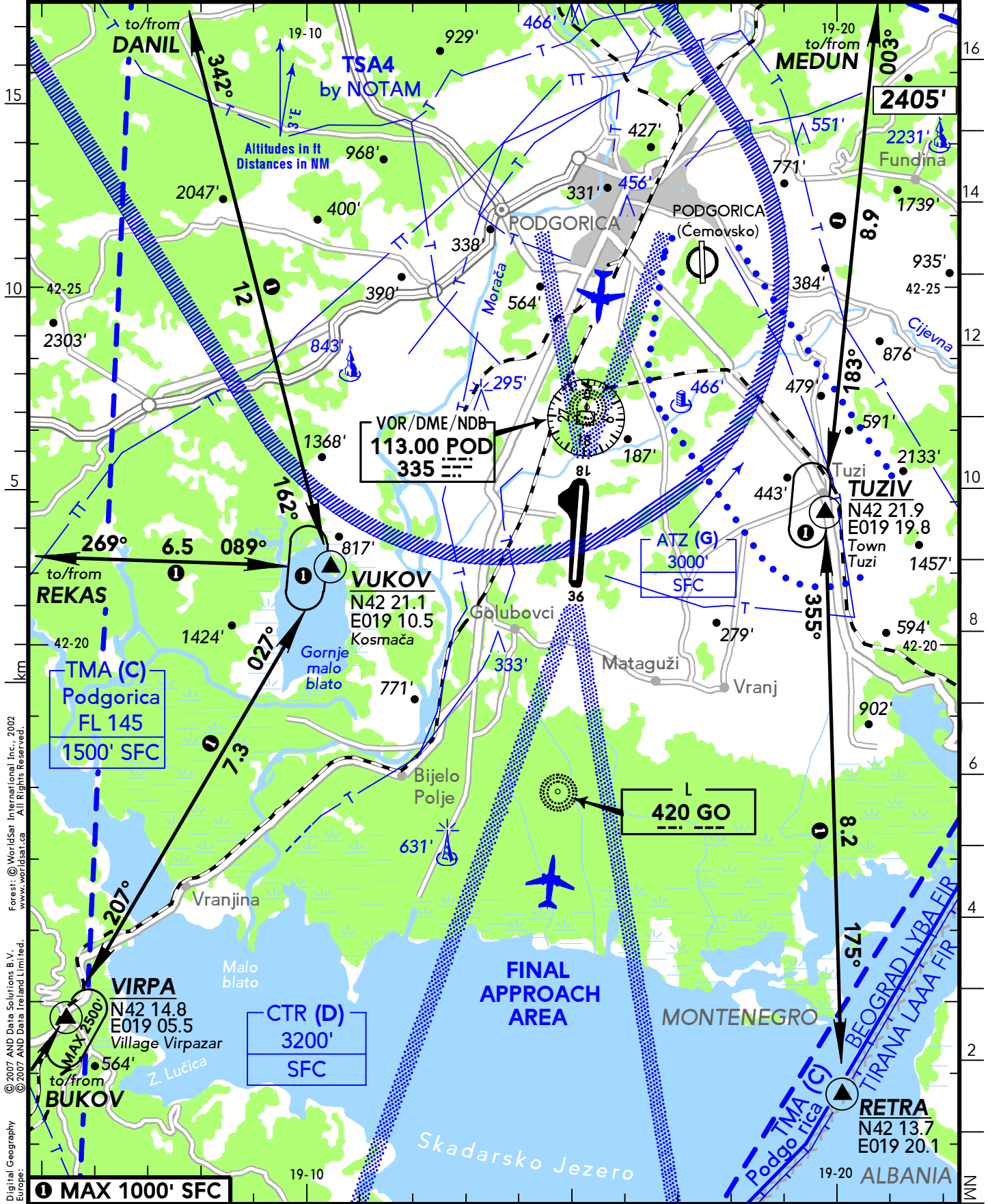
4.3 NM S Podgorica

PODGORICA APPROACH (R) 135.15 (ser, en)
118.70 (S) (ser, en)

(TWR)

PODGORICA TOWER 118.20 (ser, en)

RWY	ILS	RWY	ILS
		36	109.90 YUI 001°



Digital Geography Europe: © 2007 AND Data Solutions B.V. © 2007 AND Data Ireland Limited. Forest: © Worldsat International Inc., 2002 www.worldsat.ca All Rights Reserved.

CHANGES: Airspace - OBST - Topography.

© JEPPESSEN, 2005, 2011. ALL RIGHTS RESERVED.

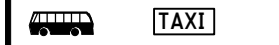
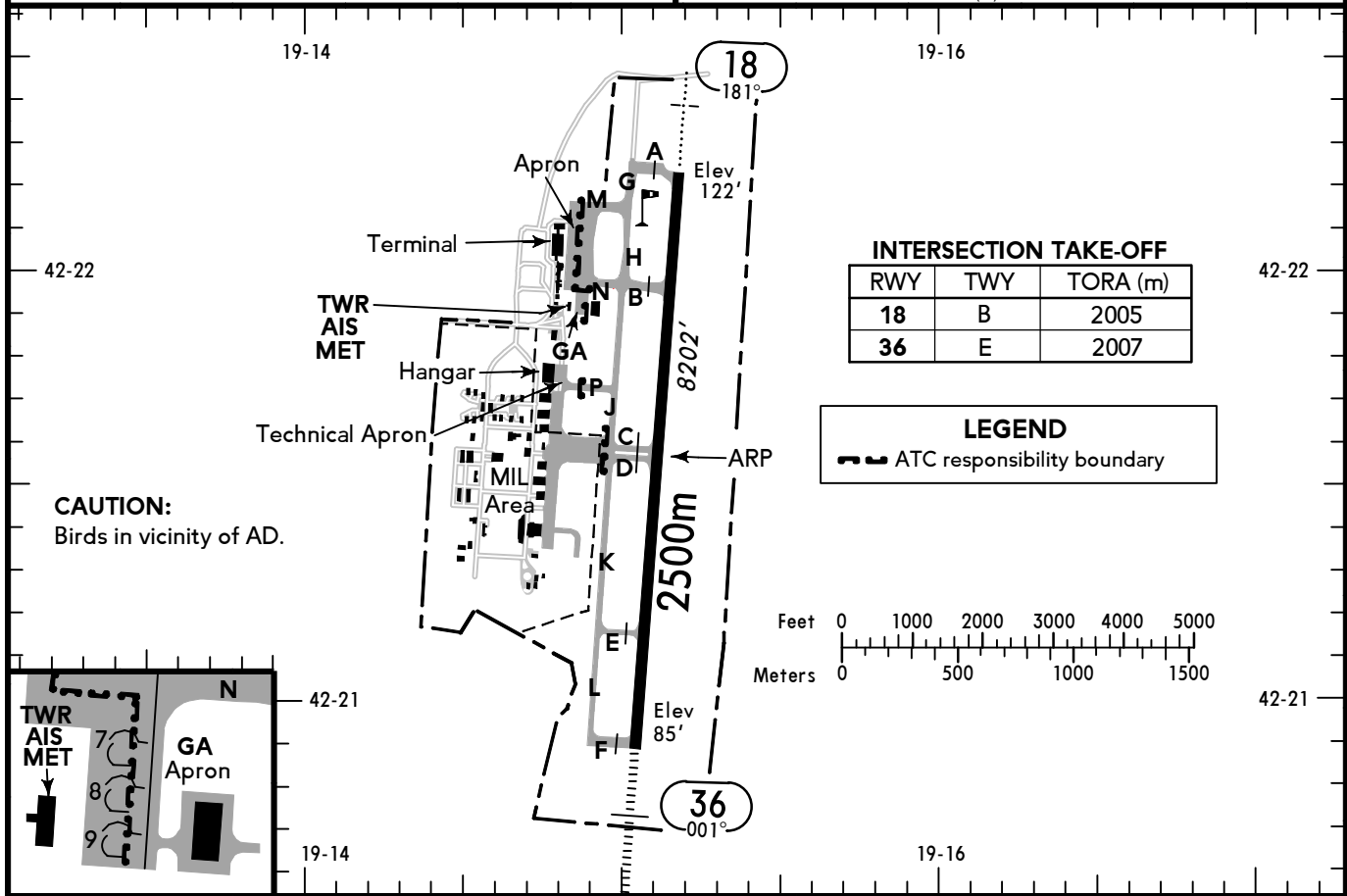
PODGORICA
PODGORICA
MONTENEGRO

19-2 23 DEC 11



(FIS)

PODGORICA APPROACH (R) **135.15**



ALS - PAPI (3.2°) - THRL - RL - TWYL - APRON - OBSTL.

RWY No	Dimension (m) - Surface	TORA (m)	LDA (m)	Strength	Lights
18	2500 x 45 Asphalt	2500	2500	PCN 55/R/B/W/T	
36					

NOTE: See also PODGORICA 10-1V.

Departures
 VFR flights shall be planned according to VFR routes and comply with instructions and clearances given by PODGORICA TWR.

Arrivals
 VFR flights shall be conducted along the routes from REPs RISAN, NIKSA, PERDO, LISIN, VAGAN and RETRA, where further instructions are received from PODGORICA APP, to holding points at VUKOV and TUZIV, where instructions and landing clearance will be given by PODGORICA TWR.

REPs VAGAN, DANIL, OBODA, PERDO and LISIN are holding points, where pilots have to wait for instructions for APCH from PODGORICA APP, if instructions have no been provided earlier.

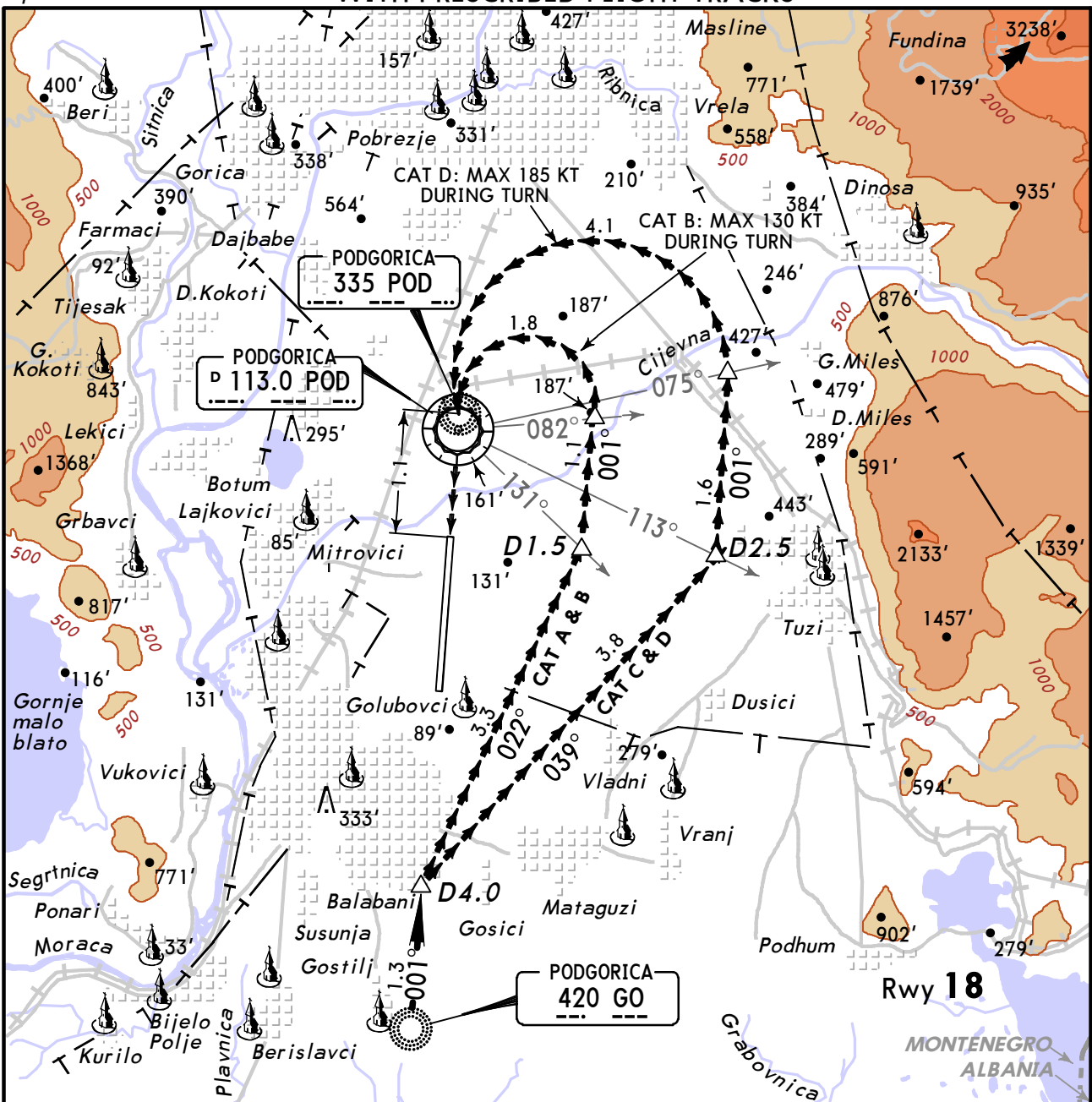
COM Failure
 If ACFT is equipped with transponder, the pilot shall squawk SSR code A7600, and
 - if cleared before to enter the CTR, continue the flight according to given clearance.
 If landing clearance not included, the pilot should hold at holding points VUKOV or TUZIV observing traffic and awaiting light signals from Podgorica TWR.
 - if communication has failed before receiving clearance to enter CTR, the pilot should continue flight at 500' SFC along routes to holding points VUKOV or TUZIV observing traffic and awaiting light signals from Podgorica TWR.

HEL
 RWY is used for TKOF & LDG.

CAUTION:
 State border to Albania approximate 7 NM SE of AD.

Apt Elev 122'

CIRCLE-TO-LAND WITH PRESCRIBED FLIGHT TRACKS



MISSED APPROACH:

If visual reference is lost, initial climbing turn towards the landing rwy. Overhead airport proceed climbing to GO Lctr and as directed.

Standard

	Max Kts	MDA(H)	VIS
A	100	630' (508')	1800m
B	135	900' (778')	2400m
C	180	900' (778')	3600m
D	185	900' (778')	3600m

PANS OPS