

## General Information

Location: Vrsac Scg  
IATA Code:  
Lat/Long: N45° 08.9' E021° 18.6'  
Elevation: 276 ft

Airport Use: Public  
Magnetic Variation: 4.4°E

Repair Types: Minor Airframe, Minor Engine  
Customs: No  
Airport Type: IFR  
Landing Fee: Yes  
Control Tower: Yes  
Jet Start Unit: No  
LLWS Alert: No  
Beacon: Yes

Sunrise: 0329 Z  
Sunset: 1736 Z,

## Runway Information

Runway: 01L  
Length x Width: 2674 ft x 135 ft  
Surface Type: grass  
TDZ-Elev: 275 ft

Runway: 01R  
Length x Width: 3281 ft x 82 ft  
Surface Type: asphalt  
TDZ-Elev: 275 ft  
Lighting: Edge, ALS

Runway: 16  
Length x Width: 1788 ft x 98 ft  
Surface Type: grass  
TDZ-Elev: 275 ft

Runway: 19L  
Length x Width: 3281 ft x 82 ft  
Surface Type: asphalt  
TDZ-Elev: 276 ft  
Lighting: Edge

Runway: 19R  
Length x Width: 2674 ft x 135 ft  
Surface Type: grass

TDZ-Elev: 275 ft

Runway: 34

Length x Width: 1788 ft x 98 ft

Surface Type: grass

TDZ-Elev: 275 ft

## Communication Information

Vrsac Tower 118.6 VHF-DF

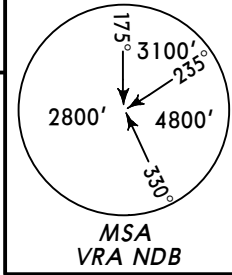
Vrsac Approach Control 127.05 VHF-DF

Vrsac Approach Control 122.175 Secondary VHF-DF

Vrsac Information 123.5 AFIS

Apt Elev  
276'

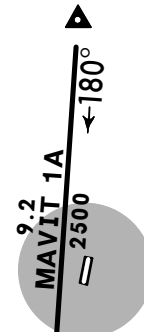
Alt Set: hPa Trans level: By ATC Trans alt:10000'



DONIV 1M [DONI1M]  
MAVIT 1A [MAVI1A]  
RWYS 01R, 19L ARRIVALS



MAVIT  
N45 14.4 E021 18.5



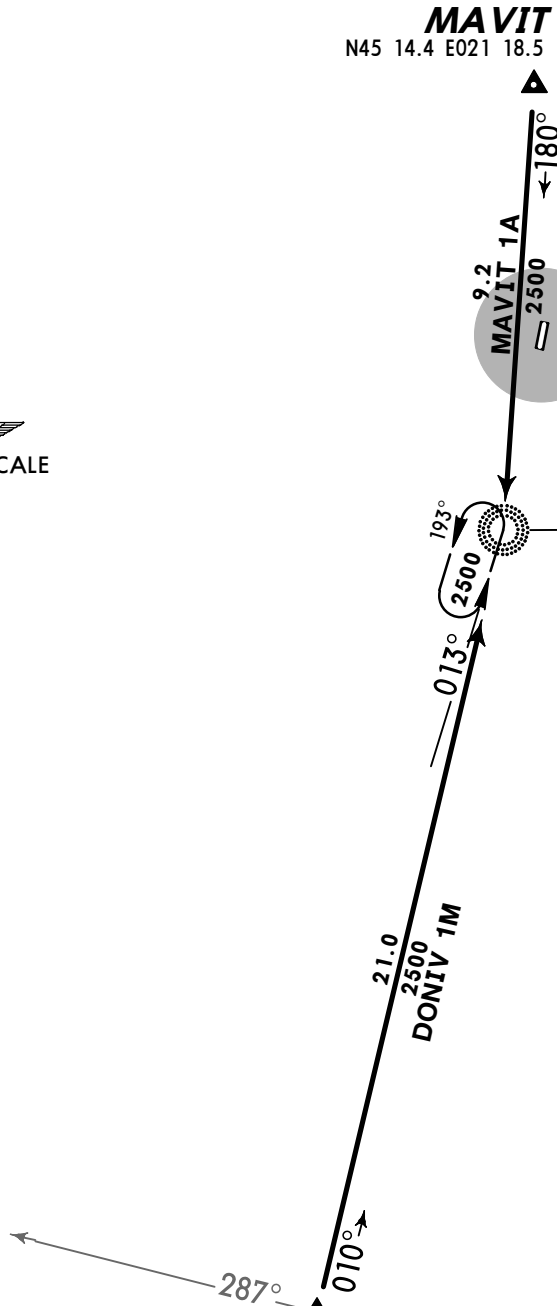
VRSAC  
294 VRA  
N45 05.3 E021 17.5

PANCEVO  
495 PA  
N44 53.5 E020 38.5



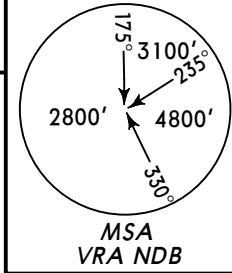
BELGRADE  
D  
(H) 112.3 BEO  
N44 48.4 E020 20.1

DONIV  
D36 BEO  
N44 44.9 E021 10.2

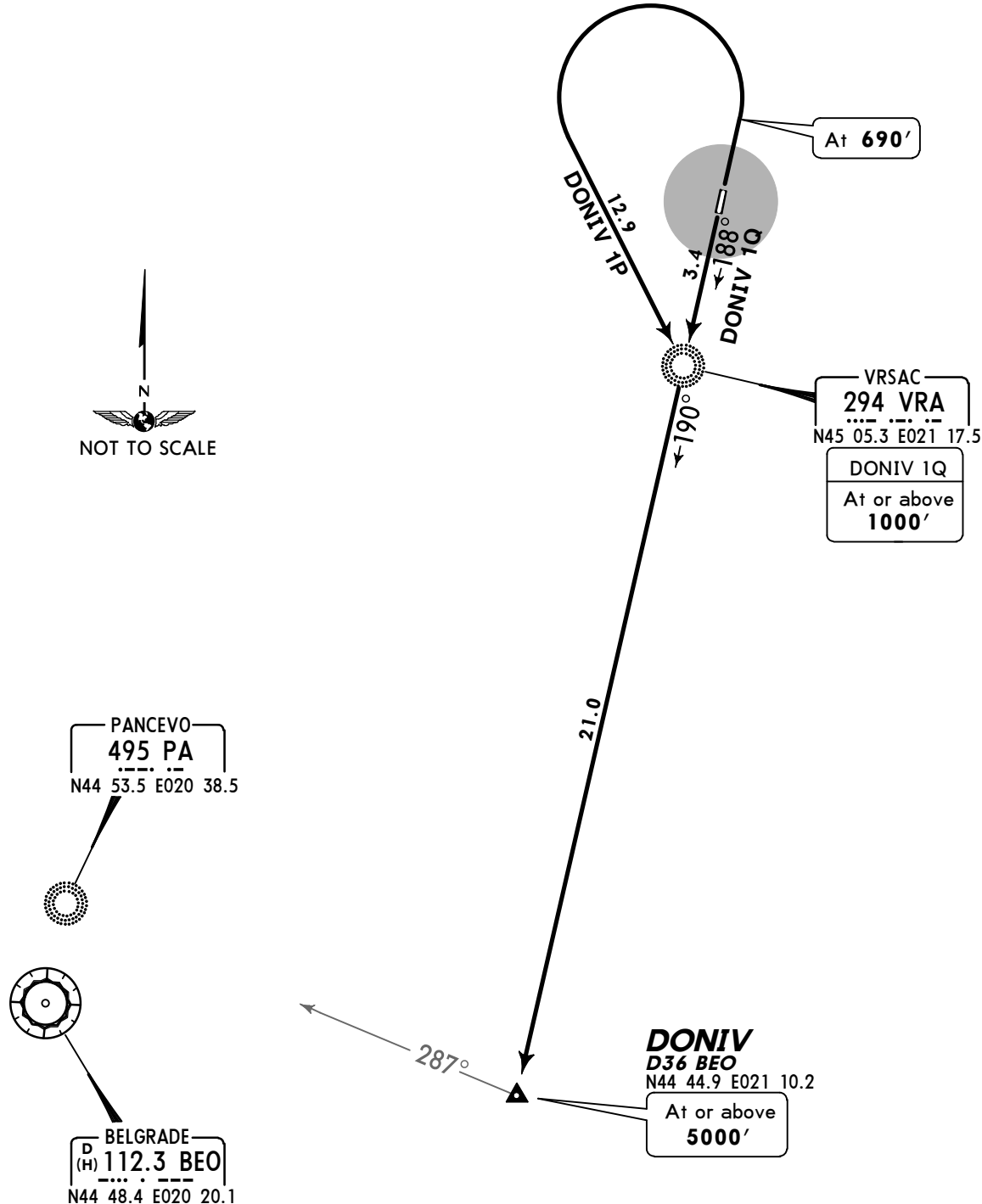


Apt Elev  
276'

Trans level: By ATC Trans alt: 10000'



**DONIV ONE PAPA (DONIV 1P) [DONI1P]  
DONIV ONE QUEBEC (DONIV 1Q) [DONI1Q]  
RWYS 01R, 19L DEPARTURES**



**DONIV  
D36 BEO**  
N44 44.9 E021 10.2  
At or above  
**5000'**

VRSAC  
**294 VRA**  
N45 05.3 E021 17.5  
**DONIV 1Q**  
At or above  
**1000'**

**PANCEVO  
495 PA**  
N44 53.5 E020 38.5

**BELGRADE  
112.3 BEO**  
N44 48.4 E020 20.1

**DONIV 1P**

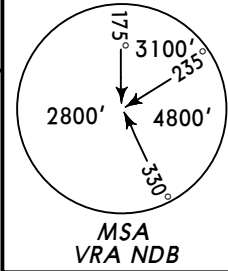
This SID requires a minimum climb gradient of 273' per NM (4.5%) up to 690'.

Gnd speed-KT	75	100	150	200	250	300
273' per NM	342	456	684	911	1139	1367

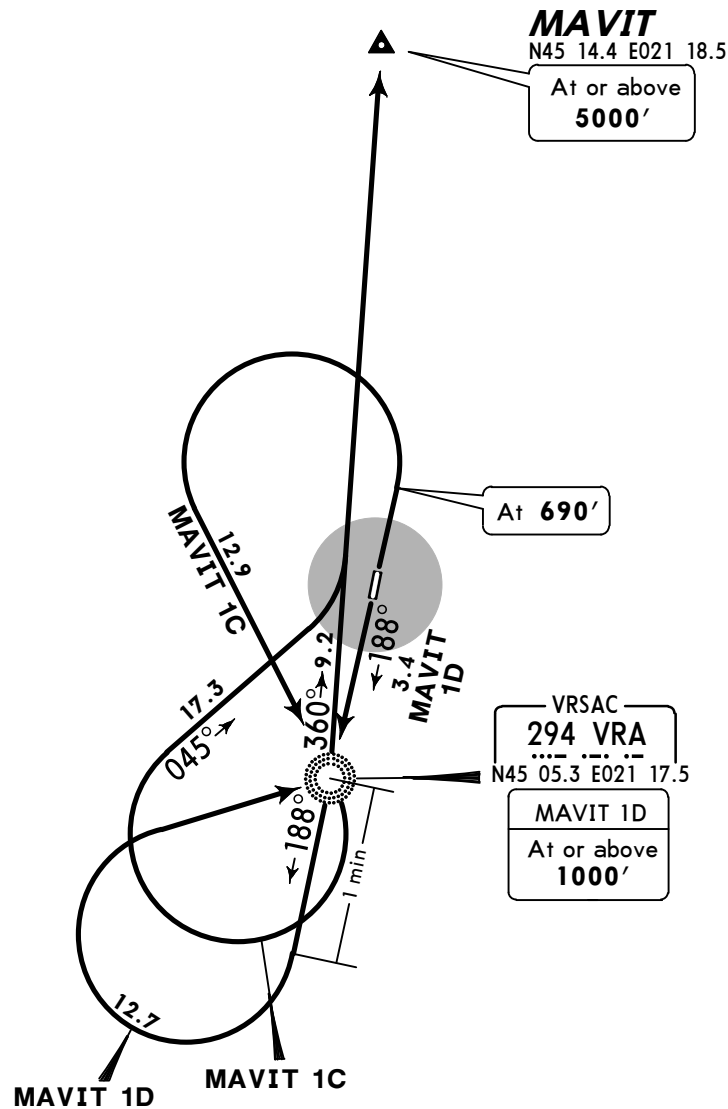
SID	RWY	ROUTING
<b>DONIV 1P</b>	<b>01R</b>	Climb to 690', turn LEFT to VRA, 190° bearing to DONIV.
<b>DONIV 1Q</b>	<b>19L</b>	Climb to VRA, 190° bearing to DONIV.

Apt Elev  
276'

Trans level: By ATC Trans alt: 10000'



MAVIT ONE CHARLIE (MAVIT 1C) [MAVI1C]  
MAVIT ONE DELTA (MAVIT 1D) [MAVI1D]  
RWYS 01R, 19L DEPARTURES



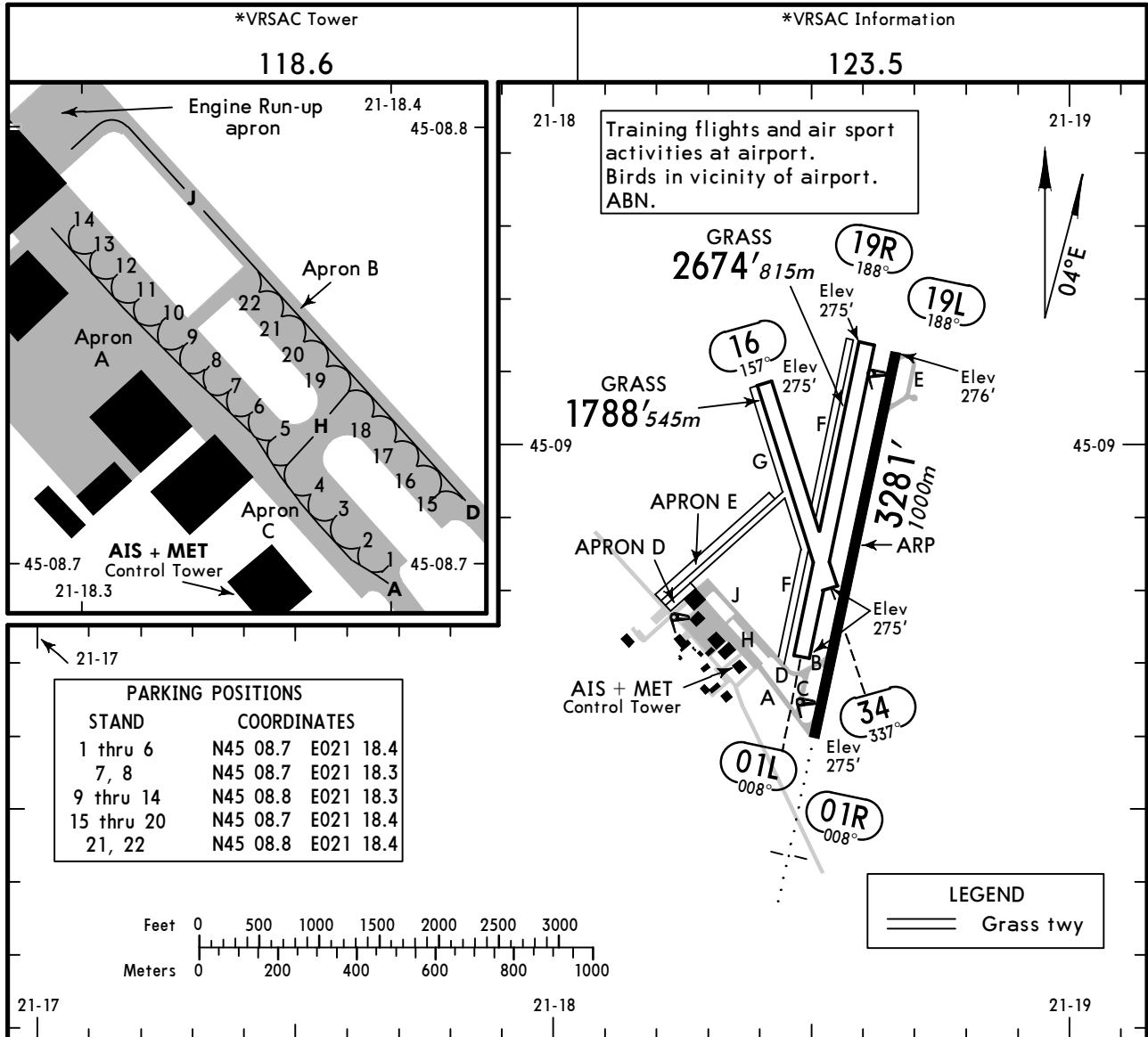
**MAVIT 1C**

This SID requires a minimum climb gradient of 273' per NM (4.5%) up to 690'.

Gnd speed-KT	75	100	150	200	250	300
273' per NM	342	456	684	911	1139	1367



SID	RWY	ROUTING
<b>MAVIT 1C</b>	<b>01R</b>	Climb to 690', turn LEFT to VRA, turn RIGHT, 045° track, intercept 360° bearing from VRA to MAVIT.
<b>MAVIT 1D</b>	<b>19L</b>	Climb to VRA, 188° bearing for 1 minute, turn RIGHT to VRA, turn LEFT, 360° bearing to MAVIT.

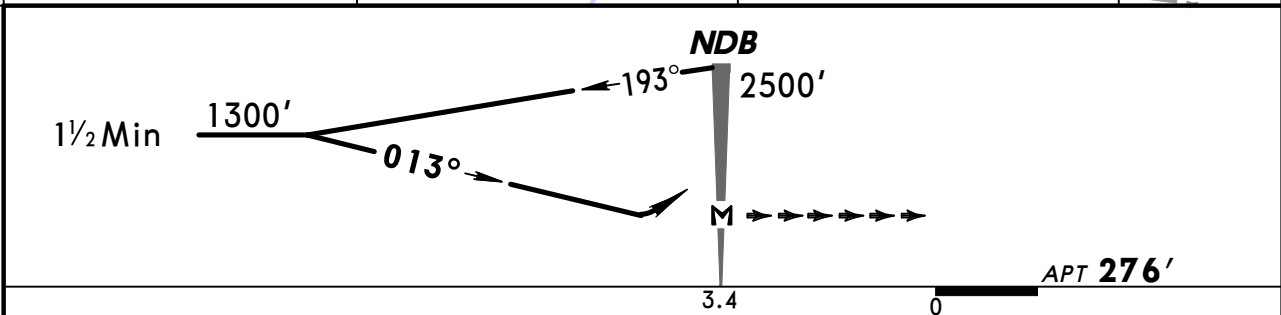
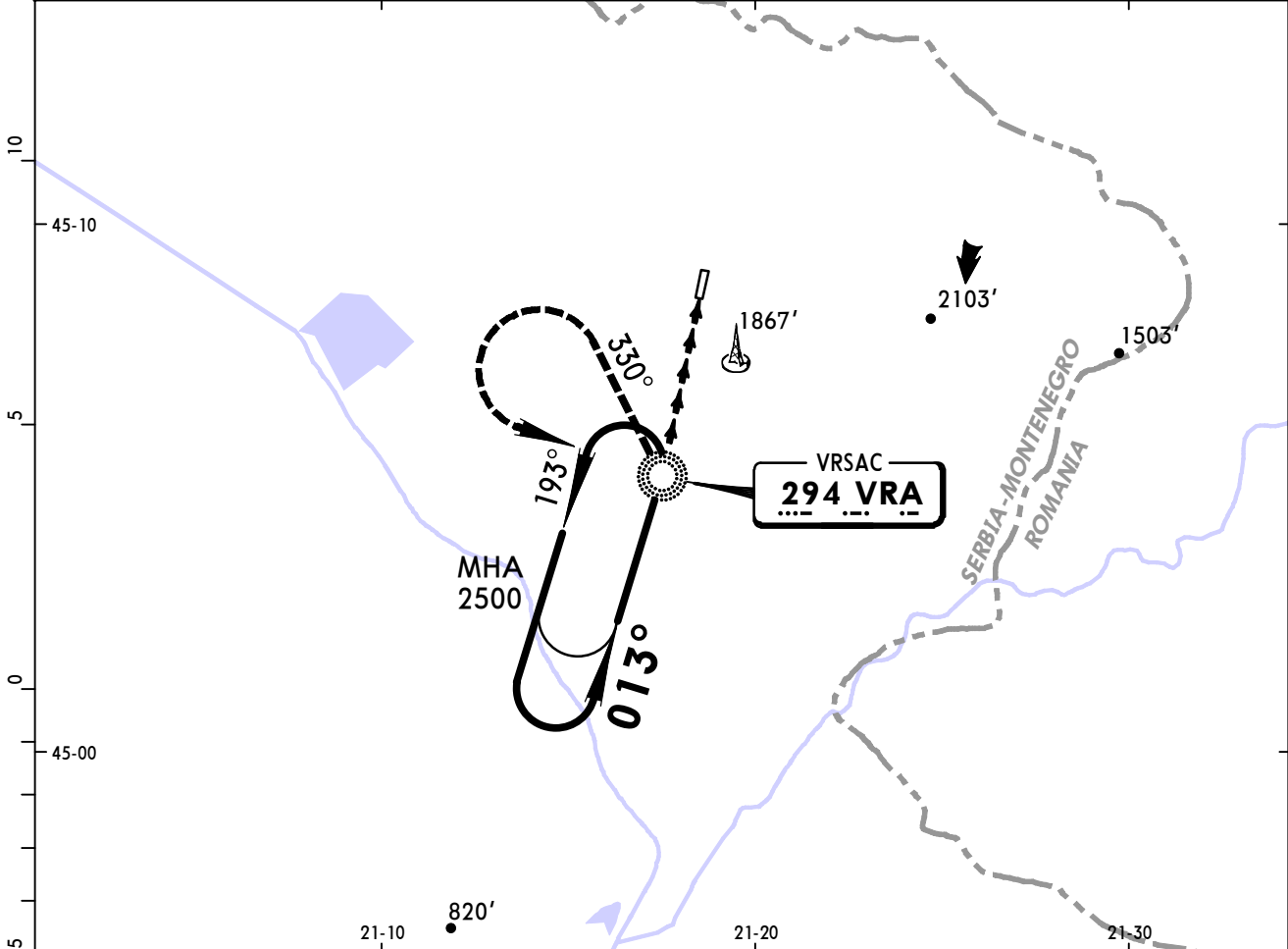


RWY	ALS	USABLE LENGTHS			WIDTH
		Threshold	Glide Slope	TAKE-OFF	
01R	RL (100m) ALS				82' 25m
19L	RL (100m)				
01L					135' 41m
16					98' 30m

Standard		TAKE-OFF 1	
<b>LVP must be in force</b>			
RCLM (DAY only) or RL		RCLM (DAY only) or RL	
A	250m	400m	NIL (DAY only) 500m
B			
C	NOT AUTHORIZED		
D	NOT AUTHORIZED		

**1** Operators applying U.S. Ops Specs: CL required below 300m.

*VRSAC Approach <b>127.05</b>		*VRSAC Tower <b>118.6</b>		*VRSAC Information <b>123.5</b>	
NDB VRA <b>294</b>	Final Apch Crs <b>013°</b>	Minimum Alt No FAF	MDA(H) <b>840' (564')</b>	Apt Elev <b>276'</b>	
<b>MISSED APCH: Turn LEFT (MAX 130 KT) onto 330° from NDB. At 1300' climbing turn LEFT to NDB to 2500' and hold.</b>					
Alt Set: hPa	Apt Elev: 10 hPa	Trans level: By ATC	Trans alt: 10000'	MSA VRA NDB	

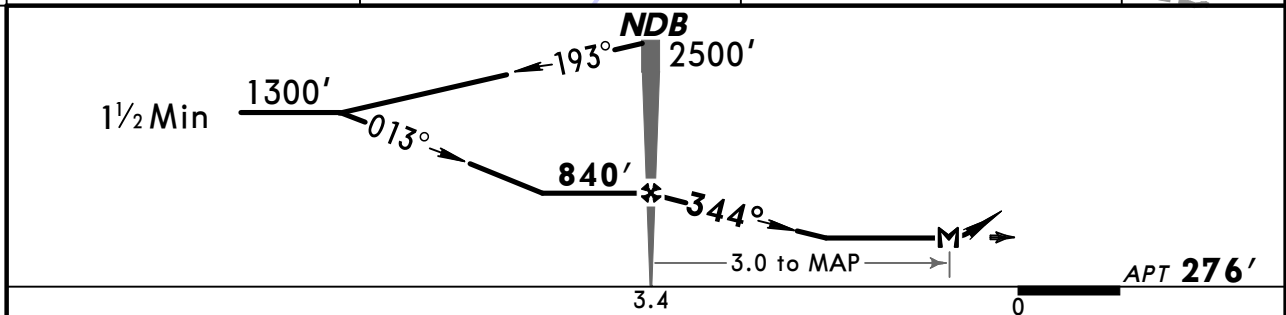
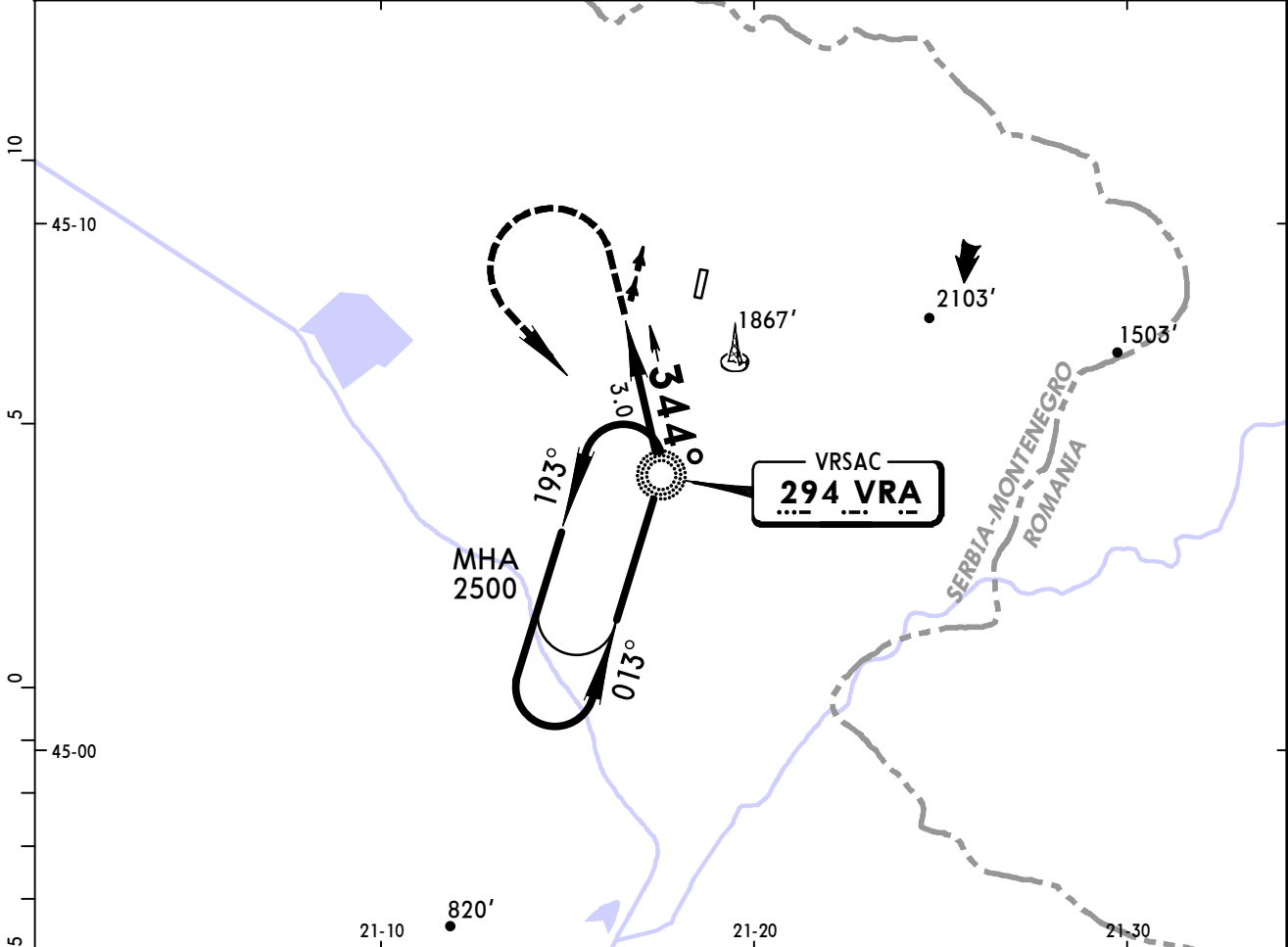


MAP at NDB					ALS	<b>130 KT</b> MAX	<b>330°</b> LT from VRA <b>294</b>
------------	--	--	--	--	-----	----------------------	---------------------------------------

<b>Standard</b> STRAIGHT-IN LANDING RWY 01R			CIRCLE-TO-LAND		
non-CDFA MDA(H) <b>840' (564')</b>			ALS out		
A	2600m	2800m	A	For Circle-to-land procedure with prescribed flight tracks see 19-10.	
B			B		
C	NOT AUTHORIZED		C	NOT AUTHORIZED	
D			D		

PANS OPS

*VRSAC Approach <b>127.05</b>		*VRSAC Tower <b>118.6</b>		*VRSAC Information <b>123.5</b>	
NDB VRA <b>294</b>	Final Apch Crs <b>344°</b>	Minimum Alt NDB <b>840' (564')</b>	MDA(H) Refer to Minimums	Apt Elev <b>276'</b>	
<b>MISSED APCH: Climb STRAIGHT AHEAD to 890', then climbing turn LEFT to NDB to 2500' and hold.</b>					
Alt Set: hPa	Apt Elev: 10 hPa	Trans level: By ATC	Trans alt: 10000'	MSA VRA NDB	



Gnd speed-Kts	70	90	100	120	140	160	<b>890'</b> ↑	
Descent angle	3.21°	398	511	568	682	795		909
NDB to MAP	3.0	2:34	2:00	1:48	1:30	1:17		1:08

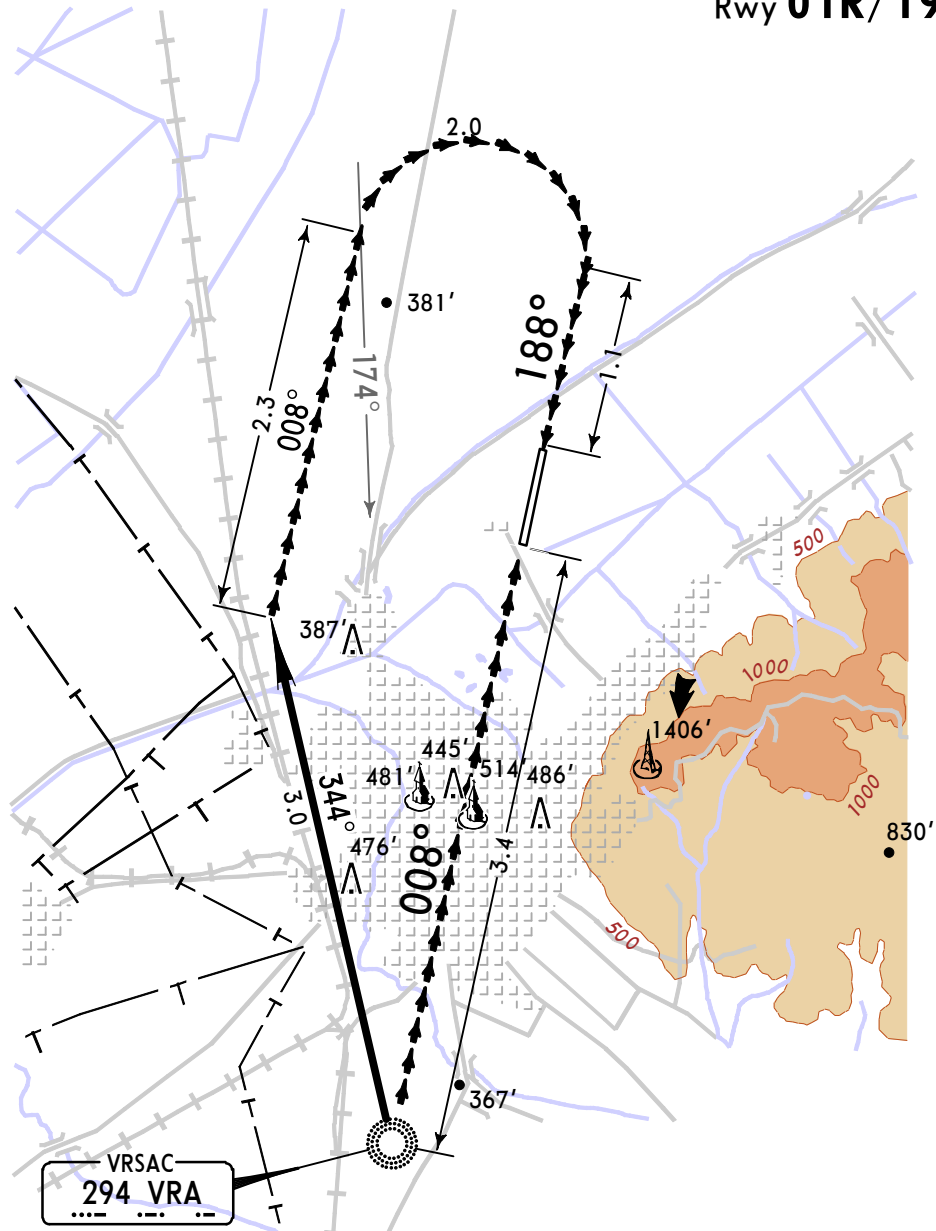
<b>Standard</b>		STRAIGHT-IN LANDING	CIRCLE-TO-LAND
			Missed apch climb gradient mim 3.1%
A	<b>NOT AUTHORIZED</b>		A
B			B
C			C
D			D
		For Circle-to-land procedure with prescribed flight tracks see 19-10.	NOT AUTHORIZED

PANS OPS



CIRCLE-TO-LAND  
WITH PRESCRIBED FLIGHT TRACKS

Rwy 01R/19L



**MISSED APPROACH:**

If visual reference is lost, initial climbing turn toward the landing runway should be made. Overhead airport proceed climbing to NDB and as directed.

**Standard**

	Max Kts.	MDA(H)	VIS
A	100	790' (514') <b>I</b>	1500m
B	135	790' (514') <b>I</b>	1600m
C		NOT AUTHORIZED	
D			

PANS OPS

**I** After NDB apch rwy 01R: MDA(H) 840' (564').

CHANGES: None.